



Tewkesbury Park

01684 293246

**Engall
Castle
.com**

60 Battle Road, Tewkesbury Park, Tewkesbury, GL20 5TZ

Located within the popular area of Tewkesbury Park this is a beautifully presented, extended semi detached home which has the advantage of a larger than average corner plot garden.

A welcoming hallway greets you as you enter the home and to the left there is a lounge with attractive circular windows creating light and character to the room. An archway leads through to a further reception room, perfect as an additional living/dining room and which has the benefit of patio doors leading out to the garden.

To the right of the hall is a useful utility room and a ground floor wc. Adjacent is the kitchen/breakfast room which is positioned at the front of the property. The kitchen is fitted with a range of modern wall and base units with an integrated dishwasher, electric oven and gas hob with extractor over.

Completing the accommodation on the ground floor is a utility room and ground floor wc.

On the first floor there are three bedrooms and main bathroom. Both double bedrooms benefit from fitted wardrobes and the bathroom is fitted with a white suite comprising of a panel bath, pedestal wash basin and low level wc.



Outside the rear garden is larger than average being on a corner plot. It benefits from a large patio and lawn with gated access to the front of the house where there is ample driveway parking.

The garage is now a store accessed via the front garage door with the advantage of power and light.

Tewkesbury Park is a popular, established residential area of Tewkesbury being within easy walking distance of the town centre and local supermarket. The town itself has a wide range of excellent facilities including Hospital, The Roses Theatre, shops, sports and leisure centres and schools.

Centrally situated between Cheltenham, Worcester, Gloucester and Evesham it is an excellent commuting base, with Birmingham and other major cities made easy with the motorway and rail networks readily accessible.

Approx distances: Cheltenham (10 miles), Worcester (18 miles), Gloucester (11 miles) M5 J9 (1.5 miles) Ashchurch Station (2 miles)



Ground Floor

Lounge	16'4"x11'10"
Dining room	15'7"x9'"
Kitchen	11'8"x8'2"
Utility Room	7'10"x11'4"max
WC	

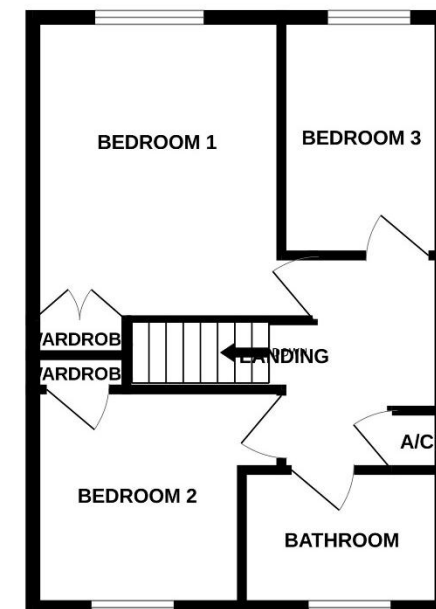
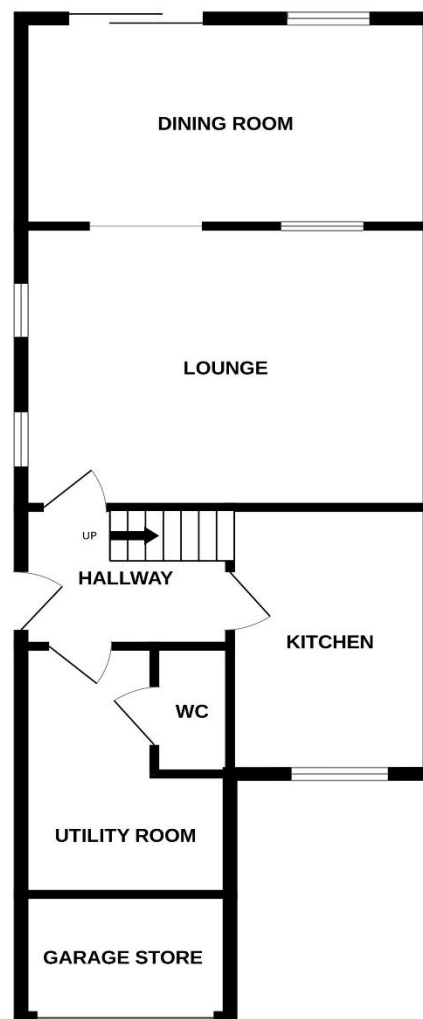
First Floor

Bedroom 1	12'2"x9'8"
Bedroom 2	11'3"x8'9"
Bedroom 3	9'2"x6'4"
Bathroom	6'8"x5'4"

Outside

Garage store	7'10"x5'1"
--------------	------------

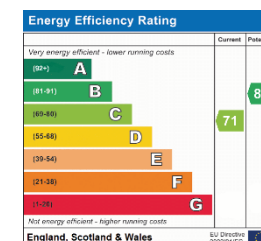
Tewkesbury Borough Council Tax Band C



Guide Price £325,000 Freehold

Viewing strictly by arrangement with Engall Castle Ltd
155 High Street Tewkesbury Gloucestershire GL20 5JP
Office hours: Mon – Fri 9am to 5.30pm, Sat 9am to 2pm
email: sales@engallcastle.com

01684 293 246
www.engallcastle.com



This floorplan is provided for guidance only as an approximate layout of the property and should not be relied upon as a statement of fact.

Agents Note

These property details are set out as a general outline only and do not constitute any part of an Offer or Contract. Any services equipment, fittings or central heating systems have not been tested and no warranty is given or implied by Engall Castle Ltd that these are in working order. Buyers are advised to obtain verification from their solicitor or surveyor. Fixtures and fittings or other items are not included unless specifically described. All measurements, distances and areas are approximate and for guidance only and should not be relied upon for the purposes of fitting carpets or furniture etc. These property details and all statements within this document are provided without responsibility on behalf of Engall Castle Ltd or its employees or representatives and should not be relied upon as statements of fact. Prospective purchasers must satisfy themselves as to the accuracy of all details pertaining to the property.

