

## 17 Bessemer Place, North Greenwich, London, SE10 0GP

£1,475 PCM

**\*Pay less upfront with a Zero Deposit Guarantee\*** A modern one bedroom contemporary apartment boasting an outstanding specification. Situated in the 6th floor of the new Bellway Homes development this apartment is elegant and beautifully finished throughout with an unrestricted Thames view from private balcony. Located moments from the O2 Arena with it's host of restaurants and bars. Further boasts concierge service, on site gym and excellent transport links. Available from the 10th July.

Viewing by appointment with 1st avenue.

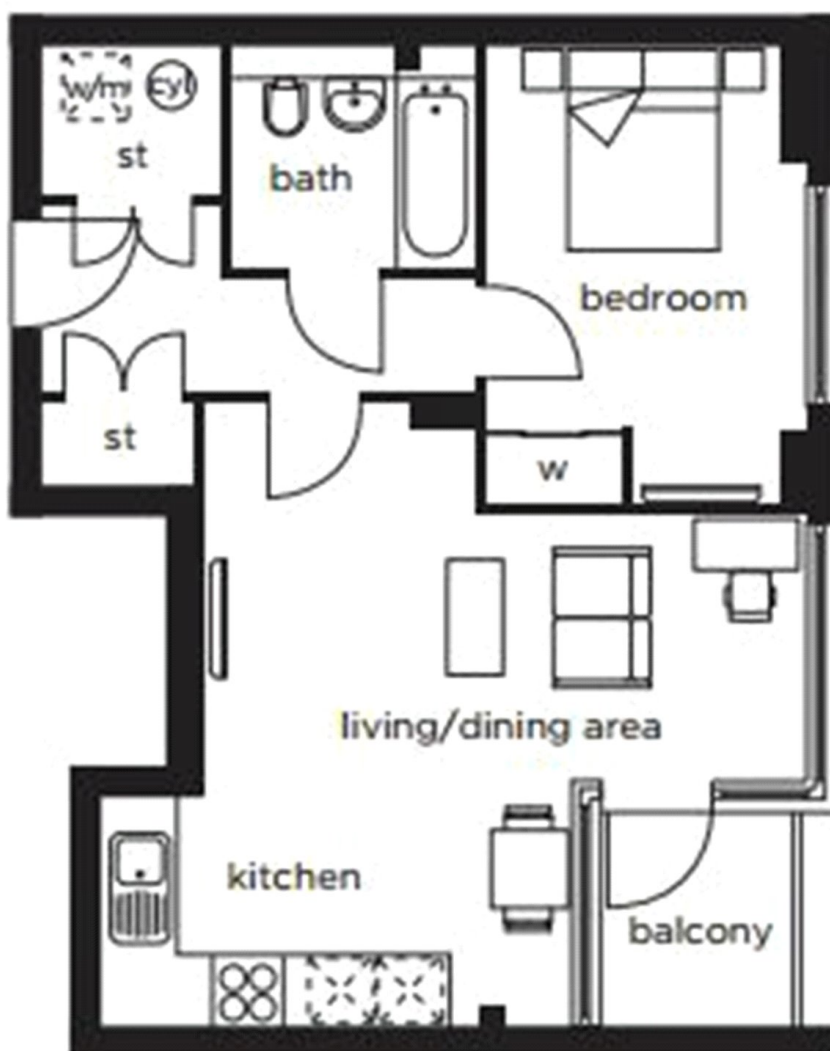
**Call: 020 8293 8600**

1st avenue, 128 Metcalfe Court, West Parkside, London SE10 0EL  
email: [info@1stavenue.co.uk](mailto:info@1stavenue.co.uk)

# 17 Bessemer Place, North Greenwich, London, SE10 0GP

**1stavenue**  
Real Estate Services

<b>KITCHEN AREA</b>	3.200m x 2.100m	10'6" x 6'10"
<b>LIVING/DINING AREA</b>	5.400m x 3.500m (max)	17'8" x 11'6" (max)
<b>BEDROOM</b>	4.100m x 2.825m	13'6" x 9'3"



Viewing by appointment with 1st avenue.

**Call: 020 8293 8600**

1st avenue, 128 Metcalfe Court, West Parkside, London SE10 0EL  
email: [info@1stavenue.co.uk](mailto:info@1stavenue.co.uk)

**1stavenue**  
Real Estate Services