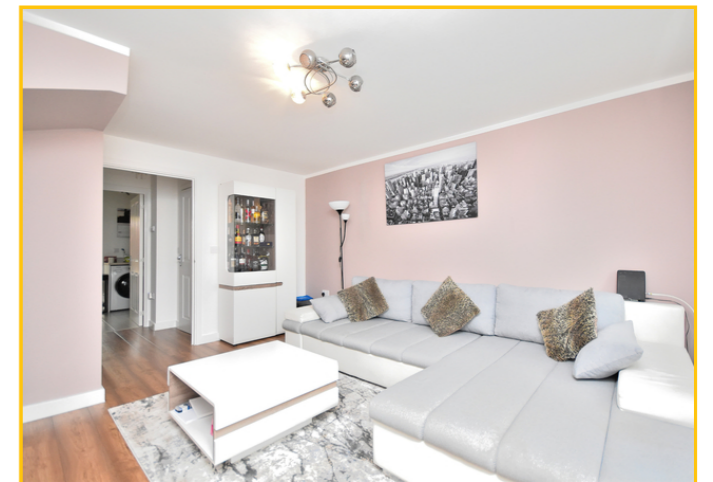


Make the right move!



TOTAL FLOOR AREA: 981 sq.ft. (91.1 sq.m.) approx.  
 Whilst every attempt has been made to ensure the accuracy of the floorplan contained here, measurements of doors, windows, rooms and any other items are approximate and no responsibility is taken for any error, omission or mis-statement. This plan is for illustrative purposes only and should be used as such by any prospective purchaser. The services, systems and appliances shown have not been tested and no guarantee as to their operability or efficiency can be given.  
 Made with Metropix ©2020



**8 Wildfell Walk, Weedon Road, Northampton.  
 NN5 4FZ.**

**£324,995 Freehold**

A stylish and contemporary four-bedroom, three-storey terraced home built in 2017, situated on the well-regarded St Crispin development.

Presented in immaculate condition throughout, this house offers modern family living with flexible space over three floors. The ground floor features a spacious living room, downstairs W/C and a kitchen/diner to the rear — perfect for everyday life and entertaining. The first floor includes two double bedrooms and a family bathroom, while the third floor boasts a generous master suite with en-suite shower room and Juliet balcony, plus a fourth bedroom.

**PROPERTY MISDESCRIPTIONS ACT 1991**  
 The Agents have not tested any apparatus, equipment, fixtures and fittings, or services, so cannot verify that they are in working order or fit for purpose. The buyer is advised to obtain verification from his or her Professional Buyer. References to the Tenure of the property are based on information supplied by the Vendor. The Agents have not had sight of the title documents. The buyer is advised to obtain verification from their Solicitor. You are advised to check the availability of any property before travelling any distance to view.

**Living Room**

11' 10" x 14' 6" (3.61m x 4.42m)

Comprising of; Hard laminate flooring. Radiator. UPVC double glazed window to the front aspect. Storage cupboard.

**Kitchen/Diner**

11' 9" x 8' 9" (3.58m x 2.67m)

Comprising of; Hard laminate flooring. Radiator. UPVC double glazed window to the rear aspect. Space and plumbing for washing machine. Base level and eye level kitchen units. Space for freestanding fridge/freezer. Sink and draining board with mixer tap over. Electric oven and hob with extractor fan over.

**W/C**

7' 6" x 4' 4" (2.29m x 1.32m)

Comprising of; W/C, hand wash basin with mixer tap. Radiator.

**Bedroom Two**

11' 9" x 10' 3" (3.58m x 3.12m)

Comprising of; Laminate flooring. Radiator. UPVC double glazed French doors leading to Juliette balcony.

**Bedroom Three**

11' 10" x 8' 10" (3.61m x 2.69m)

Comprising of; Laminate flooring. Radiator. UPVC double glazed window to the rear aspect.

**Family Bathroom**

5' 6" x 7' 11" (1.68m x 2.41m)

Comprising of; Laminate flooring. Bath with shower over. Hand wash basin with pedestal. W.C.

**Bedroom One**

11' 10" x 10' 8" (3.61m x 3.25m)

Comprising of; Laminate flooring. Radiator. UPVC double glazed French doors leading to Juliette balcony.

**Ensuite to Master**

5' 6" x 7' 6" (1.68m x 2.29m)

Comprising of; Laminate flooring. Shower cubicle with shower over. Hand wash basin. Heated towel rail. W/C.

**Bedroom Four**

12' 0" x 8' 10" (3.66m x 2.69m)

Comprising of; Laminate flooring. UPVC double glazed window to the rear aspect. Radiator.

