

2 Bedroom(s), Detached Bungalow, Freehold

Fernbank Close, Blaxton, Doncaster.



- 3D Virtual Tour Available
- Two Bedroom Detached Bungalow
- Lounge Diner
- Driveway and Garage
- Popular Location

- No Chain
- Modern Kitchen
- Wet Room
- Rear Garden
- Local Amenities, Schools and Transport Links

£270,000
For Sale

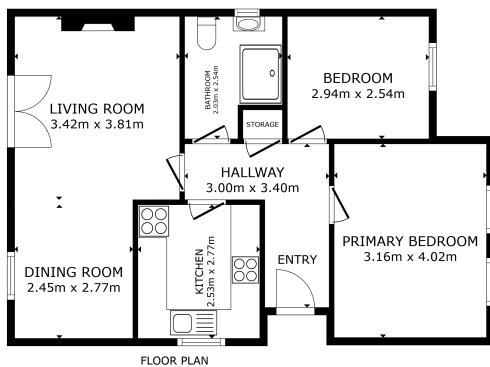
Book your viewing today Tel: 01302 247754

Owner's View

This detached two-bedroom bungalow on Fernbank Close offers comfortable single-level living in a peaceful cul-de-sac setting. The property features a spacious lounge diner, a modern fitted kitchen, and a wet room. Outside, there are well-maintained front and rear gardens, a driveway providing ample off-road parking, and a detached garage. The home is offered with no onward chain, making it an ideal opportunity for those looking to move straight in. Located close to local amenities, transport links, and countryside walks, this well-presented bungalow combines convenience with a quiet village lifestyle, perfect for downsizers or those seeking a relaxed pace of living.

Internals

Floor Plan



GROSS INTERNAL AREA
BUNGALOW: 81.2 sq m
EXCLUDED AREA: 10.0 sq m
TOTAL: 91.2 sq m
SIZES AND DIMENSIONS ARE APPROXIMATE, ACTUAL MAY VARY.

Matterport

Kitchen



Lounge Diner



Master Bedroom



Bedroom



Bathroom



Externals

Front Aspect



Rear Garden



Property Information

Council Tax Band - C

Utilities - Mains Gas, Mains Electricity, Mains Water

Water Meter - Yes

Tenure - Freehold

Solar Panels - No

Space Heating System - Gas Boiler with radiators



Approximate Heating System Installation Date -

Water Heating System - Gas boiler (Combi)

Approximate Water Heating Installation Date -

Boiler Location - Kitchen

Approximate Electrical System Installation Date -

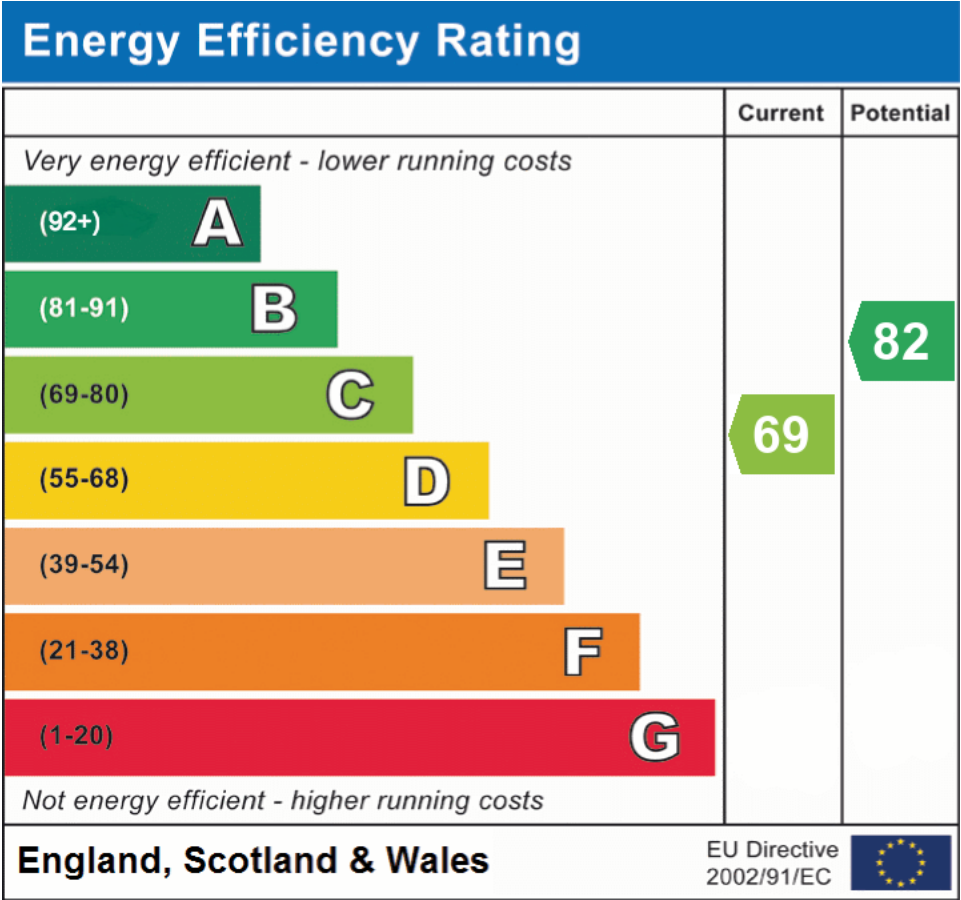
Permanent Loft Ladder - No

Loft Insulation - Yes

Loft Boarded out – No

Whilst every effort is made to ensure that the information contained in these particulars is reliable, they do not constitute or form part of an offer or any contract. The Property Hive accept no liability for the accuracy of the contents, and therefore they should be independently verified by prospective buyers or tenants before agreeing an offer. All measurements provided are approximate and should be verified before exchange of contracts. No appliances, fixtures or fittings have been tested and should be checked by the buyer before exchange of contracts to ensure they are in good working order.

Energy Performance Certificate



All measurements provided are approximate and should be verified before exchange of contracts. No appliances have been tested and should be checked to ensure they are in good working order.