

16 The Bayle

Folkestone
CT20 1SQ

£275,000 FREEHOLD

FOR SALE WITH BURNAP + ABEL... Welcome to this charming 2 bed terraced cottage nestled in the picturesque location of The Bayle, Folkestone. As you step inside, you are greeted by a cozy lounge complete with a traditional log burner, perfect for those chilly evenings. The kitchen offers all the amenities you need to whip up delicious meals and leads out to a spacious garden, ideal for hosting gatherings or simply relaxing in the sun. Upstairs, you will find two bedrooms offering tranquil retreats from the hustle and bustle of daily life. The recently renewed family bathroom boasts a luxurious roll top bath where you can unwind and relax after a long day. From the top bedroom, stunning sea views can be enjoyed, adding an extra touch of tranquility to this already enchanting home. With its prime location in The Bayle and close proximity to local amenities, this property is truly a gem not to be missed. Don't let this opportunity slip away - schedule your viewing today!



Lounge

15' 1" x 9' 11" (4.60m x 3.02m)

Kitchen

9' 7" x 5' 3" (2.92m x 1.60m)

Utility Area

Bedroom One

12' 5" x 9' 11" (3.78m x 3.02m)

Bathroom

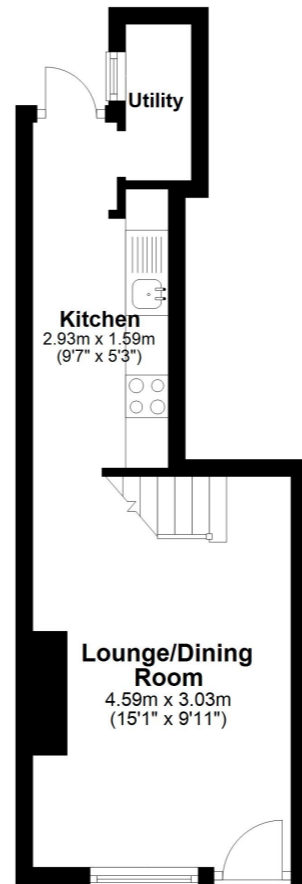
Bedroom Two

12' 0" x 8' 9" (3.66m x 2.67m)

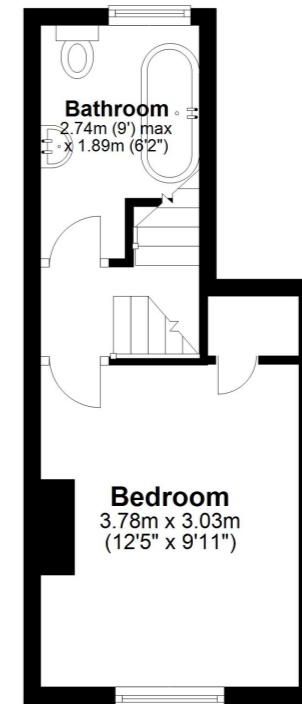
Rear Garden

Please be aware the garden is on a lease of 66 years.

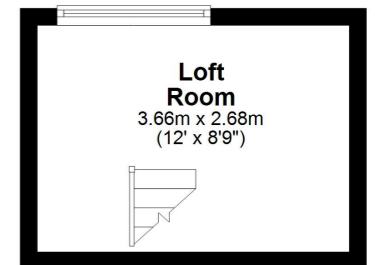
Ground Floor
Approx. 21.6 sq. metres (232.5 sq. feet)



First Floor
Approx. 19.9 sq. metres (213.8 sq. feet)



Second Floor
Approx. 9.8 sq. metres (105.0 sq. feet)



Whilst every attempt has been made to ensure the accuracy of the floor plan contained here, measurements of doors, windows, rooms and any other items are approximate and no responsibility is taken for any error, omission or mis-statement. This plan is for illustrative purposes only and should be used as such by any prospective purchaser.
Plan produced using PlanUp.

