



21 Heathfield Park

Widnes, WA8 9WY



0151 424 5100
info@mylerestates.com



Heathfield Park

Widnes, WA8 9WY

Offers Over £360,000

This four-bedroom detached house is now up for sale and is in a good condition. The property boasts two reception rooms and a single kitchen. Of the four bedrooms, the master suite includes an en-suite. The other three bedrooms consist of two doubles and a single, providing ample space for a family.

The house is situated in a sought-after location with an abundance of local amenities. These include public transport links, nearby schools, green spaces, and walking routes. For outdoor enthusiasts, the close proximity to nearby parks is a definite plus.

One of the key features of this house is the fireplace, adding a cosy touch to the home. The property also benefits from having its own parking and a beautiful garden, ideal for family activities or a quiet afternoon in the sunshine.

If you are looking for a property that is perfect for families and offers a comfortable lifestyle, then this house could be just what you are looking for. With its unique features and prime location, this property offers a great opportunity for those looking to settle down in a warm and friendly community.

In summary, this four-bedroom home offers comfort, functionality and a great location. From the unique features such as the fireplace and garden to its favourable location near schools and parks, this property promises to be the perfect family home. We encourage interested parties to arrange a viewing to fully appreciate what this property has to offer.



MYLER&Co



MYLER&Co



Ground Floor

Hallway

Downstairs WC

Lounge

4.60m x 4.35m (15' 1" x 14' 3")

Dining Room

3.60m x 2.65m (11' 10" x 8' 8")

Kitchen

5.10m x 2.65m (16' 9" x 8' 8")

First Floor

Bedroom One

3.75m x 4.60m (12' 4" x 15' 1")

En-suite

Bedroom Two

3.85m x 2.70m (12' 8" x 8' 10")

Bedroom Three

3.60m x 2.45m (11' 10" x 8' 0")

Bedroom Four

2.70m x 2.15m (8' 10" x 7' 1")

Bathroom

Externals

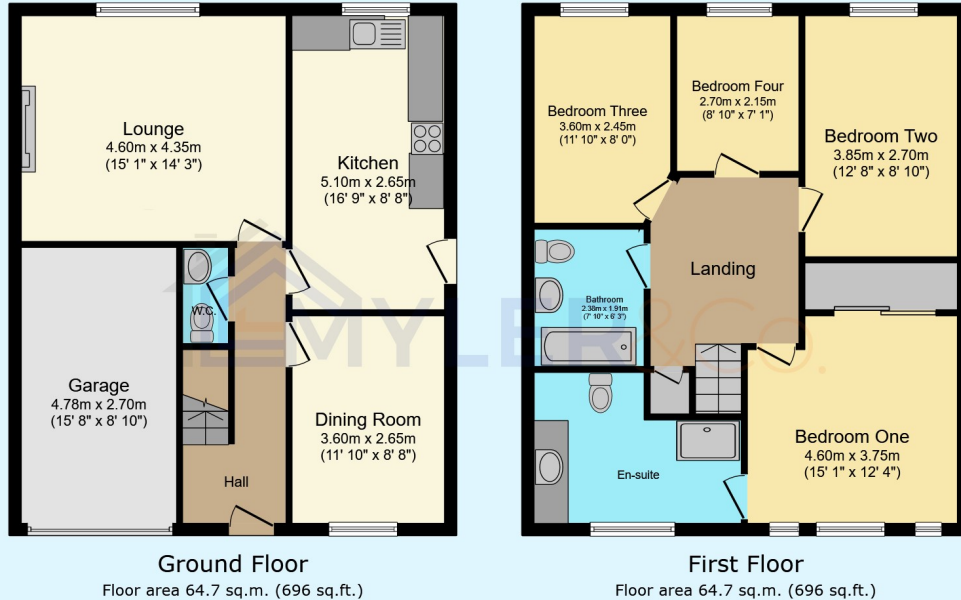
Garage

Driveway

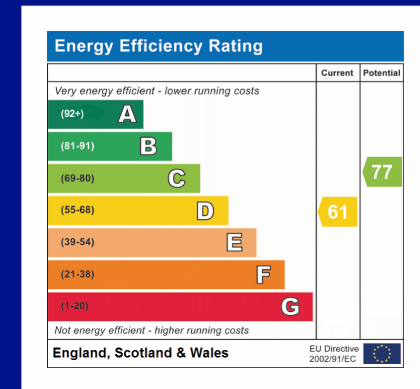
Rear Garden



21 Heathfield Park, Widnes, WA8 9WY



This floor plan is for illustrative purposes only. It is not drawn to scale. Any measurements, floor areas (including any total floor area), openings and orientations are approximate. No details are guaranteed, they cannot be relied upon for any purpose and do not form any part of any agreement. No liability is taken for any error, omission or misstatement. A party must rely upon its own inspection(s). Powered by www.Propertybox.io



Myler & Co
 77, Albert Road, Widnes, Cheshire, WA8 6JS
 0151 424 5100
info@mylerestates.com