



35/10 Ocean Drive, The Shore, Edinburgh, EH6 6JL

Beautifully Presented and Spacious, Three-Bedroom, Fourth-Floor, Dual-Aspect Apartment

Up to date price and viewing info at mov8realestate.com/property

espc rightmove  Zoopla
find your happy

Property Description

Beautifully presented and spacious, three-bedroom, dual-aspect, fourth-floor apartment with superb views over Leith Docks and to the Forth. Part of a modern, factored, residential development, located close to the tram stop, in Leith's fashionable Shore district, lying to the north-east of Edinburgh city centre.

Comprises an entrance hallway, an open plan living/dining room and kitchen, with a balcony, three double bedrooms, an en-suite shower room and a family bathroom.

Highlights include a high-quality fitted kitchen, quartz worktops, extensive engineered wood flooring and modern fitted bathroom suites. In addition, there is double glazing, gas central heating, generous room sizes and good integrated storage. This factored development also provides an allocated parking space in a secure underground car park.

Further benefits include a lift service, a secure video entry and a communal courtyard.

A welcoming entrance hall, with storage, is finished with light, neutral decor and engineered wood flooring, which continues into a spacious, open-plan room. Fronted by a private balcony, with views over Leith Docks, the versatile floor plan offers space for both lounge and dining furniture and flows openly into a kitchen, fitted with modern grey units and quartz worktops. Appliances include an integrated double oven, an induction hob, a canopy and a dishwasher, whilst space is available for a fridge/freezer and a washing machine.

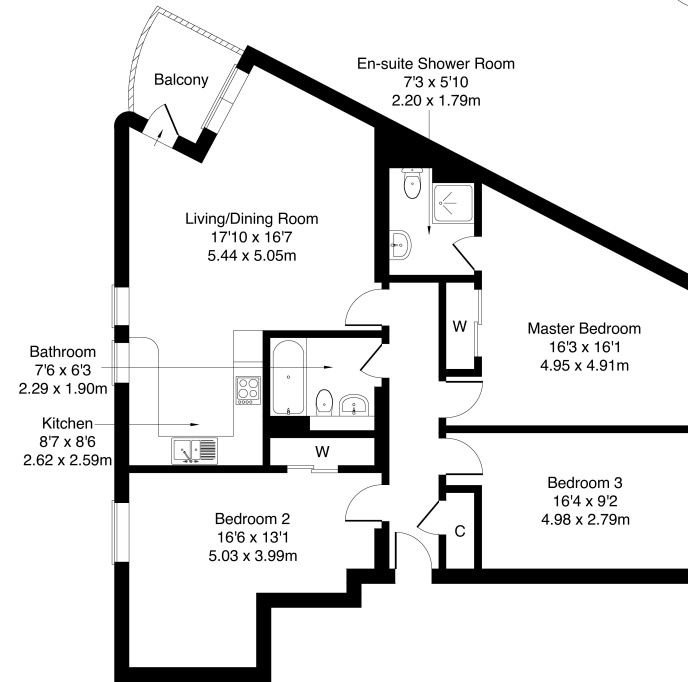
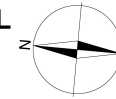
Three carpeted double bedrooms provide well-proportioned, flexible spaces, with the master bedroom further benefiting from integrated wardrobe storage and an en-suite shower room.

Completing the accommodation, a good-sized bathroom comprises a three-piece suite, a shower-over-bath, and tiled splash walls.



35/10 Ocean Drive, Edinburgh, EH6 6JL

Approximate Gross Internal Area: (1087 sq ft - 101 sq m.)



Fourth Floor

Legal Disclaimer : Floor-plan and measurements are for illustrative guidance only, and not intended to form part of any contract.

Area Description





The Shore is a fashionable and vibrant location north of Edinburgh city centre, offering a blend of historic buildings and modern developments, and is well-served by the area's unrivalled selection of local artisan shops and eateries, including several Michelin-starred restaurants. Extensive local shopping is available throughout Leith, with Great Junction Street and the foot of Leith Walk close by, with many supermarkets in close range. The area also benefits from weekly

markets, where local food stalls and independent retailers are showcased. Ocean Terminal retail and leisure complex offers a multi-screen cinema, a gym and a variety of restaurants. Walks and cycleways can be found along the Newhaven shore and the Water of Leith, whilst the extensive Leith Links park offers open green spaces. The area is well-served by transport links to the city centre and beyond, with the property just a few minutes walk from a tram stop.





Our Services

-  Free pre-sale property valuations
-  Great value fixed estate agency fees
-  Extensive buyer matching database
-  Purchase and sale conveyancing

Contact Us

0345 646 0208

sales@mov8realestate.com

www.mov8.com

Head Office

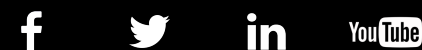
6 Redheughs Rigg, Edinburgh, EH12 9DQ

Glasgow Office

77 Renfrew Street, Glasgow, G2 3BZ



Estate Agents and Solicitors



These particulars do not form part of any contract and the statements or plans contained herein are not warranted nor are they to scale. All descriptions, dimensions, areas, reference to condition and necessary permissions for use and occupation and other details are given in good faith, and are believed to be correct, but any prospective purchaser should not rely on them as statements or representations of fact, and any prospective purchaser must satisfy themselves by inspection or otherwise as to the correctness of each of them. The Seller shall not be bound to accept the highest or any offer nor to accept a full offer of the Fixed Price where this is applicable. Approximate measurements have been taken by sonic device and measurements are most often taken to the widest point of any room or space. Services and appliances have not been tested for efficiency or safety and no warranty is given as to their compliance with any Regulations. Offers should be made using the Combined Standard Clauses.