



Hornbeam House, London, 22 Quebec Way SE16 7EW

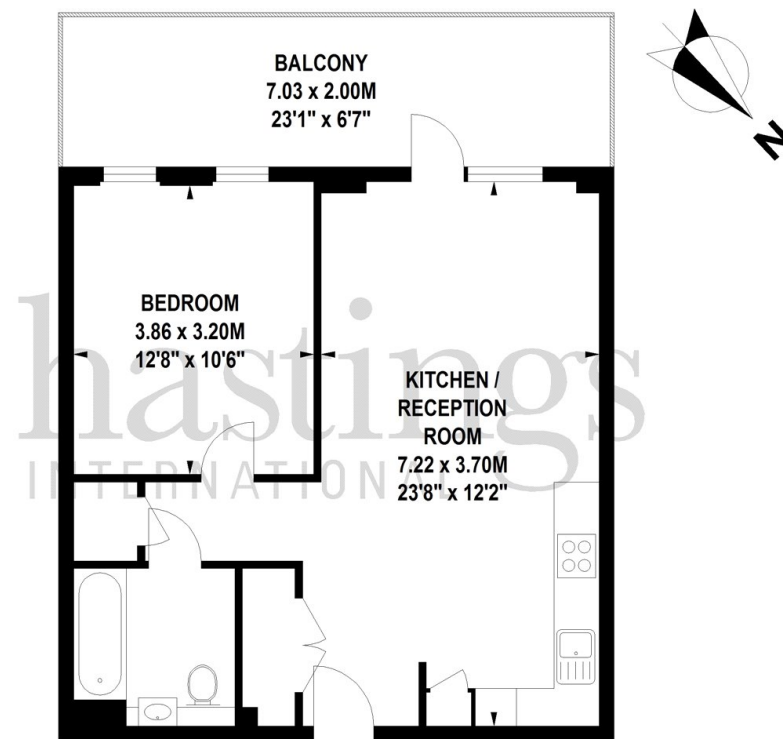
A beautifully presented first floor, one bedroom apartment with generous balcony and concierge facilities located within Quebec Quarter, a modern development located moments from Canada Water station [Jubilee Line & Overground], Surrey Quays shopping centre and Stave Hill Ecological Park.

Occupying part of the first floor of this stylish modern development, this well presented apartment comprises entrance area with storage/utility cupboard, impressive reception room with floor to ceiling windows, doors providing access to generous private balcony, dining area, stylish open plan fitted kitchen with stone work tops and integrated appliances, double bedroom with fitted wardrobes and bathroom. Residents of Hornbeam House have the benefit of access to landscaped communal gardens and concierge facilities. Secure allocated parking available under separate negotiation. Canada Water station [Jubilee & Overground] is moments away together with Surrey Quays shopping centre and Stave Hill Ecological Park.

- Hornbeam House SE16
- One Bedroom
- Private Balcony
- Concierge Facilities
- 545 Sq Ft
- Generous Reception Room
- Stylish Interior
- Parking Available Under Separate Negotiation

Hornbeam House, SE16

Approximate Gross Internal Area 50 sq.m / 538 sq.ft



First Floor

Illustration for identification purposes only, not to scale
All measurements are maximum, and includes wardrobes and window bays where applicable





Energy Efficiency Rating		
	Current	Potential
Very energy efficient - lower running costs		
(92+) A		
(81-91) B	86	86
(69-80) C		
(55-68) D		
(39-54) E		
(21-38) F		
(1-20) G		
Not energy efficient - higher running costs		
England, Scotland & Wales	EU Directive 2002/91/EC 