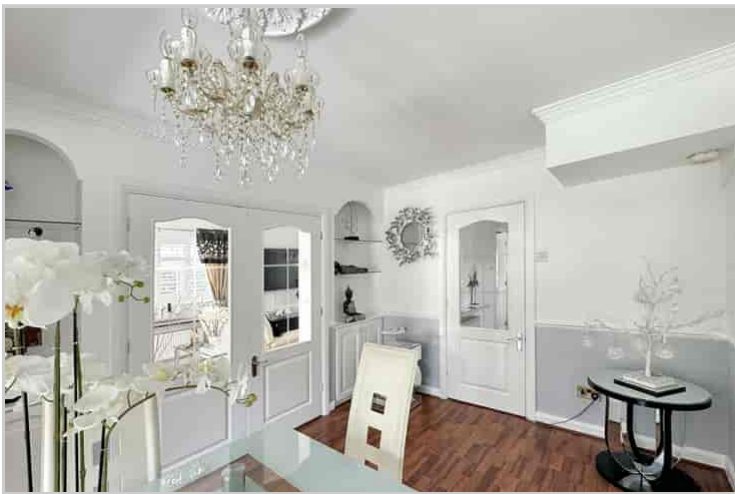


2 Lime Grove, Orpington, Kent, BR6 8LF

Property Images





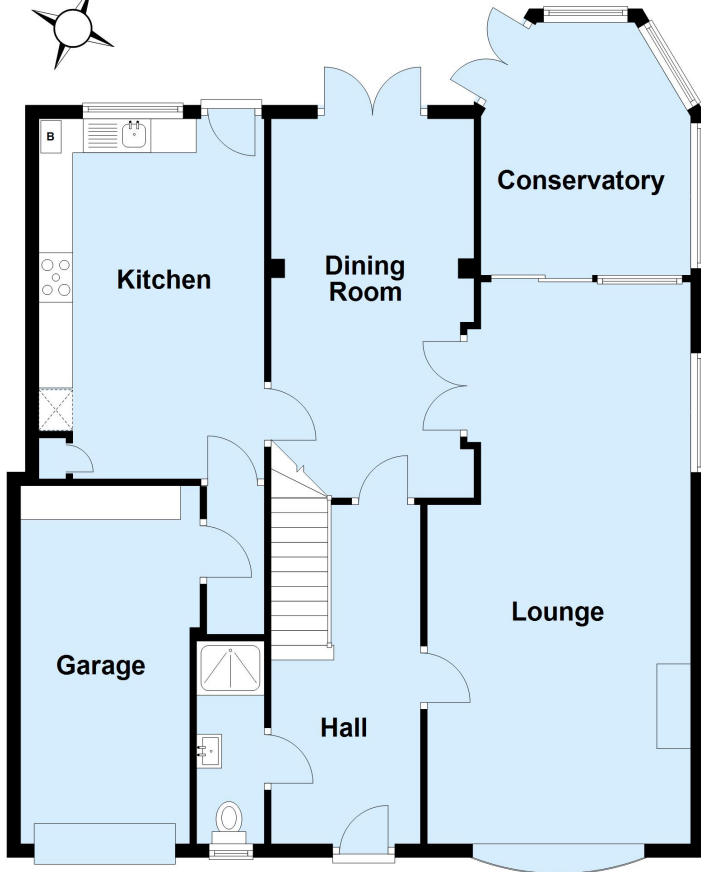






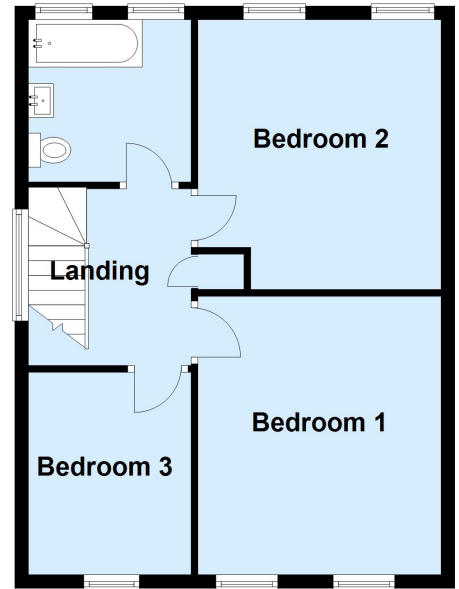
Ground Floor

Approx. 107.9 sq. metres (1161.4 sq. feet)



First Floor

Approx. 49.9 sq. metres (536.9 sq. feet)



Total area: approx. 157.8 sq. metres (1698.3 sq. feet)

This plan is for general layout guidance and may not be to scale.
Plan produced using PlanUp.