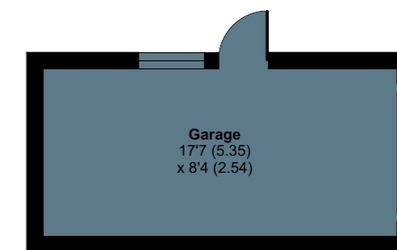
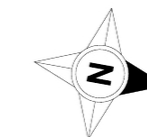
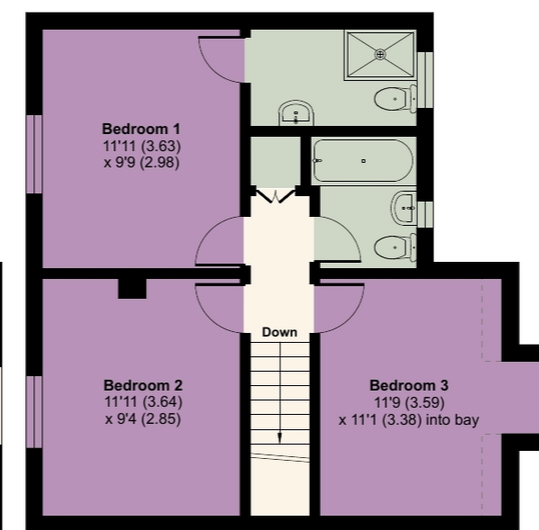
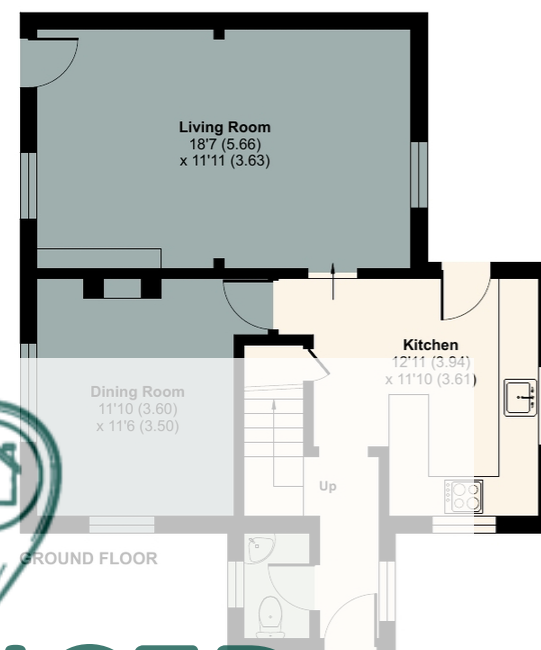




Total = 1218 sq ft / 113 sq m (includes garage)  
Approximate Area = 1072 sq ft / 99.5 sq m (includes limited use area)  
For identification only - Not to scale



Denotes restricted head height

# REDUCED

Floor plan produced in accordance with RICS Property Measurement 2nd Edition, Incorporating International Property Measurement Standards (IPMS2 Residential). © nichecom 2025. Produced for Country Properties. REF: 1283267

cp



3  
Bedrooms



2  
Bathrooms



2  
Receptions

**Bury Road SG5 3NU**  
**Offers In Excess of £480,000**

Tenure:  
Freehold

EPC:  
Band D

Council Tax:  
Band D

