

FOR SALE

£200,000 Share of Freehold



Spring Drive, Stevenage, Hertfordshire. SG2 8AZ

- CHAIN FREE
- FIRST FLOOR FLAT
- ONE BEDROOM
- SEPARATE STUDY
- FITTED KITCHEN
- CLOSE TO LOCAL AMENITIES



PROPERTY DESCRIPTION

Being sold chain free, this one bedroom first floor flat situated in the south of Stevenage. The property comprises Lounge, kitchen, bathroom, study and bedroom on the second floor.

Spring Drive is located Broadwater, Stevenage, a great position close to the A1(m) and A602 and local amenities including:

Marymead medical practice 0.1 Miles

Local Shops 0.2 Miles

Shephalbury Park School 0.2 Miles

Barnwell Secondary 0.6 Miles

A1m 1.2 Miles

Stevenage Town Centre 1.8 Miles

Stevenage Train Station 1.9 Miles



ROOM DESCRIPTIONS

FIRST FLOOR

LOUNGE

2.86m x 5.29m (9' 5" x 17' 4")

'L' Shaped lounge with window to the rear aspect.

STUDY

1.61m x 3.16m (5' 3" x 10' 4")

Located off the lounge, this additional space is perfect as a office space.

KITCHEN

3.75m x 1.74m (12' 4" x 5' 9")

Fitted kitchen with a range of base and wall units, space for washing machine, undercounter fridge and freestanding cooker.

BATHROOM

1.68m x 2.04m (5' 6" x 6' 8")

Fully tiled with side panel bath with shower over, wash hand basin and w/c.

SECOND FLOOR

BEDROOM

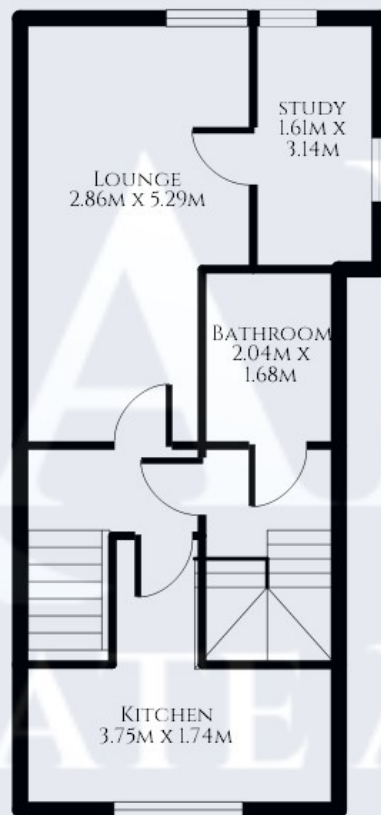
3.7m x 3.3m (12' 2" x 10' 10") with reduced head height.

Stairs directly into the room, two velux windows to the rear aspect. Hot water tank.



FLOORPLAN

KALM
- ESTATE AGENTS -



FIRST FLOOR



SECOND FLOOR

Stevenage
29, Shephall Green, Stevenage, SG2 9XS
01438 572020
linzi.davis@kalmestateagents.co.uk