

15 Lambrook Street

Glastonbury, BA6 8BY

COOPER
AND
TANNER



£565,000 Freehold

🛏 3 🛋 1 🚿 2 EPC TBC

Description

This stunning period home is just a short walk from Glastonbury's iconic High Street and is filled with character features and charm. The property also features a summer house and self-contained garden studio with independent access to provide a variety of options. The bright, ground floor accommodation comprises; a spacious kitchen/dining room with garden views and a cosy sitting room. Each room is fitted with antique fires, wood floors and benefits from dual aspects. Three double bedrooms, an en-suite shower room and the family bathroom are located on the first floor. The tranquil walled garden offers privacy and includes a sun terrace, a variety of decorative shrubs and a working Well.

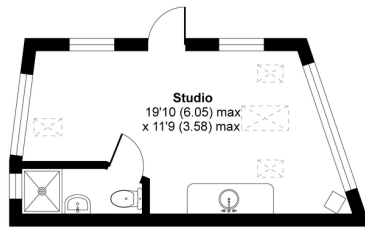
Glastonbury, BA6

Approximate Area = 1058 sq ft / 98 sq m

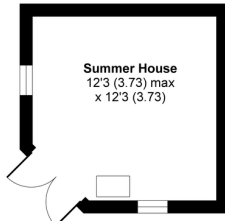
Outbuilding = 358 sq ft / 33 sq m

Total = 1416 sq ft / 131 sq m

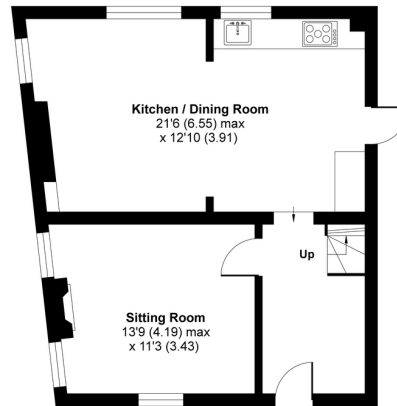
For identification only - Not to scale



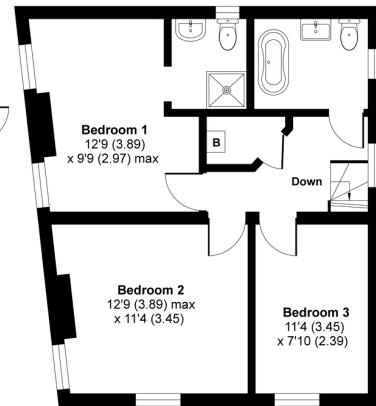
OUTBUILDING 1



OUTBUILDING 2



GROUND FLOOR



FIRST FLOOR



Floor plan produced in accordance with RICS Property Measurement Standards incorporating International Property Measurement Standards (IPMS2 Residential). © richcom 2021. Produced for Cooper and Tanner. REF: 720050



Features

- Stunning period home in a Town Centre location
- GRADE II LISTED
- Independently accessed garden studio and summer house
- Packed with period features, including working fires and wood floors
- OFF ROAD PARKING
- En-suite bedroom
- Pedestrian side access to garden
- Private walled garden
- Sash windows
- Freehold - Council Tax Band C

Local Information

- Council Tax Band E
- Tenure Freehold
- EPC Rating TBC

GLASTONBURY OFFICE

Telephone 01458 831077

41, High Street, Glastonbury, Somerset BA6 9DS

glastonbury@cooperandtanner.co.uk

**COOPER
AND
TANNER**

Important Notice: These particulars are set out as a general outline only for the guidance of intended purchasers and do not constitute, nor constitute part of, an offer or contract. All descriptions, dimensions, reference to condition and necessary permissions for use and occupation, warranties and other details are given without responsibility and any intending purchasers should not rely on the same as statements or representations of fact but must satisfy themselves by inspection or otherwise as to the correctness of each of them.

