

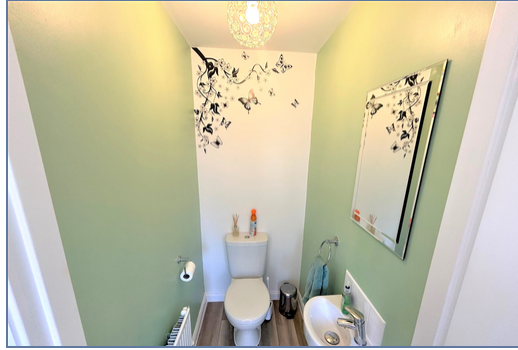


9 Oceans Close, Brooklands, Milton Keynes, Buckinghamshire, MK10 7HJ

£160,000 Leasehold

- Two large double bedrooms
- 50% Shared Ownership
- Beautifully Presented Garden
- Parking for Two Cars
- Rent- £361.38pm
- Service Charge- £2.26pm
- EPC-B
- Council Tax Band- C
- £3,000 FIXTURE AND FITTINGS
- EPC Rating





SHARED OWNERSHIP

Stylish two bedroom shared ownership end of terrace home with parking for two cars. On the ground floor of this home is the spacious family living room and open plan kitchen diner fitted with integrated appliances. Off the kitchen is the back door to the garden and downstairs cloakroom. The first floor of this property are the two double bedrooms both of which offer storage space. Finally there is the three piece family bathroom. To the rear of the home is the beautifully presented garden and gate access to the parking for two cars. Brooklands is a sought-after area in Milton Keynes, providing easy access to both Central Milton Keynes and to the M1 junction 14 with outstanding schools within walking distance.

Disclaimer

Whilst we have endeavoured to prepare our sales particulars accurately none of the services, appliances or equipment have been tested. A buyer should satisfy themselves on such matters prior to purchase. Any measurements or distances mentioned in these particulars are for guide reference only. If such particulars are fundamental to a purchase, buyers should rely on their own enquiries. All enquiries should be directed to Elevation Estate Agents in the first instance.