







# Key Features

 2 Bedrooms

 1 Public

 1 Bathroom

- Located within the small Hamlet of Steelend, this immaculate two bedroom upper flat has been upgraded throughout and is offered to the market in true move in condition
- This home would make an ideal first-time home or buy to let investment
- Steelend sits on the outskirts of Saline and is surrounded by unspoiled countryside and located within walking distance of nearby Saline with amenities including primary schooling, community centre, golf course and walks through Saline Glen
- The city of Dunfermline is located circa 6 miles away, benefitting from a wider range of amenities including various supermarkets, bars, eateries and various leisure facilities throughout the city
- For those needing to commute there are various railway stations within Dunfermline, Rosyth and Inverkeithing and Park and Ride facilities at Halbeath with a regular service to Edinburgh Airport
- For those travelling by car, the M90 motorway can easily be reached with links across central Scotland
- Neat gardens to the rear, mostly laid to lawn with a rear access road leading to a driveway for private parking
- Pleasant outlooks
- Entrance hall with storage for coats and shoes
- Stairs leading to accommodation
- Living room with outlooks to the front and a contemporary kitchen comes equipped with a range of floor and wall mounted storage, good worktop space and integrated fridge freezer, fan oven and induction hob
- Modern, shower room with double shower unit, rainfall shower head, WC, vanity unit with wash hand basin and room to house washing machine
- Master double bedroom with a good selection of built in storage available and a secondary bedroom, currently presented as a dining room which can accommodate a double bed
- Gas central heating and double glazing
- A fantastic, upgraded flat and viewing comes highly recommended to appreciate this perfect first-time home in a quiet residential location

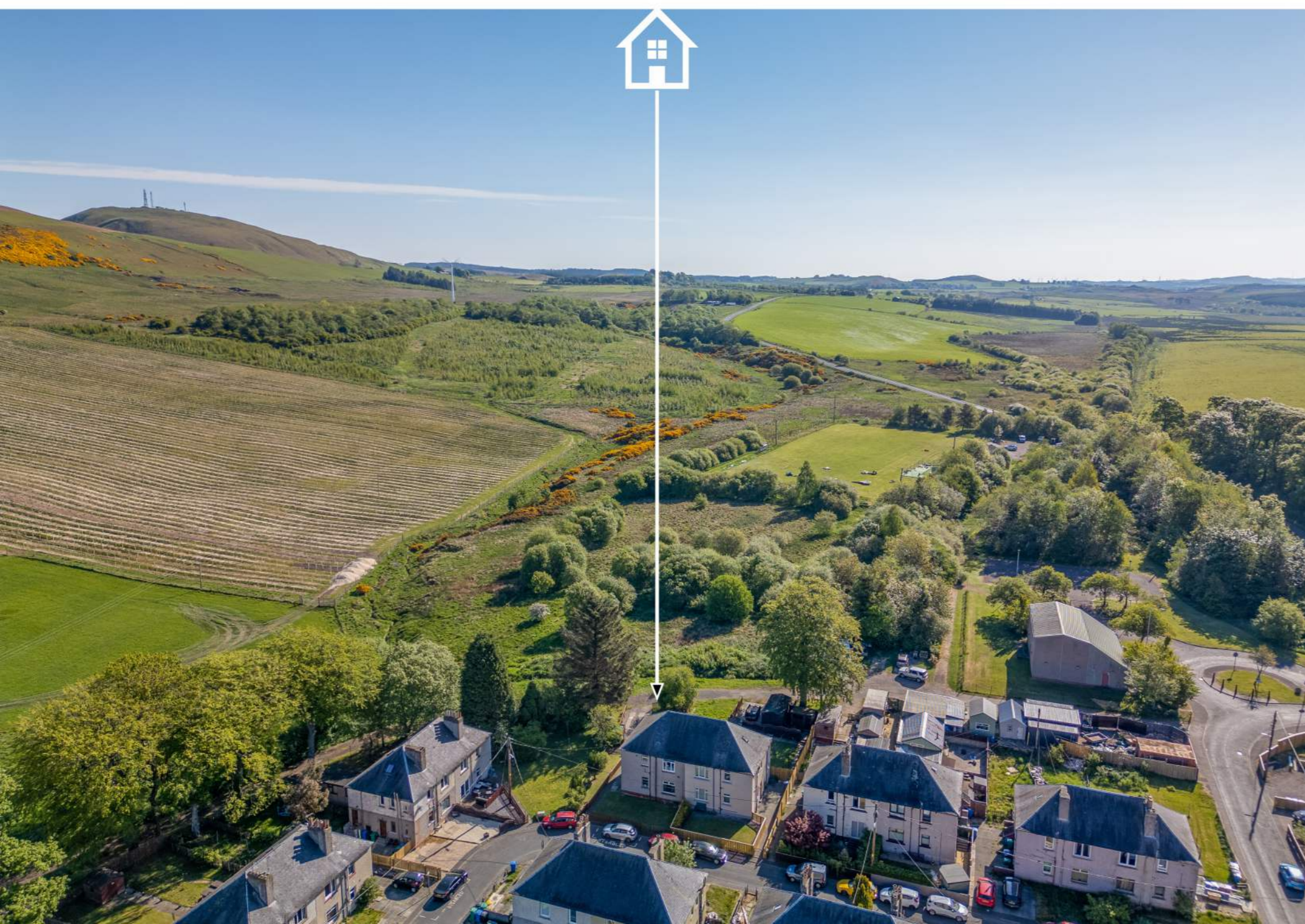


# Location

Steelend is a charming and peaceful village located in the heart of Fife, Scotland. Nestled amidst the picturesque rolling countryside, it offers a tranquil setting with easy access to local amenities and major transport links. The village is just a short drive from the larger towns of Dunfermline and Stirling, making it ideal for those seeking a rural lifestyle with the convenience of nearby urban facilities.

For commuters, Steelend is well-connected, with the M90 motorway providing direct access to Edinburgh, Perth, and other key destinations in central Scotland. The surrounding area is known for its natural beauty, with numerous outdoor recreational opportunities, including scenic walking trails and nearby woodlands.

The village also benefits from a strong sense of community, with local services including a primary school and a variety of shops and services just a short drive away. Whether you're looking for a peaceful retreat or a base to explore the wider Fife region, Steelend offers the best of both worlds.

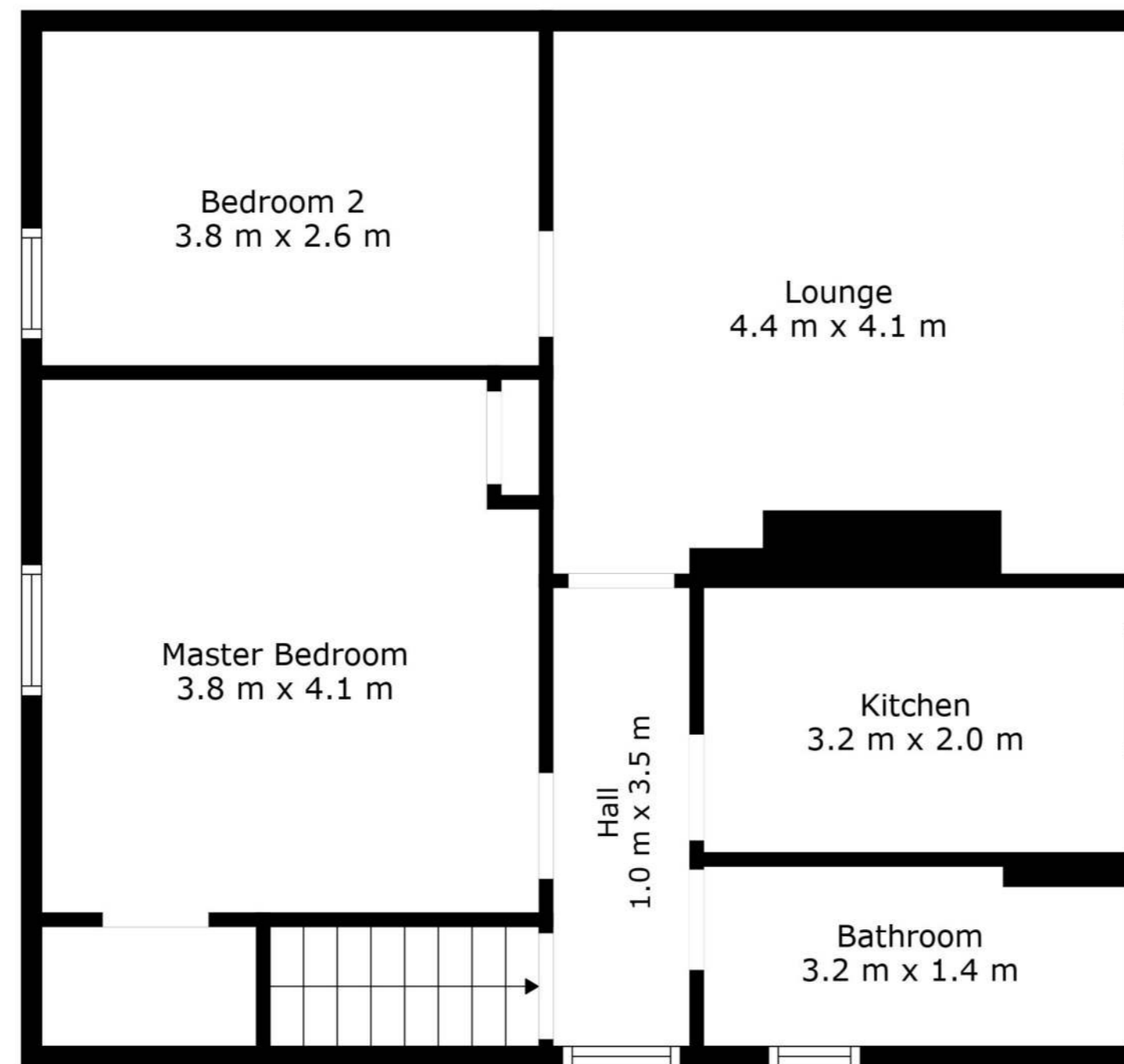


## Enquiries

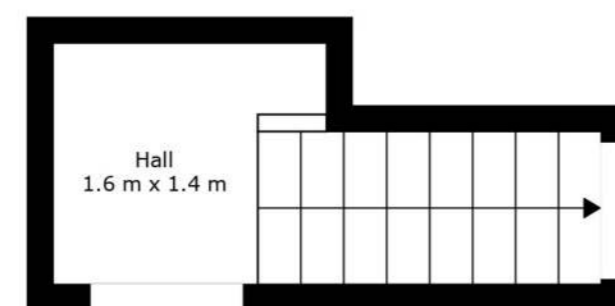
 01383 629720

 [info@maloco.co.uk](mailto:info@maloco.co.uk)

 [maloco.co.uk](http://maloco.co.uk)



Floor 2



Floor 1

**TOTAL: 68 m<sup>2</sup>**  
FLOOR 1: 4 m<sup>2</sup>, FLOOR 2: 64 m<sup>2</sup>

Measurements Are Regarded As Highly Reliable; However, They Cannot Be Guaranteed.



Floorplans are for illustrative purposes only. Measurements are deemed highly reliable but not guaranteed.

