

# Pampas Court

Warminster, BA12 8RS

COOPER  
AND  
TANNER



£210,000 Freehold

2 1 1 EPC B

## Description

Cooper and Tanner are pleased to present this great investment opportunity. This two bedroom mid terraced property situated in a quiet cul-de-sac location comes to market with a sitting tenant and offers a great opportunity for investors to purchase a property with a tenant in situ. In brief the accommodation comprises entrance hallway, kitchen and reception room on the ground floor. Upstairs, that are two bedrooms and the bathroom. To the rear, there is an enclosed rear garden. The property also offers off street parking for 2 vehicles.

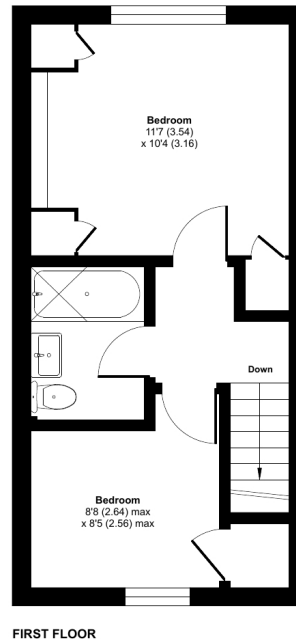
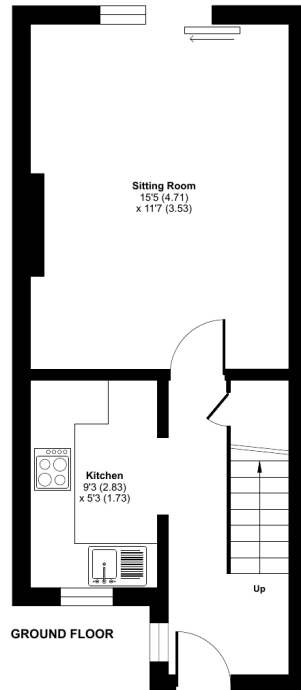




## Pampas Court, Warminster, BA12

Approximate Area = 605 sq ft / 56.2 sq m

For identification only - Not to scale



Floor plan produced in accordance with RICS Property Measurement 2nd Edition, incorporating International Property Measurement Standards (IPMS2 Residential). © nichecom 2025. Produced for Cooper and Tanner. REF: 1333079



### Features

- Investment opportunity
- Two bedrooms
- Cul de sac location
- Tenant in situ
- Off street parking
- Enclosed rear garden
- No onward chain
- Situated close to the local amenities

### Local Information

- **Tenure** Freehold
- **EPC Rating** B

#### WARMINSTER OFFICE

Telephone 01985 215579

48-50, Market Place, Warminster, Wiltshire BA12 9AN

[warminster@cooperandtanner.co.uk](mailto:warminster@cooperandtanner.co.uk)

**COOPER  
AND  
TANNER**

Important Notice: These particulars are set out as a general outline only for the guidance of intended purchasers and do not constitute, nor constitute part of, an offer or contract. All descriptions, dimensions, reference to condition and necessary permissions for use and occupation, warranties and other details are given without responsibility and any intending purchasers should not rely on the same as statements or representations of fact but must satisfy themselves by inspection or otherwise as to the correctness of each of them.



**RICS**



**OnTheMarket**