



THE ESTATE AGENTS  
1977





**Broadmead Avenue, Northampton NN3 2QY**  
**Offers Over £300,000 - Freehold**



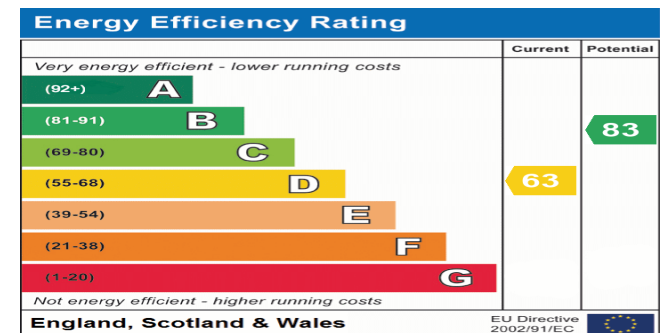
## PROPERTY DESCRIPTION

The Estate Agents are pleased to present this spacious, three bedroom 1930's semi-detached family home in the highly sought after area of Abington. The accommodation briefly comprises; a light and welcoming entrance hall with Karndean flooring continuing to the kitchen, an open plan living/dining room, conservatory and W.C. On the first floor are three bedrooms, all with fitted wardrobes and family bathroom. Outside the property has a drive with off road parking to the front, a generous rear garden, garden store and workshop.

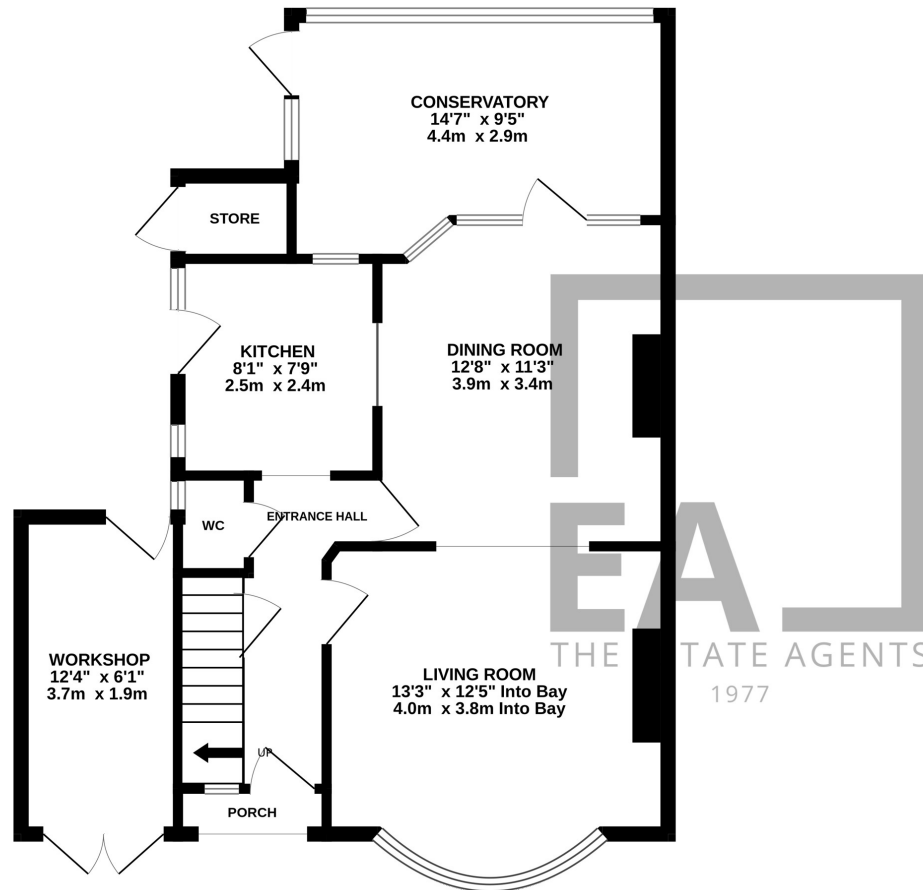
The property is ideally located close to local amenities and within easy reach of major supermarkets, Abington Park, the vibrant Wellingborough Road with a variety of bars and eateries. There's a choice of primary and secondary schools in the area and for the commuter Northampton train station has a regular service to London Euston in under an hour.

## POINTS OF INTEREST

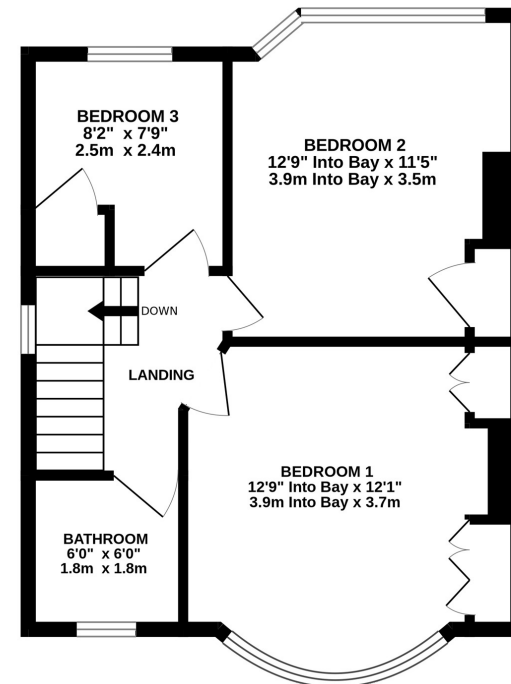
- Three Bedroom Semi Detached
- Open Plan Living / Dining Room
- Conservatory
- Off Road Parking
- Generous Rear Garden
- Garden Store
- Workshop With Double Doors
- Loft Room With Pull Down Ladder
- Sought After Location
- Superb Family Home



GROUND FLOOR  
653 sq.ft. (60.6 sq.m.) approx.



1ST FLOOR  
441 sq.ft. (40.9 sq.m.) approx.



TOTAL FLOOR AREA : 1093 sq.ft. (101.6 sq.m.) approx.

Whilst every attempt has been made to ensure the accuracy of the floorplan contained here, measurements of doors, windows, rooms and any other items are approximate and no responsibility is taken for any error, omission or mis-statement. This plan is for illustrative purposes only and should be used as such by any prospective purchaser. The services, systems and appliances shown have not been tested and no guarantee as to their operability or efficiency can be given.  
Made with Metropix ©2025