



Orchard Street, Old Moulsham, Chelmsford, Essex, CM2 0HD

Council Tax Band B (Chelmsford City Council)

 2  4  1

Offers in Excess of £375,000 Freehold

Bond Residential are delighted to offer for sale this four bedroom end terrace character property situated in the popular Old Moulsham area being sold with no onward chain.

The property offers a ground floor WC, lounge, dining room and fitted kitchen with integrated appliances. To the first floor this unique home offers four bedrooms and a four piece family bathroom with modern white suite. Outside the property benefits from on road permit parking (permits can be purchased from Chelmsford City Council) and a courtyard rear garden.

LOCATION

Old Moulsham, a historic and picturesque area located in the heart of Chelmsford. This charming neighbourhood is known for its stunning period homes, tree-lined streets, and friendly community atmosphere. The area is home to a mix of families, professionals and retirees, and offers a fantastic quality of life.

The village-like feel of Old Moulsham is enhanced by a range of independent shops, cafes and restaurants. Old Moulsham boasts a range of architectural styles, from quaint Tudor cottages to grand Georgian townhouses, all steeped in history and character. The local church, St John the Evangelist, is a stunning example of Victorian architecture and a focal point of the community.

For those who enjoy the outdoors, Old Moulsham has plenty to offer. The area is surrounded by beautiful parks and green spaces, including Oaklands Park, which boasts tennis courts, a children's playground, and a small cafe within Chelmsford Museum which also within the grounds.

Old Moulsham is also conveniently located for commuters, with Chelmsford train station being within walking distance, providing fast and frequent services to London Liverpool Street, making it an ideal location for those looking for easy access to the capital.

Chelmsford city centre offers a thriving nightlife with a selection of bars and a wide selection of places to eat from independent family restaurants to well known chain restaurants serving cuisines from around the world, Chelmsford features a comprehensive range of shopping facilities with its pedestrianised High Street, two shopping precincts and hugely popular Bond Street with John Lewis store.

For families, there are two sought after infant schools, Moulsham Junior school and Moulsham High School, there is a selection of private schools within walking distance of Old Moulsham as well being conveniently located within access of Chelmsford's two grammar schools. Overall, Old Moulsham is a delightful and highly sought-after area, offering the perfect blend of history, community, and convenience.

- End Terrace Character House
- Two Reception Rooms
- Ground Floor WC
- Four Bedrooms
- No Onward Chain

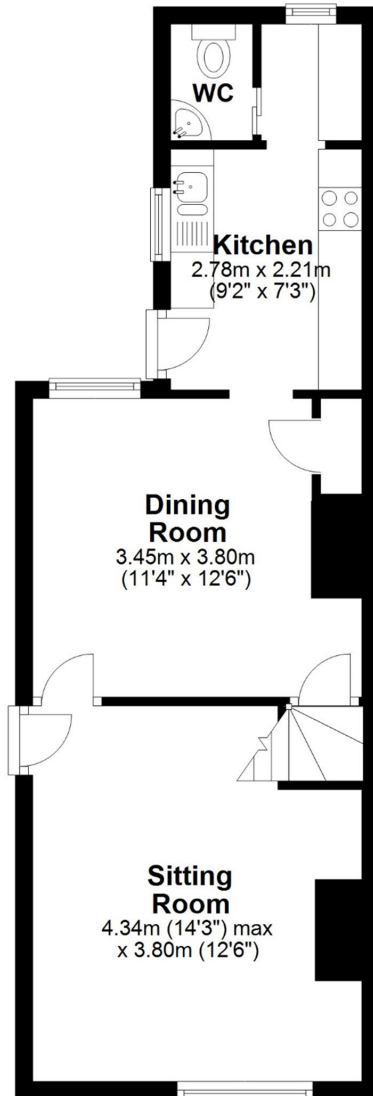
- Gas central Heating
- Fitted Kitchen
- First Floor Bathroom
- Courtyard Garden



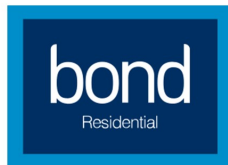




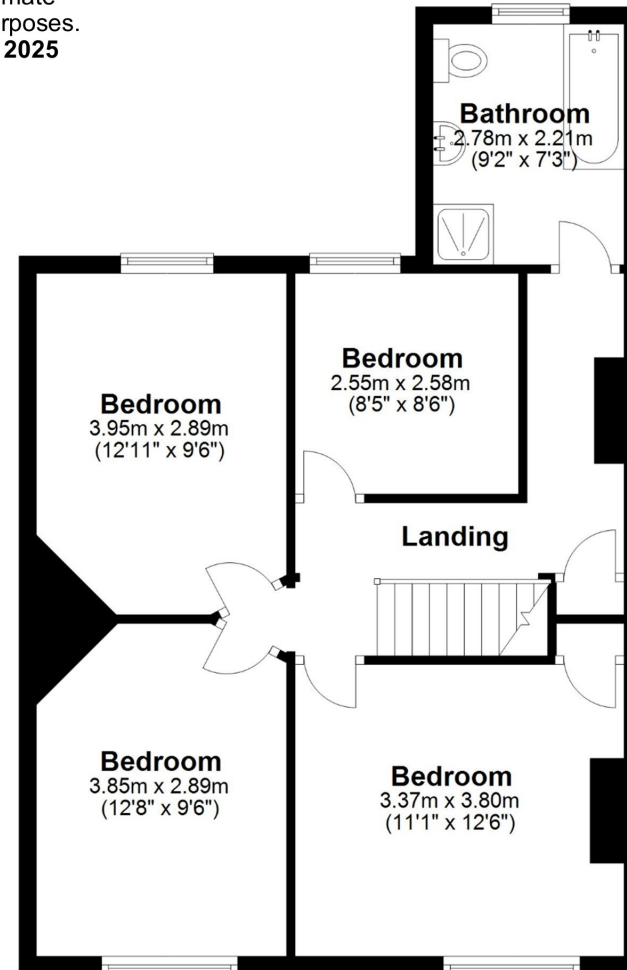
Ground Floor



APPROX INTERNAL FLOOR AREA
100 SQ M (1070 SQ FT)
This floorplan is for illustrative purposes only and is **NOT TO SCALE**
all measurements are approximate
NOT to be used for valuation purposes.
Copyright Bond Residential 2025



First Floor



78, New London Road,
Chelmsford, Essex, CM2 0PD

Telephone: 01245 500599

Website: www.bondresidential.co.uk

Consumer Protection from Unfair Trading Regulations 2008 and the Business Protection from Misleading Marketing Regulations 2008. Bond Residential have made every effort to ensure that consumers and/or businesses are treated fairly and provided with accurate material information as required by law. We have not tested any apparatus, equipment, fixture, fitting or any services and as such are unable to verify they are in working order, fit for their purpose, or within the ownership of the seller or landlord. Neither have we been able to check the legal documentation to verify the legal status of the property. We therefore advise potential buyers or tenants to verify these matters with their own solicitors or other advisers.

