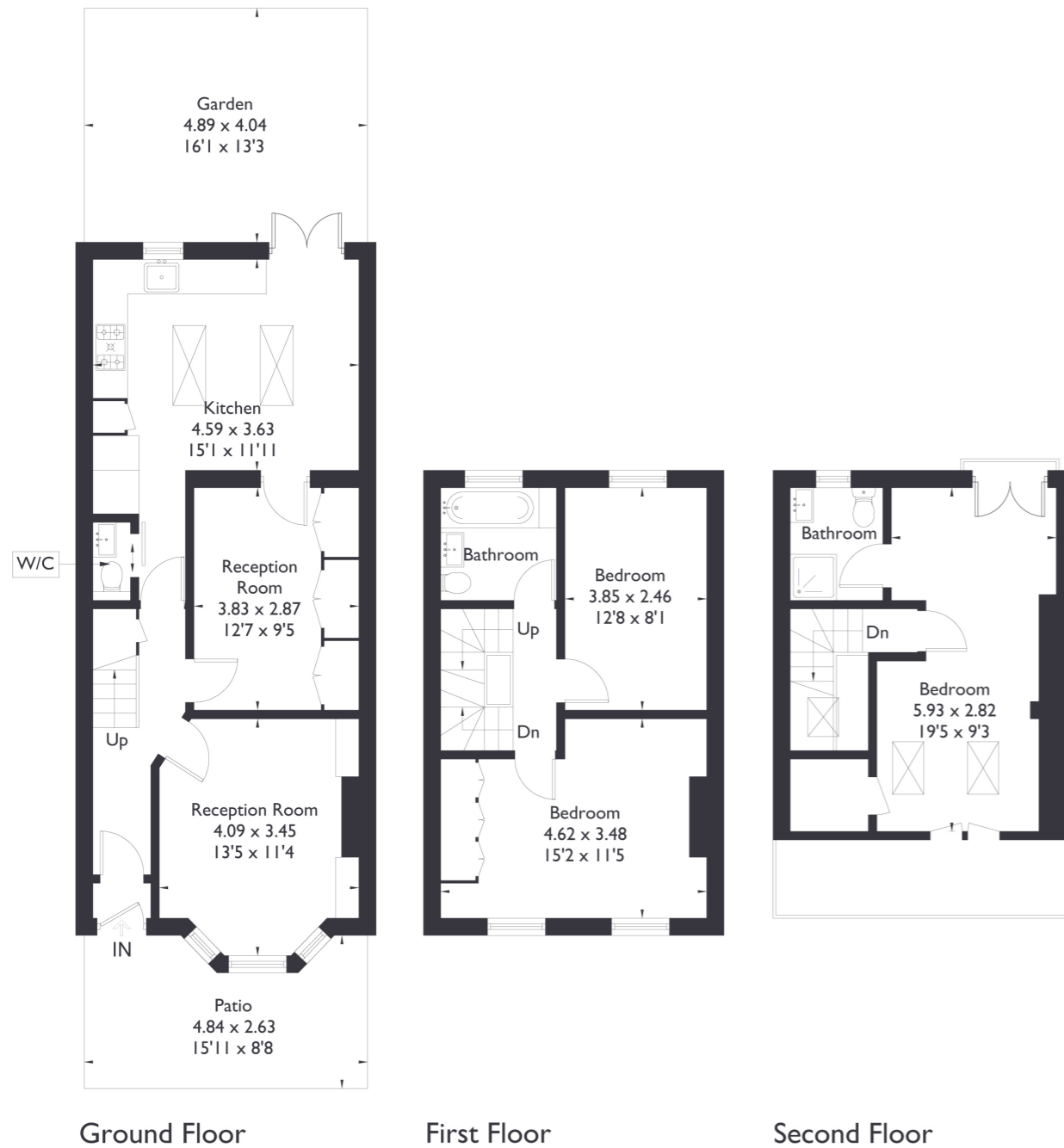


Balfour Road, W13

Approximate Floor Area = 115.6 sq m / 1244 sq ft



3 BEDROOM HOUSE

Balfour Road, W13
£950,000

This exquisite Edwardian property has been recently fully renovated to offer modern comforts while retaining its historic charm. The ground floor includes two separate reception rooms, an original fireplace, and parquet flooring. Along with two bathrooms, and a downstairs W.C., it has a beautifully bright kitchen and dining extension leading to a south facing garden that captures abundant natural light.

FEATURES

- Three Bedrooms
- Three Bathrooms
- Fully Renovated Recently
- Fielding Primary School
- Northfields Station
- Northfield Avenue Amenities
- EPC Rating D



3 BEDROOM HOUSE

Balfour Road, W13

Upstairs you'll find two spacious double bedrooms and a family bathroom on the first floor.

The top floor loft extension boasts a stunning double bedroom with a Juliette balcony, ample storage, and an en suite bathroom. Situated in a prime location, the property falls within the catchment area of the outstanding Fielding Primary School. It is also conveniently close to Northfields amenities and Northfields Station on the Piccadilly Line. Additionally, the Elizabeth Line at West Ealing is just a 10-minute walk away, enhancing connectivity and ease of access to the city. EPC Rating D.

