



Day & Co
ESTATE AGENTS

28 Cavendish Street
Keighley
BD21 3RG



11 Scarlet Heights, Queensbury,
Bradford, West Yorkshire, BD13
1BD

£75,000

T: 01535 664609

W: www.dayandcoestateagents.co.uk

E: keighley@dayandcoestateagents.co.uk

- ONE BED CORNER TERRACE
- Double Glazing
- EPC RATING D

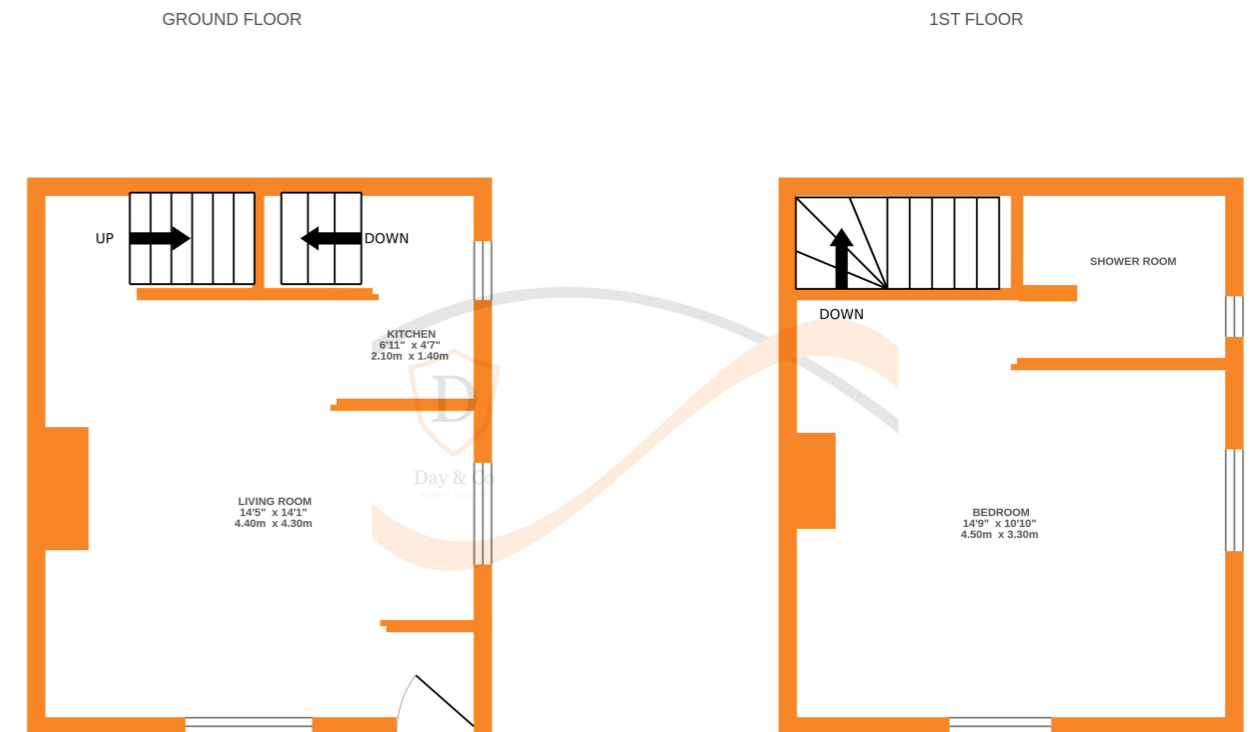
- SIDE GARDEN
- Gas Central Heating & Double Glazing

SUMMARY

** ONE BEDROOM CORNER BACK/BACK TERRACE HOUSE, DOUBLE GLAZING, GAS CENTRAL HEATING, GARDEN, EPC RATING D **

FULL DESCRIPTION

Offered for sale is this one bedroom corner back/back terrace house with garden. Gas central heating and double glazing. Briefly comprises - Living Room, Kitchenette, Cellar. First Floor - Double Bedroom, Shower Room. Side garden. EPC Rating D



Whilst every attempt has been made to ensure the accuracy of the floorplan contained here, measurements of doors, windows, rooms and any other items are approximate and no responsibility is taken for any error, omission or mis-statement. This plan is for illustrative purposes only and should be used as such by any prospective purchaser. The services, systems and appliances shown have not been tested and no guarantee as to their operability or efficiency can be given.
Made with Metropix ©2024