



brown & kay

residential sales

lettings

mortgages

land & new homes

auctions



rightmove   
find your happy

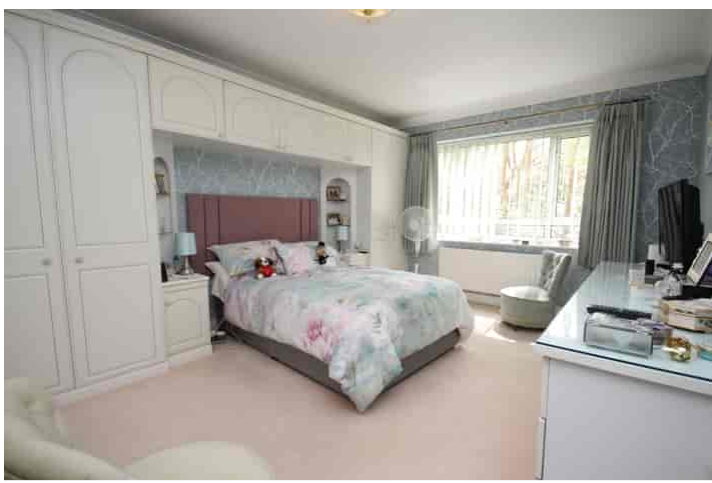
DISCLAIMER PROPERTY DETAILS: These particulars, whilst believed to be accurate are set out as a general outline only for guidance and do not constitute any part of an offer or contract. Intending purchasers should not rely on them as statements or representation of fact, but must satisfy themselves by inspection or otherwise as to their accuracy. We have not carried out a detailed survey nor tested the services, appliances and specific fittings. Room sizes should not be relied upon for carpets and furnishings. The measurements given are approximate. No person in this firm's employment has the authority to make or give any representation or warranty in respect of the property.

20, Seamoor Road, Bournemouth, Dorset, BH4 9AR Also at: 30 Hill Street, Poole BH15 1NR Tel: 01202 676292



Email: [sales@brownandkay.co.uk](mailto:sales@brownandkay.co.uk) Web: [www.brownandkay.co.uk](http://www.brownandkay.co.uk) Tel: 01202 765995





## Flat 3, St James Court 26 The Avenue, BRANKSOME PARK BH13 6BF

£400,000

### The Property

Brown and Kay are pleased to market this extremely spacious three bedroom apartment situated in the highly sought after area of Branksome Park. The home occupies a first floor position and affords generous and well arranged accommodation and benefits from a spacious entrance hall, a large 'L' shaped lounge/dining room, a lovely enclosed balcony with two sets of doors to allow for an outdoor feeling, en-suite to the master bedroom, and a garage. Additionally, there is a share of the freehold and with no onward chain this would make a wonderful main home purchase or holiday home alike.

St James Court sits in this highly sought after location well placed for all the area has to offer. Westbourne with its wide and varied range of cafe bars, restaurants and boutique shops together with the usual high street names such as Marks and Spencer is close to hand, as are bus services which operate to surrounding areas. Golden sandy beaches with miles upon miles of scenic promenade stretching to Bournemouth and beyond in one direction, and the famous Sandbanks in the other are also close by.

### COMMUNAL ENTRANCE HALL

Secure entry system, stairs or lift to the first floor.

### SPACIOUS ENTRANCE HALL

Storage cupboard, further cupboard housing tank and linen storage.

### LOUNGE/DINING ROOM

21' 3" x 20' 2" (6.48m x 6.15m) max. A generous 'L' shaped room with double glazed windows to the front and side, three radiators, fireplace with matching hearth and mantel, double glazed door to enclosed balcony.

### ENCLOSED BALCONY

With two sets of opening doors to create the feeling of outdoor living.

### KITCHEN/BREAKFAST ROOM

11' 3" x 9' 0" (3.43m x 2.74m) Double glazed window, excellent range of wall and base units, work surface with inset gas hob, unit housing Neff oven, integrated fridge/freezer, integrated washing machine, integrated dishwasher, breakfast bar/table, radiator.

### BEDROOM ONE

21' 11" max in to door recess x 11' 4" (6.68m x 3.45m) including wardrobes. Double glazed window with pleasant outlook, radiator, extensive range of built-in wardrobes including two double sets with up and over storage, bedside cabinets and two single plus further double robe.

### EN-SUITE

8' 1" x 5' 1" (2.46m x 1.55m) Shower cubicle with wall mounted shower, inset flush w.c., wash hand basin and vanity unit, heated towel rail, tiled walls and flooring.

### BEDROOM TWO

11' 4" x 9' 10" (3.45m x 3.00m) Double glazed window, radiator, two sets of double wardrobes.

### BEDROOM THREE

11' 3" x 7' 8" (3.43m x 2.34m) Double glazed window, built-in double wardrobe, radiator.

### BATHROOM

7' 4" x 6' 6" (2.24m x 1.98m) Double glazed window, panelled bath with mixer taps and shower attachment, wash hand basin inset in to vanity unit, inset flush w.c. Heated towel rail, tiled walls.

### OUTSIDE

St James Court sits in beautifully maintained communal gardens which are laid to lawn with shrub beds and borders.

### GARAGE

A garage is conveyed with the property.

### TENURE - SHARE OF FREEHOLD

Length of Lease - 977 years remaining  
Maintenance - £2,276.94 including water and sewerage  
Management Agent - 26 The Avenue Management Company Ltd

### COUNCIL TAX - BAND F