

## Dene Close, Camberley, Surrey GU15 3RL

**PRICE £535,000 Freehold**

Jigsaw Estates are pleased to present to the market this end of terrace town house situated in a cul-de-sac location within walking distance to some excellent local schools.

Accommodation comprises four double bedrooms arranged across the back of the house and a kitchen/breakfast room. The four double bedrooms are arranged over the first and second floors and further benefit from an en-suite bathroom to the principle bedroom, a family bathroom on the first floor and a further shower room on the second floor. Additional benefits include a downstairs cloakroom, gas central heating and bi-fold doors leading from the living room to the rear garden.

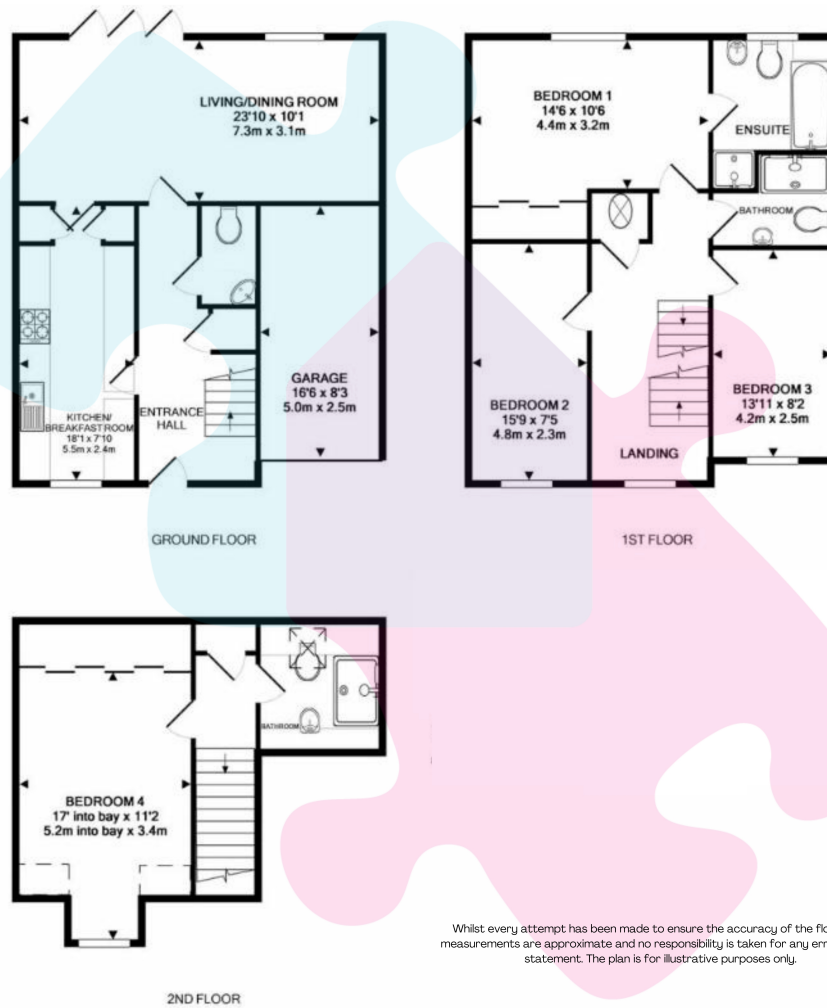
The garden has a patio to the immediate rear of the property with the remainder of the garden mainly laid to artificial lawn. There is a side gate giving access to the front of the property. To the front of the property there is a driveway with further visitors spaces located on the opposite side of the road. There is also an integral single garage with power and light.

The property is a short distance from Camberley town centre which offers an array of shops, restaurants and bars as well as Camberley train station which does offer some direct routes into London. The Meadows shopping centre is also within easy reach along with Junctions 3 & 4 of the M3.



- FOUR DOUBLE BEDROOMS
- INTEGRAL GARAGE
- CLOAKROOM
- DRIVEWAY
- CLOSE TO LOCAL SCHOOLS

- TOWN HOUSE
- EN-SUITE & TWO SHOWER ROOMS
- REAR GARDEN
- CUL-DE-SAC
- CLOSE TO CAMBERLEY TOWN CENTRE



Whilst every attempt has been made to ensure the accuracy of the floor plan, measurements are approximate and no responsibility is taken for any error or mis-statement. The plan is for illustrative purposes only.

