



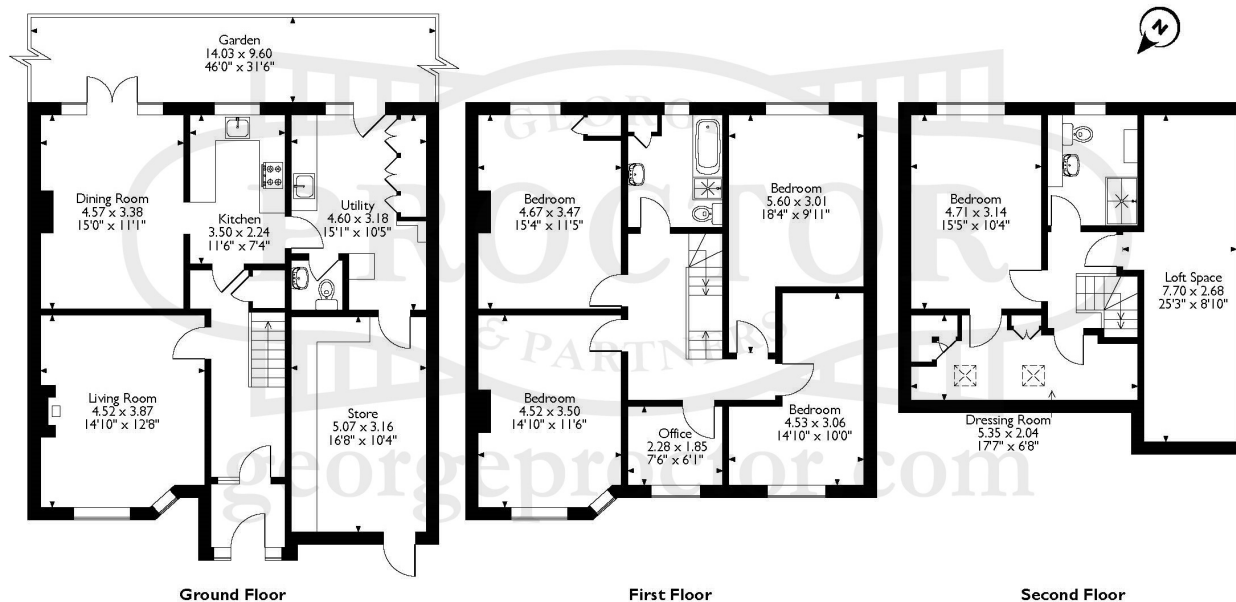
Pope Road,
Bromley, Kent. BR2 9QB

Tenure: Freehold

6 Bedrooms | 2 Reception Rooms | 3 Bathrooms



Approximate Gross Internal Area
222 Sq M/2389 Sq Ft



Please note that the location of doors, windows and other items are approximate and this floorplan is to be used for illustrative purposes only. Unauthorized reproduction is prohibited.

These particulars whilst believed to be accurate are made without responsibility on the part of the vendor or agents, their accuracy is not guaranteed nor do they form part of any contract and no warranty is given. Services or appliances have not been tested and no guarantee can be given as to their operation, buyers should seek professional advice where necessary. All measurements are approximate and may be rounded to the nearest three inches (10 cm). Floor plans, where shown, are indicative only. Any photographs included may be taken with the use of a wide angle lens. If there is a matter of particular interest please contact us for further information, especially before travelling any distance to view. Map reproduced by permission of Geographers A-Z Map Co Ltd. Licence No. A0514. This map is based upon Ordnance Survey maps with the permission of the controller of Her Majesty's Stationary Office.

GUIDE PRICE £850,000-£900,000 George Proctors & Partners are delighted to offer for sale this well presented extended six bedroom semi-detached family home offers you two receptions, three bathrooms, a utility room, landscaped gardens and off road parking. Arranged over three floors, located on a popular road in Chatterton Village, you'll not be far from the local amenities including Bistro's and Gastro bars in Bromley, a selection of great primary and secondary schools. With easy links to transport to the city and countryside. EPC Rating: C

Enquiries To:

T: 020 8464 5555

E: brsales@georgeproctor.com



Bromley Office

10-12 Chatterton Road, Bromley, Kent, BR2 9QN