



MAXWELLS



3 The Old Elephant & Castle, Causeway, Banbury, Oxfordshire. OX16 4SN
From £237,500 - Freehold



PROPERTY DESCRIPTION

The starting from price is with a 5% reduction from £250,000, however, the developer is happy to offer a 5% gifted deposit instead of the reduction in price should that prove more beneficial to you; please just ask for further details.

Forming part of the Grade II Listed Old Elephant & Castle located just a short walk from the town centre and train station is this two storey mews house offering a large open plan sitting/dining/kitchen, double bedroom and study plus allocated parking.

Located in the courtyard of The Old Elephant & Castle with two private doors leading into the mews house and a delightful patio area outside. Number 3 has an entrance hall, large open plan sitting/dining/kitchen, a good sized study, downstairs cloakroom, large bedroom with fitted wardrobes and a well appointed shower room.

There is allocated parking for one car in the rear courtyard and the access can be found off Causeway.

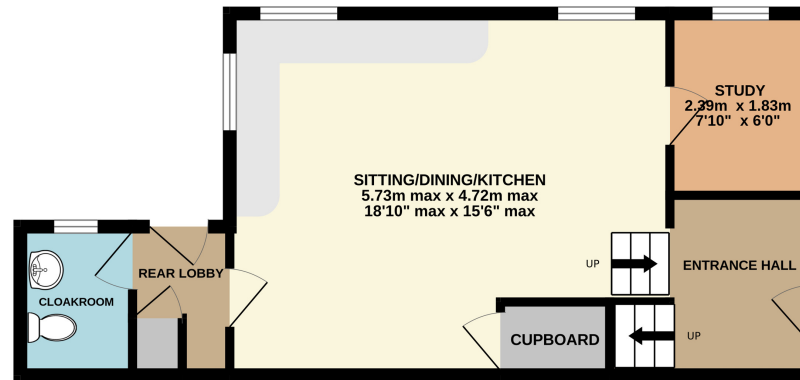
The mews houses will be offered for sale as freehold titles and are fitted with the latest low energy/high efficiency electric heating plus a 10 year building warranty.

Services connected include mains water, drainage and electricity; there is no mains gas connected to the site. While the property is freehold, there will be fee payable to contribute communal external lighting and is expected to be £100 per annum.

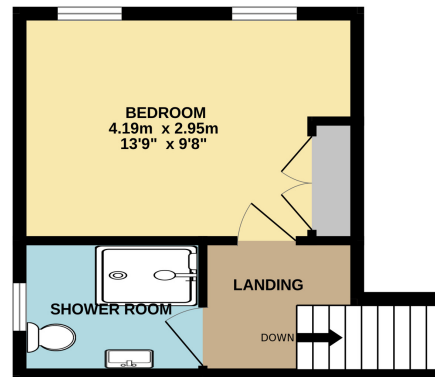
POINTS OF INTEREST

- Freehold Mews House
- Grade II Listed
- Large Sitting/Dining/Kitchen
- Double Bedroom With Fitted Wardrobes
- Study
- Shower Room
- Downstairs Cloakroom
- Allocated Parking

GROUND FLOOR
41.0 sq.m. (442 sq.ft.) approx.



1ST FLOOR
21.9 sq.m. (236 sq.ft.) approx.



TOTAL FLOOR AREA : 67.0 sq.m. (721 sq.ft.) approx.

Whilst every attempt has been made to ensure the accuracy of the floor plan contained here, measurements of doors, windows, rooms and any other items are approximate and no responsibility is taken for any error, omission or mis-statement. This plan is for illustrative purposes only and should be used as such by any prospective purchaser.
Made with Metropix ©2024