



Great Slades, Potters Bar, Hertfordshire, EN6 2ER

£325,000

- **NEWLY REFURBISHED**
- **OPEN PLAN LOUNGE / KITCHEN / DINER**
- **OWN ENTRANCE**
- **CHAIN FREE**
- **ONE BEDROOM GROUND FLOOR**
- **PRIVATE GARDEN**
- **CLOSE TO POTTERS BAR MAINLINE STATION.**
- **125 YEAR LEASE ON COMPLETION**

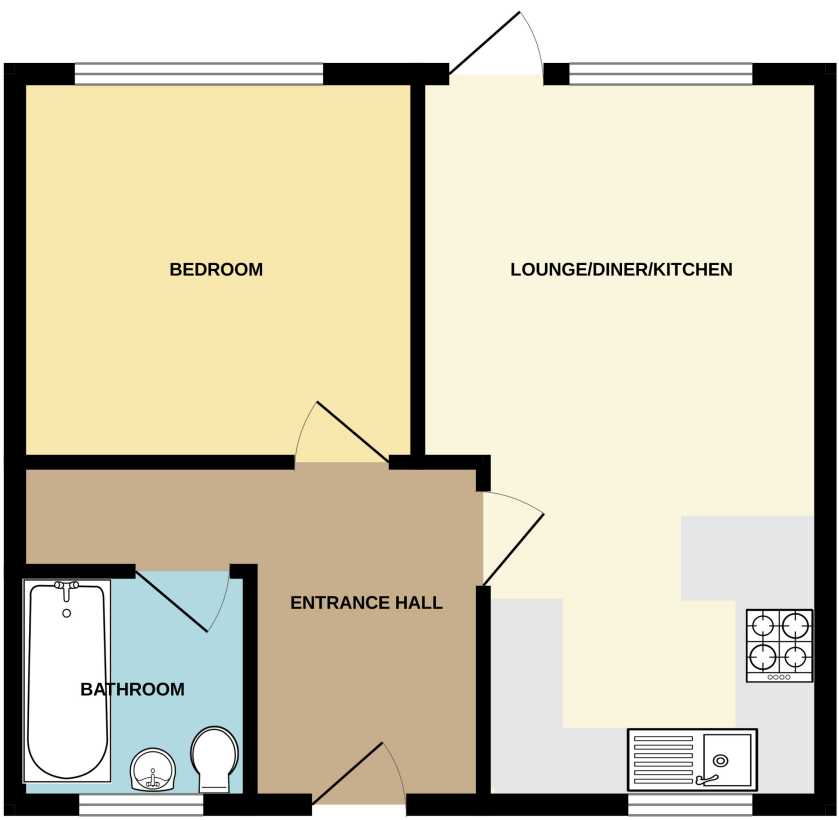
Great Slades, Potters Bar, Hertfordshire, . EN6 2ER

£325,000 Leasehold

This newly refurbished one bedroom ground floor maisonette is ideally located within a short walk to Potters Bar Mainline Station, shops, and amenities. The property is located on this quiet turning just off Baker Street and benefits from its own private rear garden, full internal refurbishment, with new modern fitted kitchen, luxury bathroom and new flooring throughout.

A short walk into Potters Bar Town Centre and Station (less than half a mile away), this is a perfect First Time Buy or Rental Investment, being offered for sale with No Onward Chain.

GROUND FLOOR
414 sq.ft. (38.5 sq.m.) approx.



TOTAL FLOOR AREA : 414 sq.ft. (38.5 sq.m.) approx.
Whilst every attempt has been made to ensure the accuracy of the floorplan contained here, measurements of doors, windows, rooms and any other items are approximate and no responsibility is taken for any error, omission or mis-statement. This plan is for illustrative purposes only and should be used as such by any prospective purchaser. The services, systems and appliances shown have not been tested and no guarantee as to their operability or efficiency can be given.
Made with Metropix ©2024

