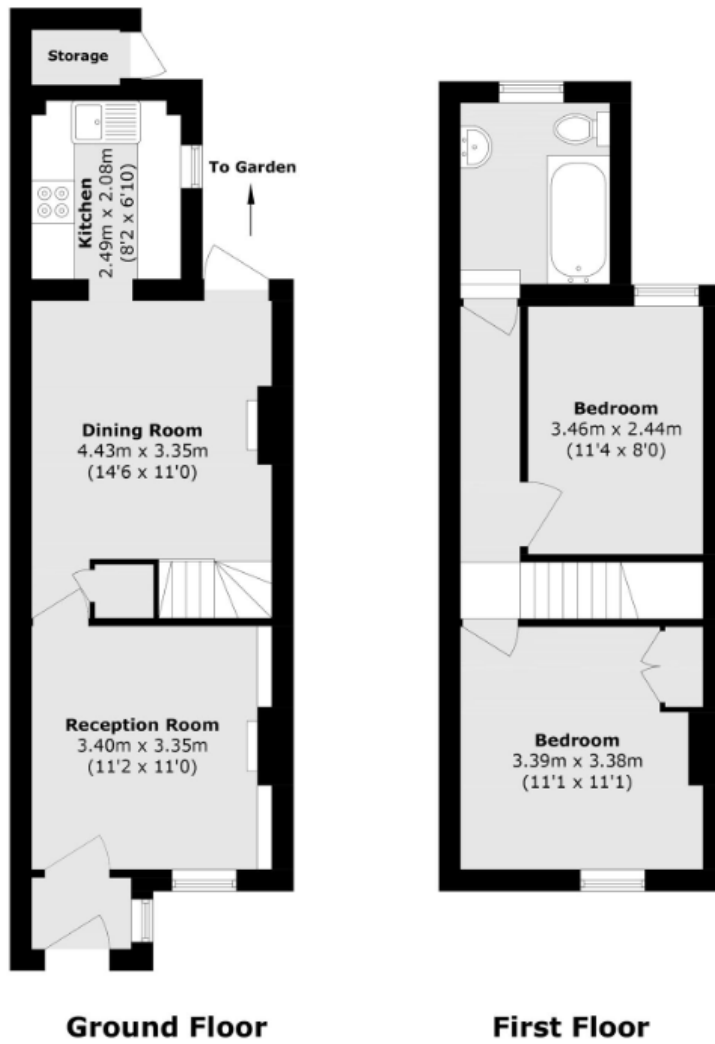


## Staveley Road, Ashford, TW15 1TF

### Guide Price £425,000



- No Onward Chain
- Character Cottage
- Two Double Bedrooms
- Freehold
- Ideal First Time Buy
- Bathroom Upstairs
- Large Rear Garden
- Close To Amenities



Total area (approx.): 66.4 sq. m (714.7 sq. ft)  
 External storage area (approx.): 0.9 sq. m (9.6 sq. ft)

Energy Efficiency Rating		Current	Potential
Very energy efficient - lower running costs			
(92+)	<b>A</b>		
(81-91)	<b>B</b>		
(69-80)	<b>C</b>		<b>77</b>
(55-68)	<b>D</b>	<b>56</b>	
(39-54)	<b>E</b>		
(21-38)	<b>F</b>		
(1-20)	<b>G</b>		
Not energy efficient - higher running costs			
England, Scotland & Wales		EU Directive 2002/91/EC	

We have not tested the services or domestic appliances so we cannot verify that they are in working order. The buyer is advised to obtain verification from their solicitor or surveyor. These particulars form no part of any offer or contract and their accuracy cannot be guaranteed.