



Bridge Cottage | Maulds Meaburn





3 

2 

2 

 lunevalley  
ESTATES.



EPC - F



Band B



Freehold



Drive your way through some of the most spectacular countryside with Fells and rolling hills green and lush fields. Wind through country lanes where sheep graze and rivers flow. Your senses awaken with the clean air and soothing sounds as you follow the lanes to Maulds Meaburn. A hidden gem in the Yorkshire Dales National Park where your neighbours become friends and life has that slower pace. As you leave the hustle and bustle behind and enter a more tranquil way of life.



Bridge Cottage is sat in the most idyllic location, with stunning views of the River Lyvennet, where limestone bedrock keeps the waters crystal clear and brown trout are abundant. The cottage has fishing rights to the river and anglers can delight in an afternoon of peaceful fishing and quiet contemplation.



The Butchers Arms is just a short walk away for those who want to enjoy a good pint of ale, fabulous home cooked food and a chat with locals.

Good transport links keep you connected, with the M6 being only a 10 minute drive away, making Bridge Cottage an ideal location for a weekend get away or a more permanent base for those looking to escape from modern life.

Nestled amongst the tranquil riverbank, this charming country cottage offers a serene retreat with picturesque views. Immerse yourself in the soothing sounds of nature, as the river gracefully flows past your new haven. Inside, rustic elegance meets modern comfort, creating a warm and inviting atmosphere. This beautiful home invites you to unwind and savour the beauty of waterside living.

Let us explore this truly captivating cottage and uncover all that it has to offer..

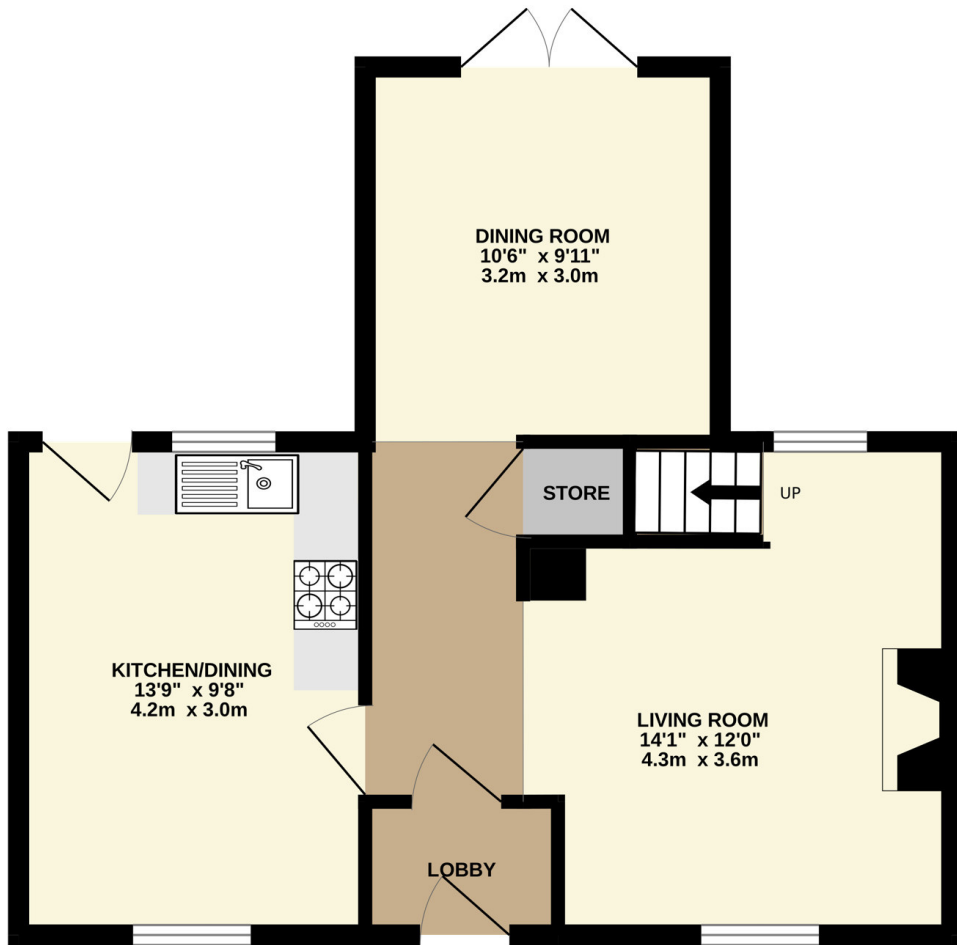
With three double bedrooms and an Ensuite to the Master, a Large family shower room, a snug lounge with dual aspect, a Garden Room with peaceful views and a dual aspect Kitchen Diner, Bridge Cottage will delight and enthrall with the space and elegance on offer... Park the car and walk along the Village Green to the wide wooden country gate which leads to a beautiful forecourt garden with stone built outbuildings to the right.

Walk to the front door and admire the established garden with mature planting and listen to the tranquil trickle of the river behind you.

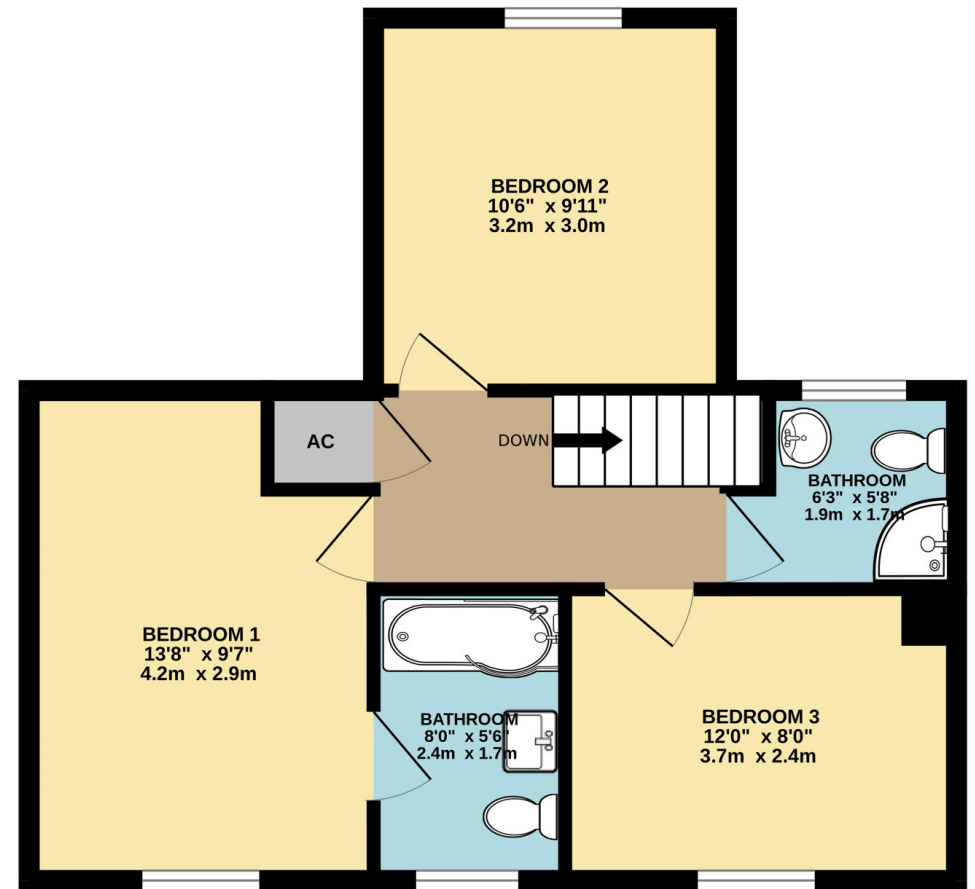




**GROUND FLOOR**  
456 sq.ft. (42.4 sq.m.) approx.



**1ST FLOOR**  
461 sq.ft. (42.8 sq.m.) approx.



# The Essentials



The Butchers  
Arms  
*1.1 miles*



Co-op  
*6.3 miles*



Eden River Cafe  
*6.2 miles*



Boots  
Pharmacy  
*6.2 miles*





# lunevalley

## ESTATES.



*Scan to visit our website!*

Suite 8, Willow Mill, Caton, LA2 9RA  
01524 256625  
team@lunevalleyestates.com  
lunevalleyestates.com