

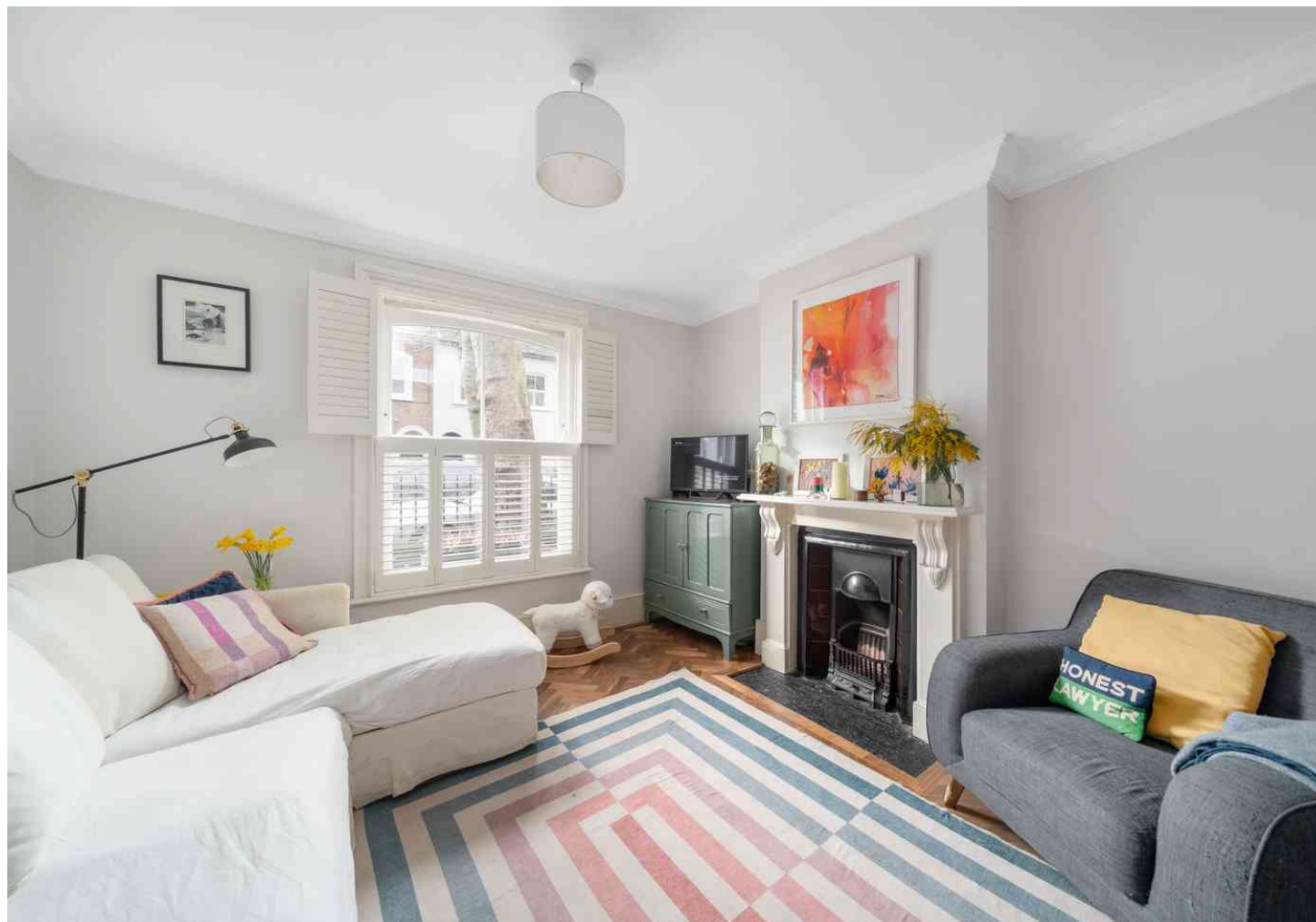
# FOR SALE

Paxton Road,  
Chiswick, W4

Terraced House  
West London

£1,100,000 fh

3  2  1 

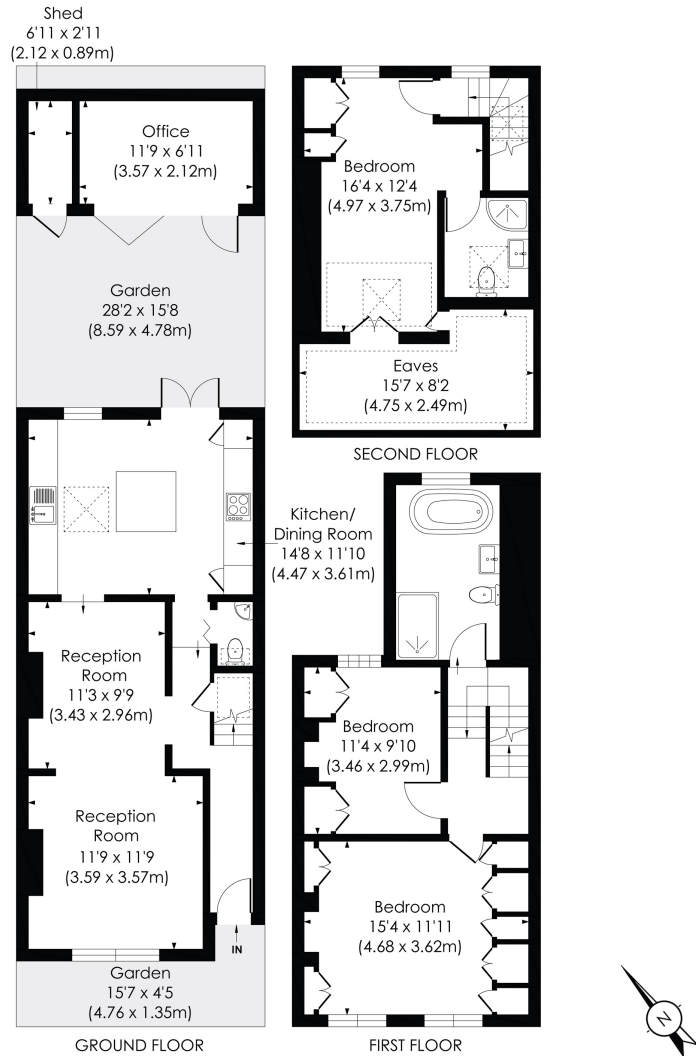


**horton  
and garton**

SALES / LETTINGS / PROPERTY MANAGEMENT

hortonandgarton.co.uk | Sales 020 3989 6464 | Lettings 020 3989 5454  
161 Chiswick High Road, London, W4 2DT





#### PAXTON ROAD, W4

Approx. Gross Internal Floor Area

**1395 Sq'/129.57 SqM** (Including Home Office and Reduced Height)

**1224 Sq'/113.72 SqM** (Including Home Office and Excluding Reduced Height)

Home Office: **85 Sq'/7.88 SqM**

© Pixangle Property Marketing Ltd. info@pixangle.com Tel: 0208 870 2118

**horton  
andgarton**

This floor plan has been prepared for the purpose of illustration only in accordance with the latest RICS code of measuring practice and is not to scale. All measurements and areas are approximate and whilst every effort has been made to ensure the accuracy of the plan contained here, no responsibility is taken for any error, omission or misstatement.



Victorian mid terrace house | Three bedrooms - Two bathrooms | 1224 Sq' - 113.72 SqM | 28' garden and home office | EPC rating D | Chiswick



hortonandgarton.co.uk

Sales 020 3989 6464

Lettings 020 3989 5454

161 Chiswick High Road, London, W4 2DT