

# Oakfield Road

Street, BA16 0RE

COOPER  
AND  
TANNER



Asking Price Of  
£80,000 Leasehold

🛏 1 🛋 1 🚿 1 EPC E

---

## Description

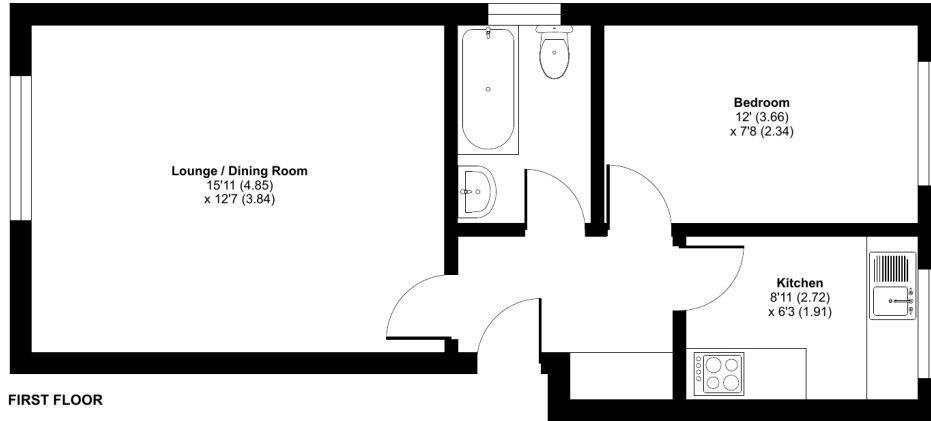
A well-proportioned and competitively priced first floor flat in this purpose-built block of just four properties, tucked away at the end of a popular residential cul-de-sac within a short walk of parks, a bus route, convenience store and Brookside School. Offered with no onward chain and requiring a degree of modernisation. We believe the incoming buyer will have use of a garage at the rear, subject to confirmation from their legal conveyancer. Communal enclosed gardens are also available, in addition to a general residents parking area.



## Oakfield Road, Street, BA16

Approximate Area = 460 sq ft / 42.7 sq m

For identification only - Not to scale



Floor plan produced in accordance with RICS Property Measurement Standards incorporating International Property Measurement Standards (IPMS2 Residential). © nichecom 2024. Produced for Cooper and Tanner. REF: 1070200



### Features

- One good size double bedroom
- Large open plan lounge/diner
- Separate kitchen and bathroom
- Access to enclosed communal garden
- Residents parking area
- Nestled at the end of a small cul-de-sac
- Fantastic BTL or FTB potential
- Competitively priced reflecting necessary updates
- Lease TBC - 'Absentee freeholder' enquire for more details

### Local Information

- Council Tax Band A
- Tenure Leasehold
- EPC Rating E

#### STREET OFFICE

Telephone 01458 840416

86, High Street, Street, Somerset BA16 0EN

[street@cooperandtanner.co.uk](mailto:street@cooperandtanner.co.uk)

**COOPER  
AND  
TANNER**

Important Notice: These particulars are set out as a general outline only for the guidance of intended purchasers and do not constitute, nor constitute part of, an offer or contract. All descriptions, dimensions, reference to condition and necessary permissions for use and occupation, warranties and other details are given without responsibility and any intending purchasers should not rely on the m as statements or representations of fact but must satisfy themselves by inspection or otherwise as to the correctness of each of them.

