

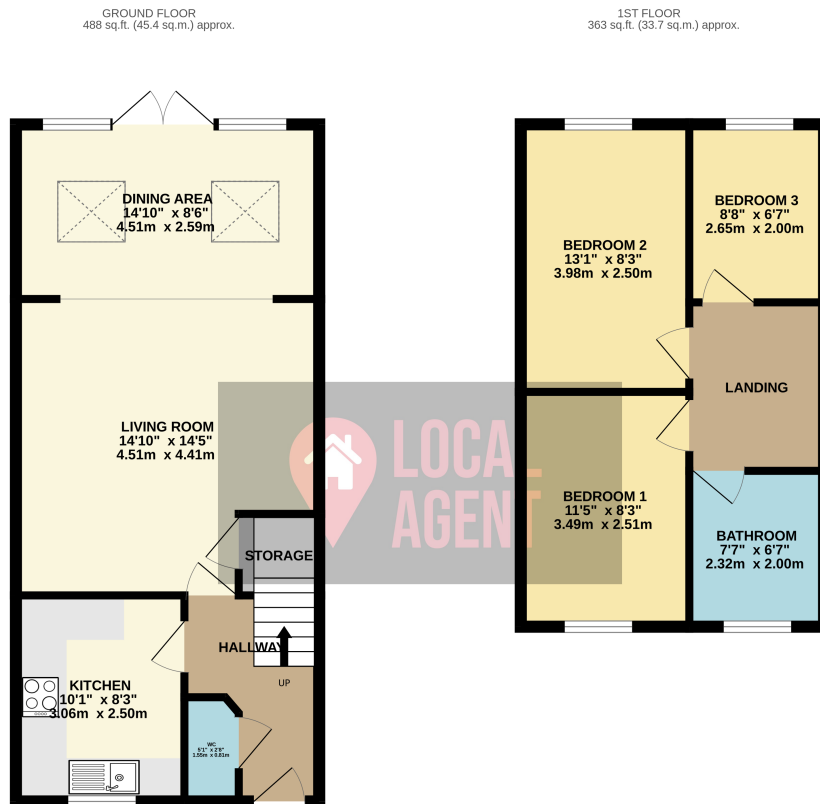
3 Egerton Close, Belvedere, Kent, DA17 6FA
£400,000 Freehold

Description

Recently Redecorated Throughout, this modern Three Bedroom End of Terrace House offers great internal space. With Three good sized bedrooms, modern bathroom and ground floor WC. Spacious living room with dining area. Use our online diary to request your viewing!

Located in the London Bexley Borough has excellent access to Bexley borough's four grammar schools as well as the popular Danson Park, with its historic house, boating lake and sport facilities. With easy access to the town centre offering a variety of shops, pubs, restaurants, leisure centers.

Belvedere and Erith train stations are a within walking distance with links to Cannon Street, Waterloo East, City Airport and DLR.



TOTAL FLOOR AREA: 851 sq.ft. (79.1 sq.m.) approx.

Whilst every attempt has been made to ensure the accuracy of the floorplan contained here, measurements