

## 6 Green Close

HAWKINGE, Folkestone  
CT18 7EL

**£625,000 FREEHOLD**

DRAFT DETAILS... FOR SALE WITH BURNAP + ABEL... Burnap + Abel are delighted to offer this stunning five bedroom detached house that has been tastefully modernised by the current vendors. The property is located in the sought after location of Green Close, Hawkinge and was built by the prestigious Pentland Homes. The accommodation comprises lounge, dining room, kitchen, utility room, downstairs cloakroom, conservatory, five bedrooms, family bathroom and en-suite shower room. Additional benefits include a spacious rear garden, integral garage and off road parking. For your chance to view call sole agent Burnap + Abel now on 01303 258590.



**Entrance Hall**

**Lounge**

17' 8" x 12' 5" (5.38m x 3.78m)

**Dining Room**

12' 4" x 9' 6" (3.76m x 2.90m)

**Kitchen**

13' 9" x 9' 6" (4.19m x 2.90m)

**Utility Room**

9' 7" x 5' 10" (2.92m x 1.78m)

**Conservatory**

11' 0" x 10' 0" (3.35m x 3.05m)

**W.C**

**First Floor Landing**

**Bedroom One**

18' 0" x 9' 6" (5.49m x 2.90m)

**En-Suite**

**Bedroom Two**

13' 7" x 12' 7" (4.14m x 3.84m)

**Bedroom Three**

12' 6" x 9' 7" (3.81m x 2.92m)

**Family Bathroom**

9' 5" x 6' 4" (2.87m x 1.93m)

**Bedroom Four**

10' 3" x 7' 6" (3.12m x 2.29m)

**Bedroom Five**

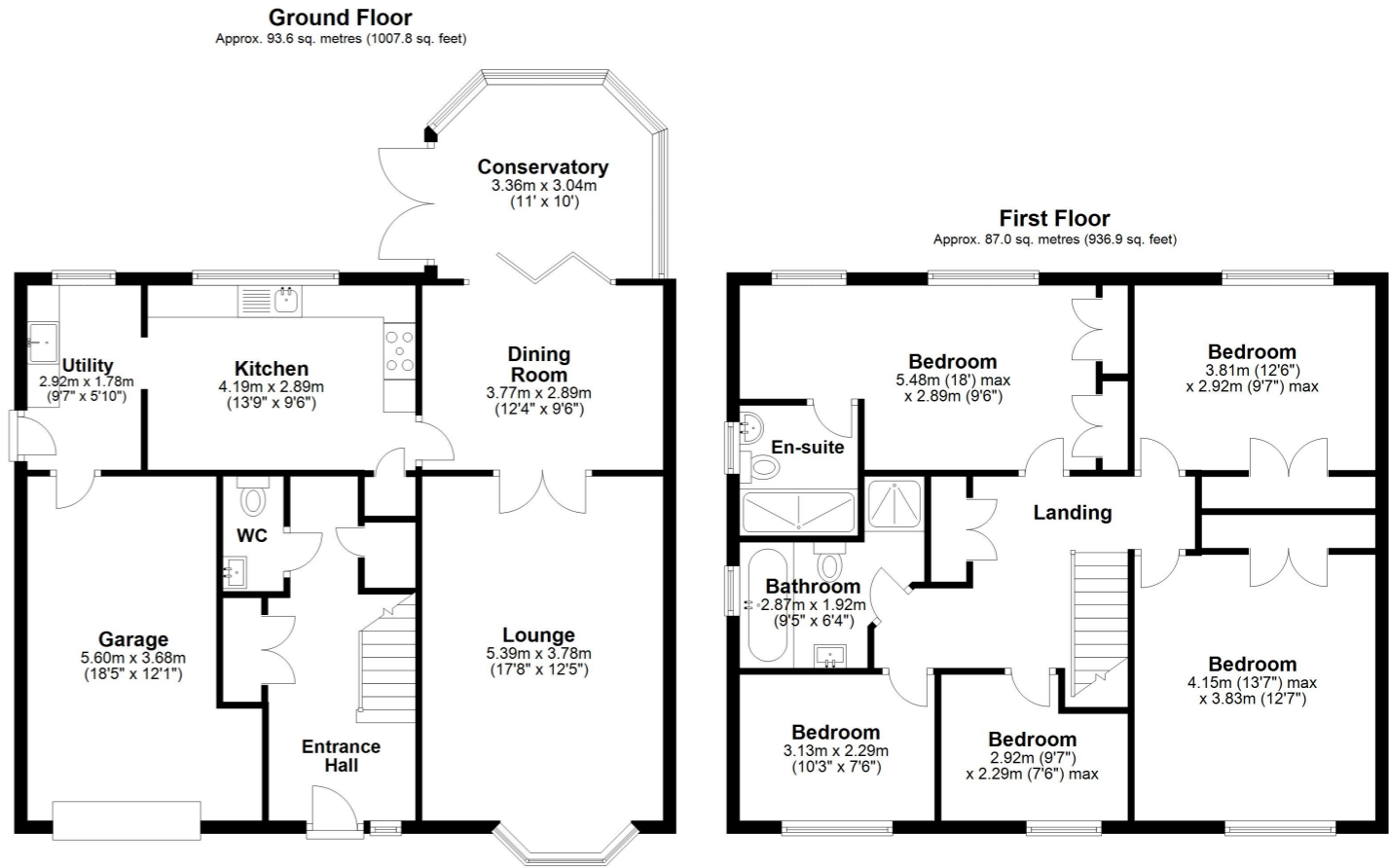
9' 7" x 7' 6" (2.92m x 2.29m)

**Garage**

18' 5" x 12' 1" (5.61m x 3.68m)

**Off Road Parking**

**Rear Garden**



Total area: approx. 180.7 sq. metres (1944.7 sq. feet)

Whilst every attempt has been made to ensure the accuracy of the floor plan contained here, measurements of doors, windows, rooms and any other items are approximate and no responsibility is taken for any error, omission or mis-statement. This plan is for illustrative purposes only and should be used as such by any prospective purchaser. Plan produced using PlanUp.

