



Day & Co
ESTATE AGENTS

28 Cavendish Street
Keighley
BD21 3RG



1 Greystones Drive, Keighley,
West Yorkshire, BD22 7AL

£149,995

T: 01535 664609

W: www.dayandcoestateagents.co.uk

E: keighley@dayandcoestateagents.co.uk

- SEMI-DETACHED HOUSE
 - LARGE REAR GARDEN
 - SOLAR PANELS
- THREE BEDROOMS
 - GAS CENTRAL HEATING & DOUBLE GLAZING
 - EPC RATING D

SUMMARY

** SEMI-DETACHED HOUSE,THREE BEDROOMS, CONSERVATORY, LARGE REAR GARDEN, GAS CENTRAL HEATING, DOUBLE GLAZING, SOLAR PANELS, EPC RATING D **

FULL DESCRIPTION

Of interest to a variety of buyers is this three bedroom semi-detached property which is handily placed for access to local schools. The accommodation briefly comprises-

Ground Floor: Entrance Hall, Kitchen which has a range of modern base and wall mounted units, range style cooker, built in storage cupboard, double glazed windows to the rear. There is a separate utility room with entrance door to the front and being open plan through to a good sized conservatory which is double glazed and has a glazed roof. The lounge has a wood burning stove and double glazed windows to the front.

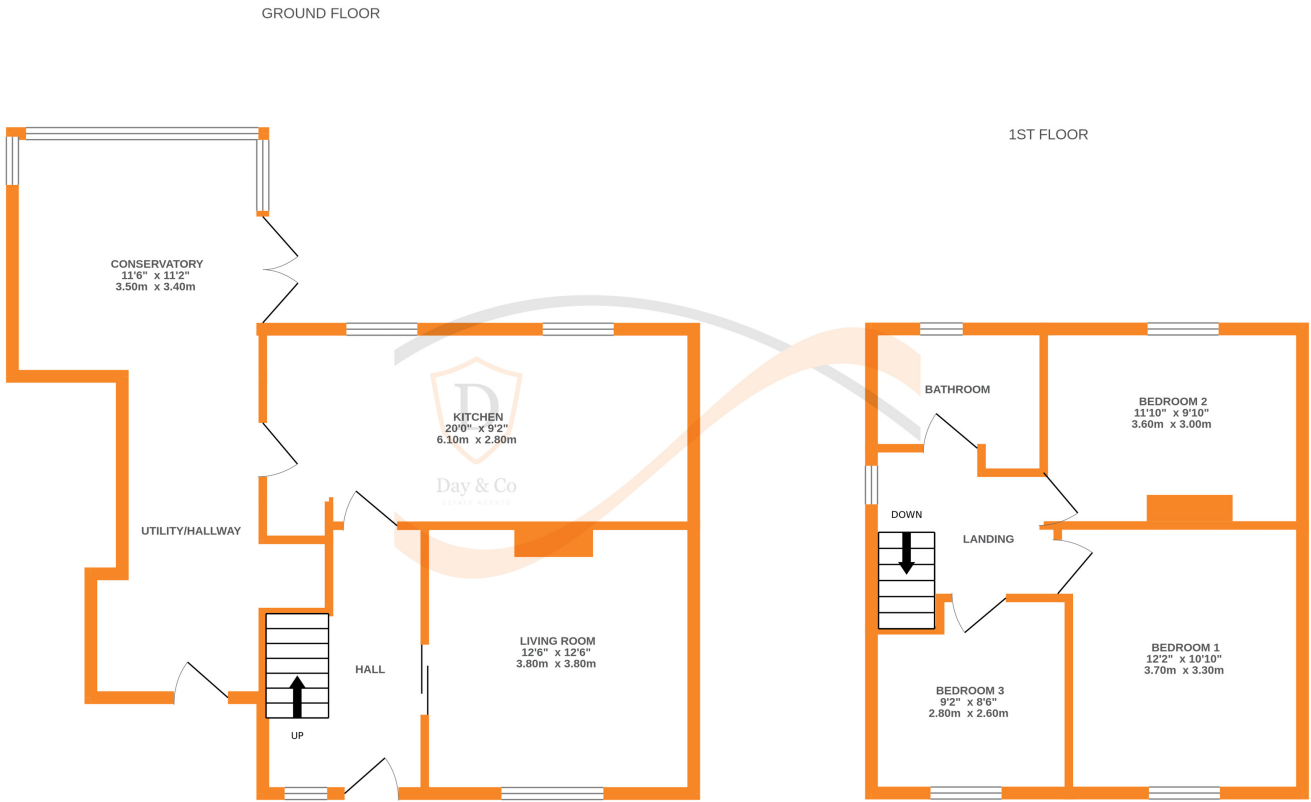
First Floor : Three bedrooms and a Bathroom which has a bath, WC, wash hand basin, double glazed windows to the rear.

Gas Central Heating, Double Glazing, Solar Panels.

Externally there is a good size rear garden with a spacious summerhouse. There is a further front garden.

Viewing advised to fully appreciate.

EPC rating is D.



Whilst every attempt has been made to ensure the accuracy of the floorplan contained here, measurements of doors, windows, rooms and any other items are approximate and no responsibility is taken for any error, omission or mis-statement. This plan is for illustrative purposes only and should be used as such by any prospective purchaser. The services, systems and appliances shown have not been tested and no guarantee as to their operability or efficiency can be given.
Made with Metropix ©2025