

The Grove

Codford, BA12 0NT

COOPER
AND
TANNER



£275,000 Freehold

This three bedroom end of terrace house is set in the sought after village of Codford in the Wylde Valley. The property has been updated by its current owners and is beautifully presented. It benefits from an added utility and a cloakroom. It offers well planned living family accommodation with a light sitting room with French doors to the rear garden. In addition there is an old coal shed that adjoins the house which could easily be converted. It boasts good sized gardens to the rear and side.

The Grove

Codford

BA12 0NT

 3  1  1 EPC D

£275,000 Freehold

DESCRIPTION

This three bedroom end of terrace house is set in the sought after village of Codford in the Wyllye Valley. The property has been updated by its current owners and is beautifully presented. It benefits from an added utility and a cloakroom. It offers well planned living family accommodation with a light sitting room with French doors to the rear garden. In addition there is an old coal shed that adjoins the house which could easily be converted. It boasts good sized gardens to the rear and side. In brief the accommodation comprises entrance porch, pleasant sitting room with dual aspect, a quirky kitchen with an island, fitted with wall and base units. Utility room and cloakroom. A door leads to an undercover area with access to the old coal shed ideal for converting. Leading to the first floor there is a spacious landing with door leading to three good sized bedrooms and a family bathroom.

OUTSIDE

You approach the property over a path that leads to the newly built entrance porch and there are borders to either side with picket fencing at the front with various plants. The garden at the rear is a great size and is privately enclosed with fencing. There is a decked seating area with planters either side and steps and a gate leads to a lawned area with a patio at the end with screening for seating. There are borders with plants and shrubs. Picket fencing and a gate leads to another area of a garden which is also a good size and is currently used as a vegetable plot with raised beds. There is a brick outbuilding which can be converted. There is a gated access to the side.

COUNCIL TAX

Band 'C'

LOCATION

The Wyllye Valley village of Codford is extremely well provided and local amenities include Post Office and village supermarket, garage, village school, doctors surgery, social club and The Woolstore Theatre. Warminster lies approx 8 miles distant and offers a wide range of shopping and leisure facilities to include library, sports centre, swimming pool, schools, churches, doctors' and dentists' surgeries, hospital and post office. Warminster also benefits from a main line railway station to London Waterloo whilst the nearby A303 provides excellent road links to London to the east and Exeter to the west. Local attractions include Longleat House and Safari Park, Shearwater Lake, Stourhead and Salisbury Plain.





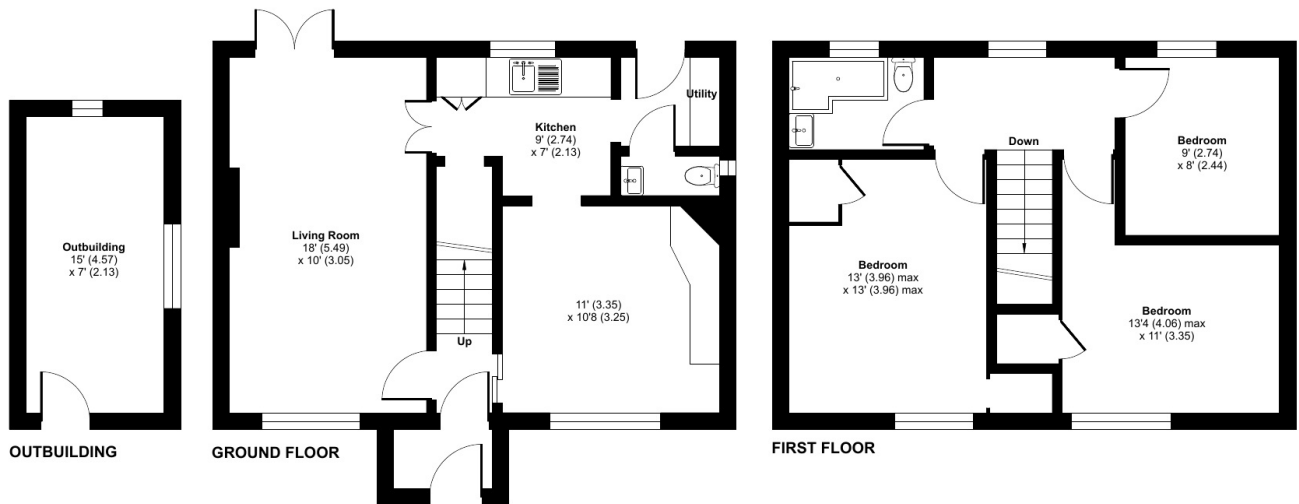
The Grove, Codford, Warminster, BA12

Approximate Area = 913 sq ft / 84.8 sq m

Outbuilding = 105 sq ft / 9.7 sq m

Total = 1018 sq ft / 94.5 sq m

For identification only - Not to scale



Floor plan produced in accordance with RICS Property Measurement Standards incorporating International Property Measurement Standards (IPMS2 Residential). © nitchecom 2024. Produced for Cooper and Tanner. REF: 1114897

WARMINSTER OFFICE

Telephone 01985 215579

48-50, Market Place, Warminster, Wiltshire BA12 9AN

warminster@cooperandtanner.co.uk

**COOPER
AND
TANNER**

Important Notice: These particulars are set out as a general outline only for the guidance of intended purchasers and do not constitute, nor constitute part of, an offer or contract. All descriptions, dimensions, reference to condition and necessary permissions for use and occupation, warranties and other details are given without responsibility and any intending purchasers should not rely on the measurements or representations of fact but must satisfy themselves by inspection or otherwise as to the correctness of each of them.

