

115 Old Folkestone Road

AYCLIFFE, Dover
CT17 9HD

£190,000 FREEHOLD

Draft Details...FOR SALE THROUH BURNAP + ABEL...Price Range £190,000 - £200,000 | A Fantastic Two-Bedroom Terraced Home in Highly Sought-After Aycliffe, Dover | Discover this wonderful two-bedroom terraced home, perfectly positioned in the desirable area of Aycliffe, Dover. Offering a blend of modern comfort and practicality, this property is an excellent choice for first-time buyers, buy-to-let investors, or those looking to downsize. Inside, the accommodation features a welcoming lounge, a stylish modern kitchen, a useful utility room, two well-proportioned bedrooms, and a bathroom. The home benefits from modern double glazing and gas central heating, ensuring comfort all year round. To the rear, a sunny garden provides the ideal space to relax or entertain. Located in a popular residential area, the property is within close proximity to local schools, shops, and everyday amenities, making it a convenient and appealing place to call home. This is a fantastic opportunity to secure a beautifully presented home in one of Dover’s most sought-after locations. For your chance to view call Burnap + Abel on 01304 279107.



Lounge/Diner

17' 9" x 8' 10" (5.41m x 2.69m)

Kitchen

13' 9" x 9' 7" (4.19m x 2.92m)

Utility

6' 11" x 4' 10" (2.11m x 1.47m)

Bedroom One

12' 0" x 8' 6" (3.66m x 2.59m)

Bedroom Two

8' 8" x 14' 11" (2.64m x 4.55m)

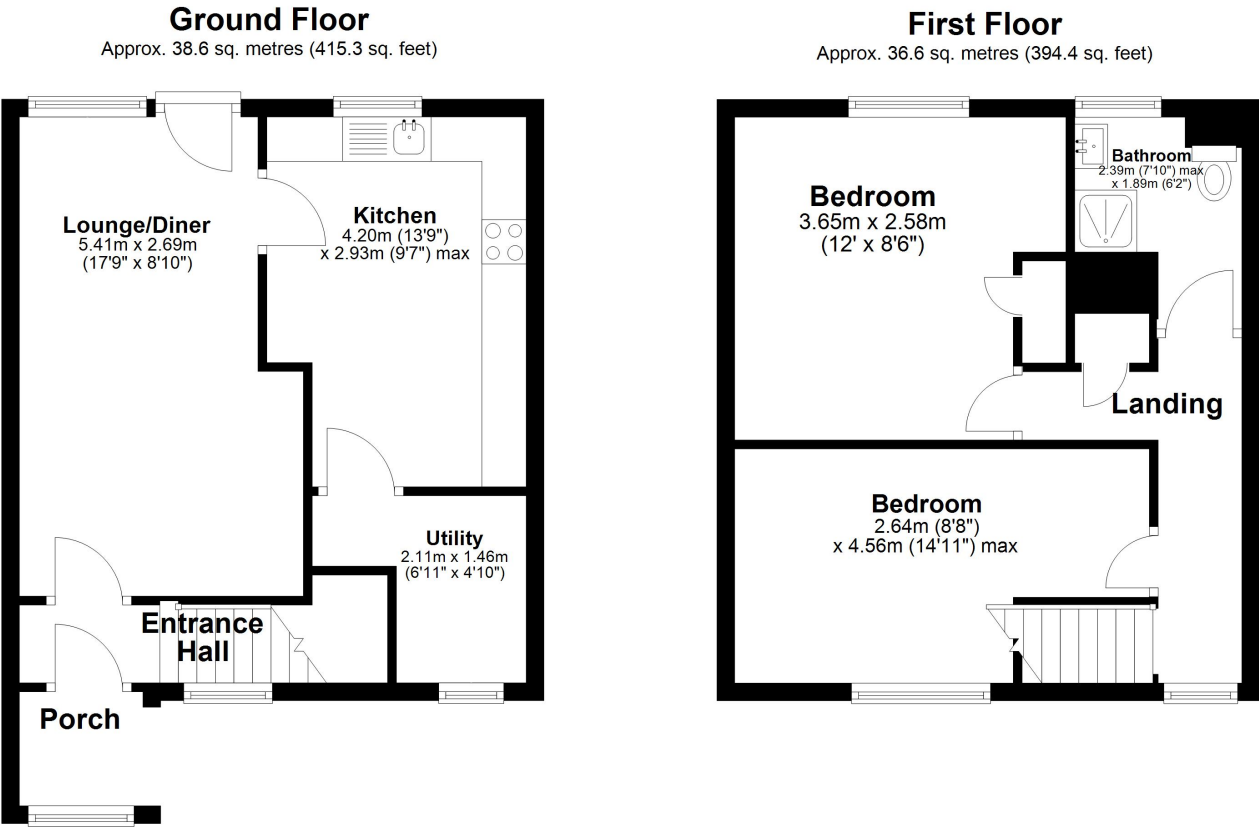
Bathroom

7' 10" x 6' 2" (2.39m x 1.88m)

Garden

Area Information

Located within a short five minute walk to the beach and easy reach of the centre of Dover and newly opened St James' Retail Park. The property is on the main bus route and the nearby mainline railway station provides quick access to London St Pancras International via HS1 and lines connecting to Kent towns. There are also shops located a short drive away and several primary and secondary schools are dotted around the town. The Port and iconic White Cliffs are a short drive as is the medieval castle and the North Downs Way national walk.



Total area: approx. 75.2 sq. metres (809.6 sq. feet)

Whilst every attempt has been made to ensure the accuracy of the floorplan contained here, measurements of doors, windows, rooms and any other items are approximate and no responsibility is taken for any error, omission or mis-statement. This plan is for lustrative purposes only and should be used as such by any prospective purchaser. The services, systems and appliances shown have not been tested and no guarantee as to their operability or efficiency can be given.
Plan produced using PlanUp.

