



**REDUCED**

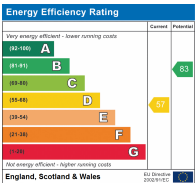
## Wood Close, London NW9 7NR

PEACEFUL LIVING!!!

An extended 4 bedroom terraced property located in a quiet cul-de-sac away from the hustle and bustle of normal day to day life. This home comes with two bathrooms, a decent-sized kitchen/diner, through lounge and off street parking. Church Lane, which offers local amenities, shops, bus routes to Wembley Park Station (Metropolitan Line) and Kingsbury Station (Jubilee Line), is only a short walk away. For those commuting by vehicle, a short drive will provide access to Edgware Road, M1 motorway, North Circular Road and West Hendon Broadway. This property is currently tenanted until October 2023 for £2,000 pcm and is being sold on a chain-free basis, with or without the tenant.

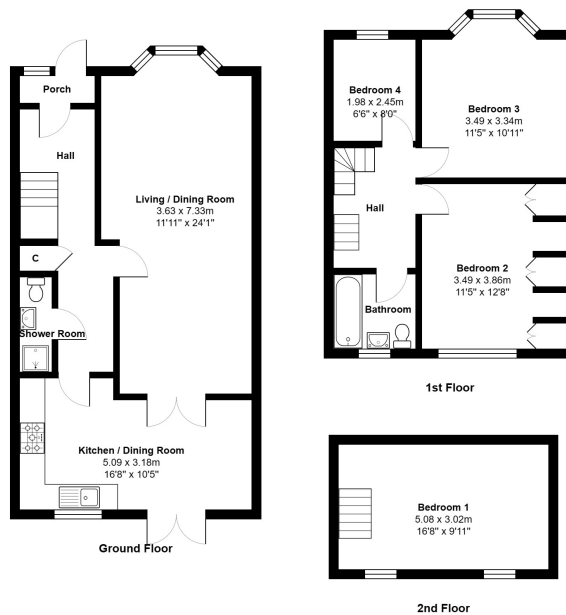
Call the vendor's Sole Agent, Mischa & Co, to book your tour today!!

Council Tax Band D (Brent) & EPC rating D (57).



**£599,950 Freehold**

## Floorplan



Total Area: 118.0 m<sup>2</sup> ... 1270 ft<sup>2</sup>

All measurements are approximate and for display purposes only

NB: Please note that all fittings, kitchen appliances and heating systems have not been tested by Mishca & Co Sales & Lettings. Whilst we endeavour to make our sales details accurate and reliable. Room sizes should not be relied upon for carpets and furnishings. If there is any point, which is of particular important to you, please contact our office and we will be pleased to verify any information for you. Do so particularly if contemplating travelling some distance to view this property.