



Greenside Court, Brookfield Avenue, Ramsey, Isle of Man. IM8 2AN

Manxmove are delighted to offer for sale this beautifully presented spacious two double bedroom apartment with two en-suite bathrooms, it also takes advantage overlooking the stunning and highly regarded Ramsey Golf Club and the stunning greens. Greenside court offers a stunning vista.



£389,950

PROPERTY DESCRIPTION

This modern apartment offers a breathtaking vista over the lush, expansive greens of Ramsey Golf Club, on the Isle of Man providing a serene and picturesque backdrop for everyday living. The open plan design seamlessly integrates the living, entertaining, and kitchen area, creating a spacious and inviting environment perfect for relaxing. A sunroom extends the living space, offering a bright, airy spot to enjoy the scenic views year-round while bringing in abundant natural light. The stylish interior is thoughtfully appointed, emphasizing comfort and contemporary elegance, with large windows framing the stunning vistas of the rolling greens and Sunsets.

Located in Greenside Court, this beautifully presented residence features two generous double bedrooms, each with its own en-suite bathroom, enhancing privacy and convenience. The layout maximizes space and functionality, making it an ideal home for those seeking modern living with impressive outdoor outlooks. Manxmove is delighted to present this exceptional apartment, which combines luxurious comfort with a premier location overlooking the highly regarded Golf Club and its pristine greens, offering residents an idyllic and tranquil lifestyle in a sought-after setting.

Garaging for one car with useful store cupboard. Ideal Lock and leave.

THINKING OF SELLING? We are professionally qualified estate agents and licensed members of the National Association of Estate Agents (NAEA). We provide free of charge walk through valuations based on properties that have sold so the valuation is far more accurate and realistic in this buoyant market. We will also advise and listen to your thoughts and plans. Give us a call on 01624 61 99 66 or email us at info@manxmove.im

DISCLAIMER Whilst Manxmove Ltd believe that these details are correct, neither Manxmove Ltd or their clients guarantee their accuracy in any way. Consequently, these details are not to be used to form part of any legally binding contract. Prospective purchasers or tenants are advised to visit this property to satisfy themselves as to the correctness of these details. Please note, we use wide angle camera lenses in order to show as much of each room as possible. This is not intended to mislead any prospective purchasers or tenants in any way and an honest verbal description is always available prior to viewing if required.

FEATURES

- Stunning Views of the Greens
- Off road parking plus Garage
- Views of Sky Hill in the distance
- Two Double Bedrooms & En-Suite Bathrooms
- Modern Kitchen with Appliances
- Garage Store
- Delightful Sunsets
- Close to the amenities of Royal Ramsey Town
- Sorry No Pets Allowed in Building



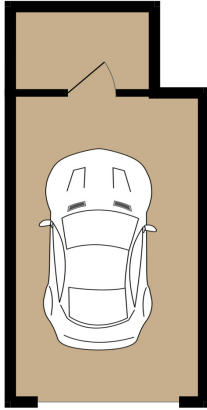
Property Images



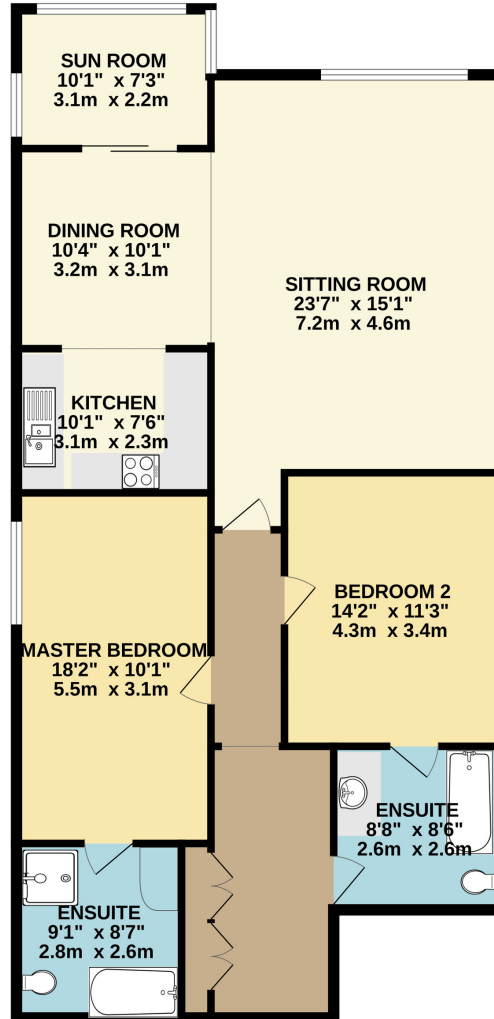
FLOORPLAN



BASEMENT
195 sq.ft. (18.1 sq.m.) approx.



SECOND FLOOR
1217 sq.ft. (113.1 sq.m.) approx.



SPACIOUS 2 BED APARTMENT OVERLOOKING THE RAMSEY GOLF COURSE

TOTAL FLOOR AREA : 1412 sq.ft. (131.2 sq.m.) approx.

Whilst every attempt has been made to ensure the accuracy of the floorplan contained here, measurements of doors, windows, rooms and any other items are approximate and no responsibility is taken for any error, omission or mis-statement. This plan is for illustrative purposes only and should be used as such by any prospective purchaser. The services, systems and appliances shown have not been tested and no guarantee as to their operability or efficiency can be given.
Made with Metroplex ©2025



DISCLAIMER: Whilst Manxmove Ltd believe that these details are correct, neither Manxmove Ltd or their clients guarantee their accuracy in any way. Consequently, these details are not to be used to form part of any legally binding contract. Prospective purchasers or tenants are advised to visit this property to satisfy themselves as to the correctness of these details. Please note, we use wide angle camera lenses in order to show as much of each room as possible. This is not intended to mislead any prospective purchasers or tenants in any way and an honest verbal description is always available prior to viewing if required.

Manxmove Estate Agents - Douglas
Victoria Road, Douglas, IM2 4HD
01624 619966
info@manxmove.im