

3 Bedroom(s), Semi-Detached House,

198 Harrowden Road, Wheatley, Doncaster,



- 3D Virtual Tour Available
- Lovely and Spacious Semi Detached Family Home
- Three Bedrooms
- Garage and Driveway Allowing for Off Road Parking
- Popular Location and Close to Amenities and The Hospital

- No Chain
- Open Plan Kitchen and Dining Room
- Family Bathroom
- Mature Rear Enclosed Garden

**Offers in Region of
£165,000
For Sale**

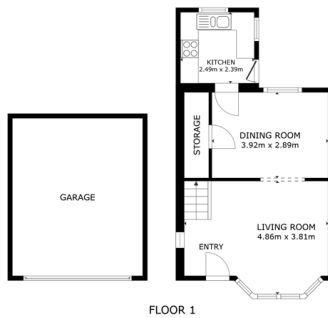
Book your viewing today Tel: 01302 247754

Owner's View

3D Virtual Tour Available- Take a closer, more detailed look around via our 3D Virtual Tour! Don't forget that you can also check availability for viewings online via a visit to our website...

Ground Floor

Floor Plan



GROSS INTERNAL AREA
FLOOR 1: 38.2 m² FLOOR 2: 23.0 m²
EXCLUDED AREAS: ENTRY 2.1 m² GARAGE 23.3 m²
TOTAL: 65.6 m²



Kitchen





We make it happen.

Tel: 01302 247754 Email: info@thepropertyhive.co.uk Web: www.thepropertyhive.co.uk



We make it happen.

Tel: 01302 247754 Email: info@thepropertyhive.co.uk Web: www.thepropertyhive.co.uk

Energy Performance Certificate