



Wilkinson Road, Kempston, Bedford MK42 7GP





Wilkinson Road
Kempston
Bedford
MK42 7GP

Guide Price £500,000

A truly stunning four double bedroom detached home which has been upgraded and improved by the current seller. Two en-suite bathrooms, refitted main bathroom, refitted kitchen and utility room. Landscaped rear garden. Re-Decorated.

- Upgraded & Improved Throughout
- Re-Fitted Kitchen with built in appliances
- Re-Fitted Utility Room
- Beautiful Re-Decorated Lounge
- Main Bathroom Re-Fitted
- Four Double Bedrooms
- Two En-suite Bathrooms
- Landscaped Rear Garden
- Garage & Driveway



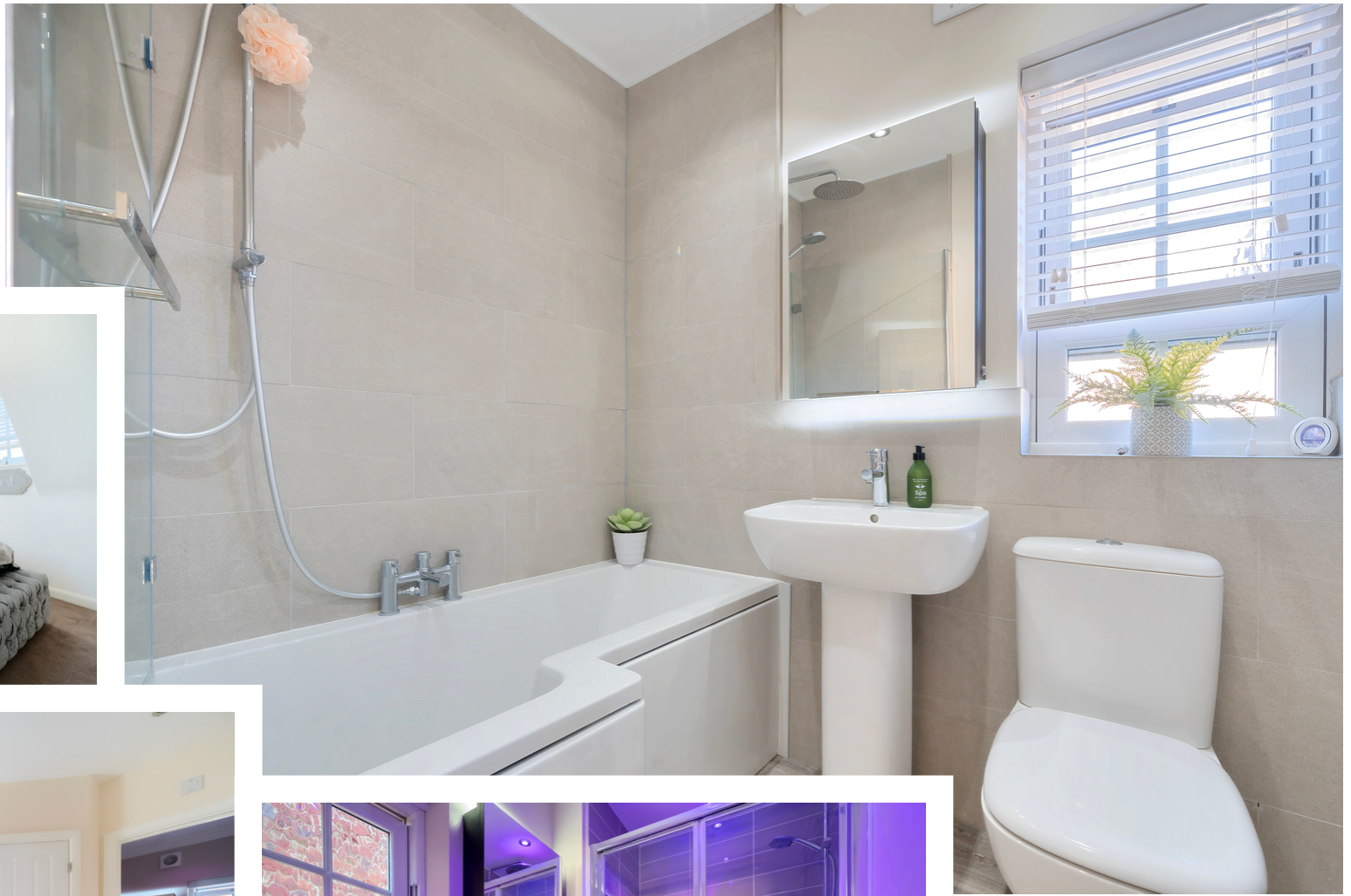
- Council Tax Band E
- Energy Efficiency Rating





A much improved four double bedroom home set within a modern development on the outskirts of Kempston. Entering the property into the entrance hall you have stairs to the first floor. The lounge is found to the left of the property and runs front to back, having a bay window to the front which allows the natural light to flow in. The rear landscaped garden can be accessed from the lounge with doors onto the patio. The kitchen/diner is a stunning room, the dining area is a light, bright room due to two good size windows. The kitchen area has been refitted beautifully within the last two years, ample storage cupboards, laminate worksurfaces with matching splash backs. Neff built in over with built in microwave. Integrated Bosch dishwasher. Induction hob with extractor hood. Ceramic sink. The utility room has also been re-fitted and leads off the kitchen. Again with a good selection of units, plumbing for washing machine and access out to the rear garden. The cloakroom is found next to the stairs, this has been re-fitted and re-decorated. Upstairs you have a good sized landing. The main bedroom has a dressing area with floor to ceiling wardrobes and en-suite with double shower, low level wc and wash hand basin. The other side of the landing you have another double bedroom. The main bathroom is on this level and has been re-fitted with rainfall shower over the bath, low level WC and wash hand basin. The second floor has two good sized bedrooms. The shower room like the rest of the house has been decorated and improved. The outside rear space has been landscaped by the current seller and a personal door has been put into the garage. The garden is mainly laid to lawn with recent laid decking, enclosed boundaries with gated access to the driveway. The driveway allows off road parking and access to the garage.





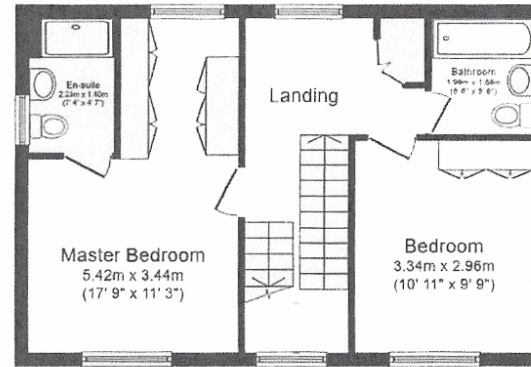


Wilkinson Road is an ideal location, walking distance to local primary school, shops and restaurants. Within minutes drive of the A421, A428 and connecting M1 and A1 it is an ideal commuter area.

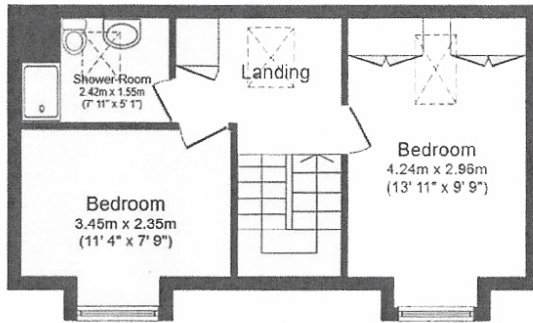




Ground Floor



First Floor



Second Floor

Total floor area 128.0 sq. m. (1,378 sq. ft.) approx

This plan is for illustration purposes only and may not be representative of the property. Plan not to scale.



01234 856684 | sales@waldens.co.uk | www.waldens.co.uk | 188-190 Bedford Road, Bedford, MK42 8BL

Waldens Estate Agents Limited for themselves and for the vendors or lesser of this property whose agents are to give notice that the particulars are produced in good faith and are set out as a general guide only and do not constitute any part of a contract and no person in the employment of Waldens Estate Agents Limited has any authority to make or give any representation or warranty or relation to this property.

