



- No Onward Chain
- Detached Bungalow
- Perfect For Those Looking To Downsize
- Two Double Bedrooms
- Modern Kitchen
- Generous Lounge/Diner
- En-Suite And Family Bathroom
- Private Rear Garden, Garage And Driveway

Larks Rise, Halstead, Essex. CO9 2HB.

Nestled in a quiet and sought-after road, 'Lark Rise' offers a wonderful opportunity for those looking to downsize without compromising on space or comfort. This well-presented two double-bedroom detached bungalow is chain free and ready to move into.



Property Details.

Room Measurements

Entrance Hall

WC



Lounge/Diner



4.06m x 6.84m (13'
4" x 22' 5")



Inner Hall

Kitchen



Property Details.

5.29m x 2.97m (17' 4" x 9' 9")

Bedroom One



3.73m x 2.99m (12' 3" x 9' 10")

En-Suite



Bedroom Two



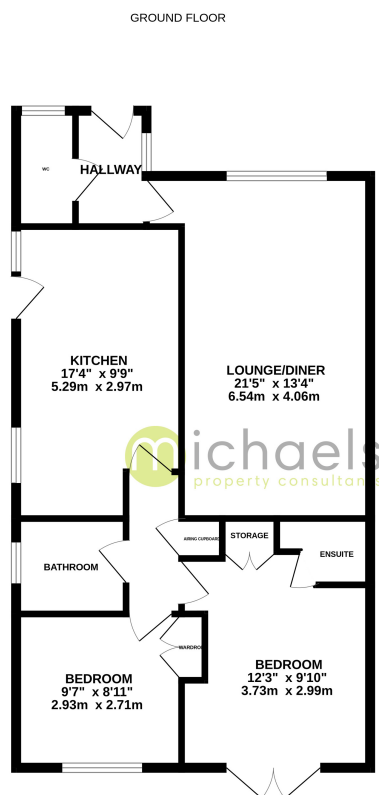
2.71m x 2.23m (8' 11" x 7' 4")

Bathroom



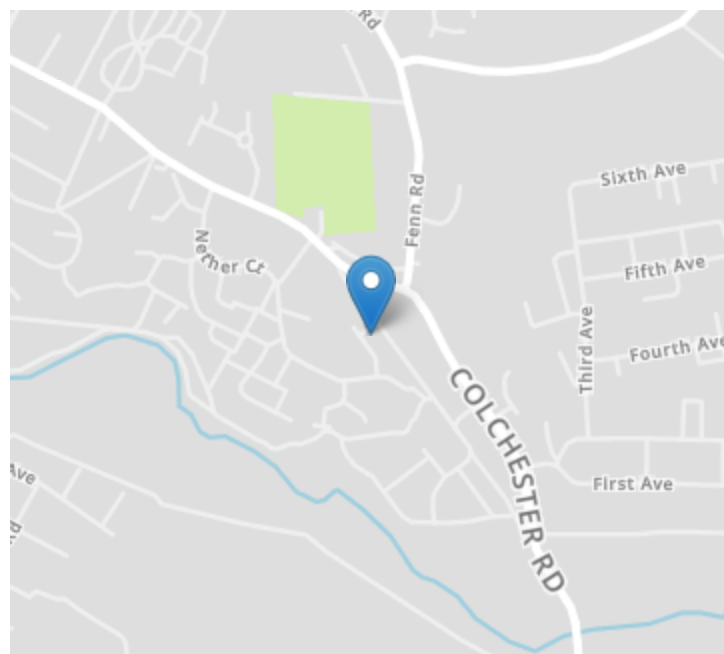
Property Details.

Floorplans



Whilst every attempt has been made to ensure the accuracy of the floorplan contained here, measurements of doors, windows, rooms and any other items are approximate and no responsibility is taken for any error, omission or misstatement. This plan is for illustrative purposes only and should be used as such by any prospective purchaser. The services, systems and appliances shown have not been tested and no guarantee as to their operability or efficiency can be given.
Made with Metropix G2025

Location



Energy Ratings

We have not carried out a structural survey and the services, appliances and specific fittings have not been tested. All photographs, measurements, floor plans and distances referred to are given as a guide only and should not be relied upon for the purchase of carpets or any other fixtures or fittings. Gardens, roof terraces, balconies and communal gardens as well as tenure and lease details cannot have their accuracy guaranteed for intending purchasers. Lease details, service ground rent (where applicable) are given as a guide only and should be checked and confirmed by your solicitor prior to exchange of contracts.