

326 Southborough Lane, Bromley, Kent, BR2 8AA

Property Images

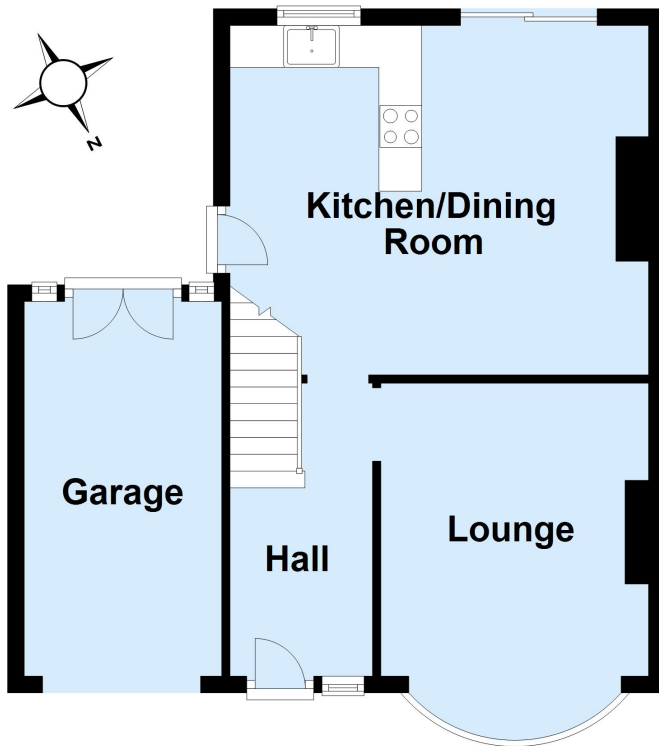






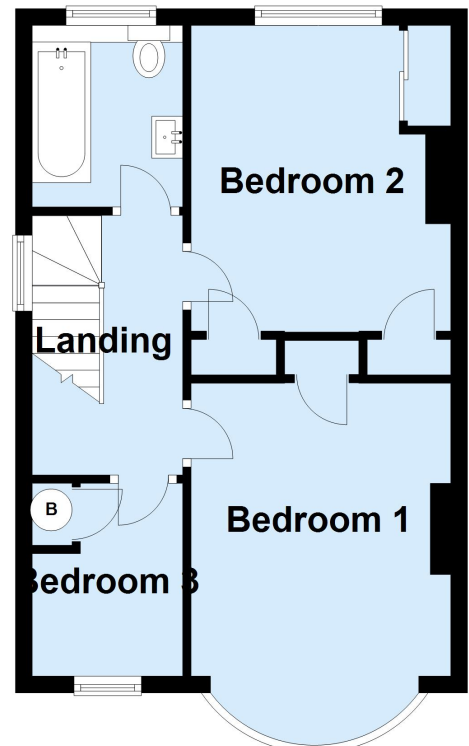
Ground Floor

Approx. 50.4 sq. metres (542.0 sq. feet)



First Floor

Approx. 39.4 sq. metres (423.8 sq. feet)



Total area: approx. 89.7 sq. metres (965.8 sq. feet)

This plan is for general layout guidance and may not be to scale.
Plan produced using PlanUp.