



9 Whittle Court,
Knowlhill, Milton Keynes, MK5 8FT

Tel: 01908 231 551



mail@elevationstateagents.com



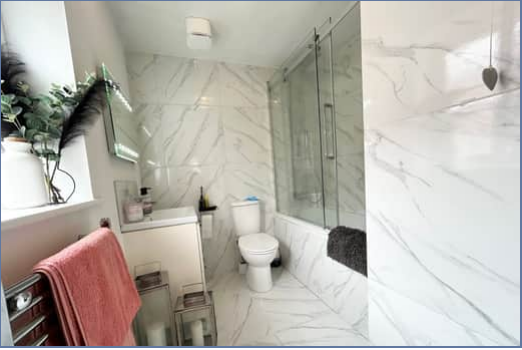
**3 Tiree Court, Bletchley, Milton Keynes,
Buckinghamshire, MK3 5FB**

£93,000 Leasehold

- Two Parking spaces with car port
- Two double bedrooms
- Dressing room to master
- Refitted bathroom
- 30% shared ownership
- £3,000 Fixtures & Fittings
- EPC Rating



See our full selection of properties online at www.elevationstateagents.com



A stunning Two double bedroom detached coach house for sale on a 30% share with BPHA housing association.

Newton Leys is a district that covers the southern tip of Bletchley and is split between the Borough of Milton Keynes and Aylesbury Vale. Conveniently located next to the A4146 and A5, it gives easy access to Milton Keynes, Leighton Buzzard and the M1. You have a choice of either Bletchley or Leighton Buzzard Train Stations which both offer services directly into London Euston.

Newton Leys Primary School opened in 2016 and accepts children from age 3 (nursery) to age 11 (Year 6). Many parents take advantage of the Grammar Schools in Aylesbury for Secondary education being only approximately 11 miles away.

In 2017 Newton Leys District Centre opened providing local conveniences such as a Costa, Chinese Takeaway, Fish and Chip Shop, Dry Cleaners, Hair Salon and a 8000 sq ft Asda. At the end of April 2019 the Turing Key pub opened its doors and has already cemented itself as the heart of the community. It is in good company as there also numerous village pubs within a few miles such as The Three Locks at Stoke Hammond, The Crooked Billet at Newton Longville and The Betsey Wynne at Swanbourne.

Monthly rent - £385.11

Monthly Service Charge - £13.74

Remaining lease - 84 Years Left

Disclaimer

Whilst we have endeavoured to prepare our sales particulars accurately none of the services, appliances or equipment have been tested. A buyer should satisfy themselves on such matters prior to purchase. Any measurements or distances mentioned in these particulars are for guide reference only. If such particulars are fundamental to a purchase, buyers should rely on their own enquiries. All enquiries should be directed to Elevation Estate Agents in the first instance.