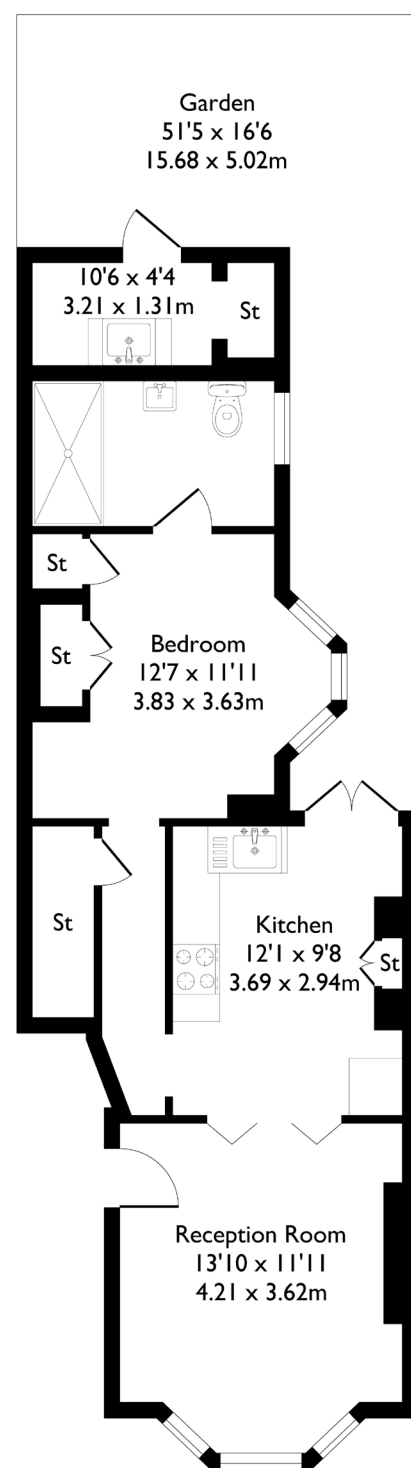
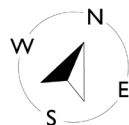


Elthorne Avenue, London, W7

Approximate Floor Area = 53.8 sq m / 580 sq ft



Ground Floor



1 BEDROOM FLAT

Elthorne Avenue, W7

£425,000

Welcome to this beautifully presented one-bedroom, one-bath-room garden flat.

This stylish home offers a modern interior throughout, beginning with an open-plan kitchen and living area that flows seamlessly onto a well-maintained private garden with convenient side access — perfect for relaxing or entertaining.

FEATURES

- One Bedroom
- One Bathroom
- Open Kitchen/Living Space
- Private Garden
- Potential to Extend (STPP)
- Boston Manor/Hanwell Station (Elizabeth Line)
- Oaklands Primary School/Elthorne Park High School
- EPC Rating D



1 BEDROOM FLAT

Elthorne Avenue, W7

Off the hallway, you'll find a spacious double bedroom with an en-suite bathroom featuring underfloor heating, adding a touch of comfort and luxury.

The property is ideally located just a 15-minute walk from Boston Manor Station (Piccadilly Line) and a further 5 minutes from Hanwell Station (Elizabeth Line), providing excellent transport links. It also falls within the catchment area for Oaklands Primary School and Elthorne Park High School.

