

Flat 6 9 Grove Park Road, Weston-Super-Mare, Somerset. BS23
2LW

£190,000 Leasehold

FOR SALE



www.housefox.co.uk



01934 314242
01275 404601
01278 557700
sales@housefox.co.uk

PROPERTY DESCRIPTION

HOUSE FOX ESTATE AGENTS PRESENTS.....A large first floor apartment close to Grove Park, and within 5-10 minute walk of the sea front, shops, cafes, restaurants, bars and beach.

The apartment offers great size rooms to include hallway, 19ft x 14ft living room with feature bay window, 2 double bedrooms, 14ft kitchen, nice size bathroom with bath and separate shower cubicle, plus gas central heating (boiler replaced in 2023), double glazing and communal parking

So if you want to be set on Weston Hillside, yet close to the amenities, then look no further and book into view this large first floor apartment by calling House Fox Estate Agents today

FEATURES

- First floor apartment
- Lovely size rooms
- 19ft living room with feature bay window
- 2 double bedrooms
- 14ft kitchen
- Close to Grove Park
- Gas central heating (boiler replaced in 2023)
- 10 minute walk to the sea front
- Communal parking
- EPC-C



ROOM DESCRIPTIONS

Communal front door to communal hallway:

Security entry phone system

Communal hallway:

Stairs to the first floor, door to the apartment

Hallway:

Doors to all rooms

Living room:

6.01m x 4.50m (19' 9" x 14' 9") Feature double glazed bay window, radiator

Kitchen:

4.56m x 2.41m (15' 0" x 7' 11") Sink unit, floor and wall units, built in oven and hob, double glazed window, plumbing for washing machine

Bedroom 1:

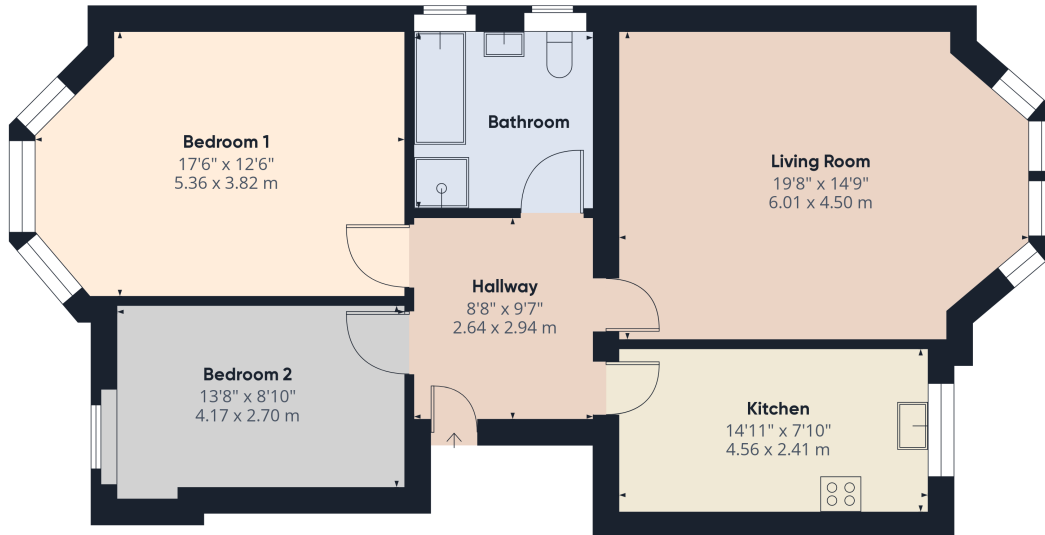
5.36m x 3.82m (17' 7" x 12' 6") Radiator, double glazed window

Bedroom 2:

4.17m x 2.70m (13' 8" x 8' 10") Radiator, double glazed window



FLOORPLAN & EPC



Approximate total area⁽¹⁾
884.9 ft²
82.21 m²

(1) Excluding balconies and terraces

While every attempt has been made to ensure accuracy, all measurements are approximate, not to scale. This floor plan is for illustrative purposes only.
Calculations are based on RICS IPMS 3C standard.

GIRAFFE360

