



Asking Price

£219,950

Freehold

KING JOHN CLOSE, BOURNEMOUTH BH11 9TX



- ◆ SEMI DETACHED BUNGALOW
- ◆ ONE BEDROOM
- ◆ SCOPE TO CREATE SECOND BEDROOM
- ◆ GAS FIRED HEATING

A practical, one bedroom, semi-detached bungalow with scope to be made in to a two bedroom home with courtyard garden and casual off road parking.

Property Description

The home sits within a quiet cul de sac style road and the accommodation comprises of a living room, kitchen, double bedroom and family bathroom which is currently purposed as a wet room. There are some generous storage cupboards and given the layout of the accommodation, it would be very simple to adapt the layout to create a second bedroom. The property also benefits from gas heating and double glazing and there is casual off road parking immediately outside the property.

Gardens and Grounds

A wood-built gate gives access to the courtyard stable garden where there is a grass area and patio.

Location

Bournemouth is a large coastal resort town with award-winning beaches on the south coast of England. To the east lies the famous Jurassic Coast – a World Heritage Site. Bournemouth has excellent transport connections via rail, bus, road or sea. The town has historic tropical gardens, golden sands and surfing, panoramic views from the clifftops and a bustling town centre. There are plenty of indoor and outdoor attractions including museums, galleries and many cosmopolitan restaurants, cafes and bars. Bournemouth's climate and location has made it a popular destination for visitors. The town is also a regional centre of business and home of the Bournemouth International Centre (BIC).



Size: 447 sq ft (41.5 sq m)

Heating: Gas fired heating (Vented) serviced annually

Glazing: Double glazed

Parking: Casual Off road

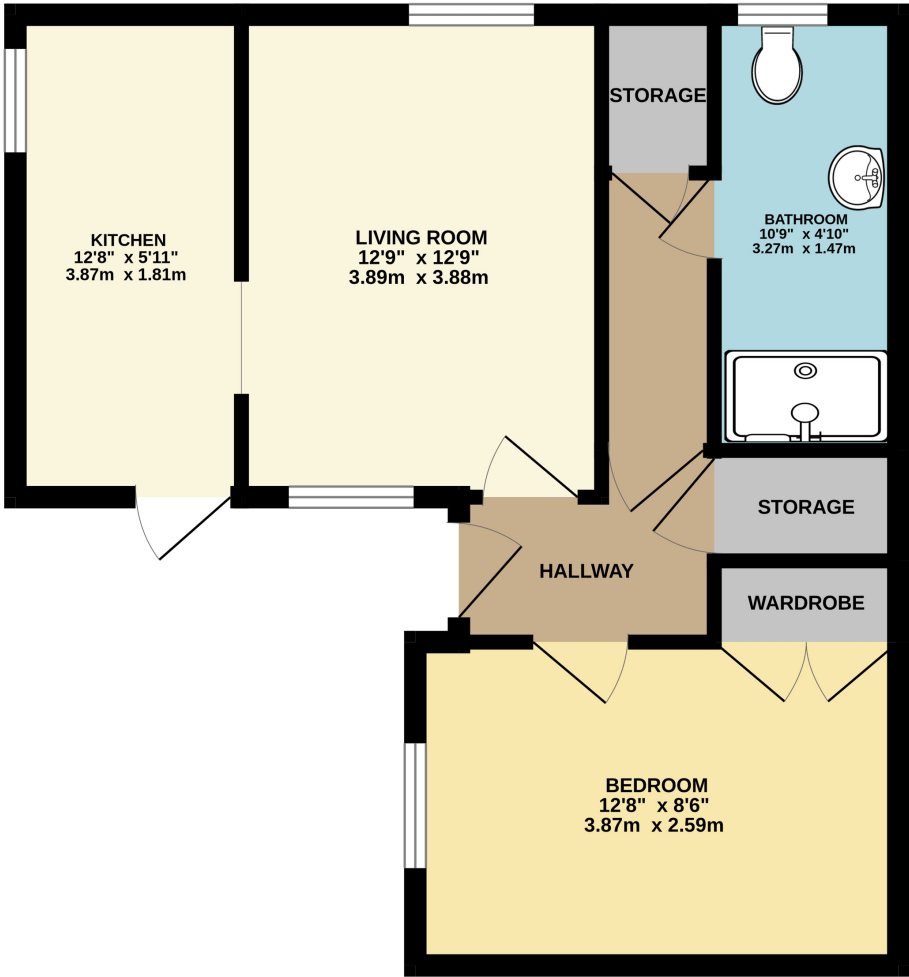
Garden: South facing

Main Services: Electric, water, drains, telephone

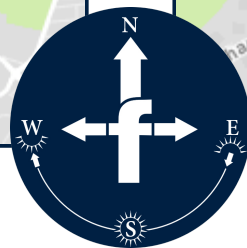
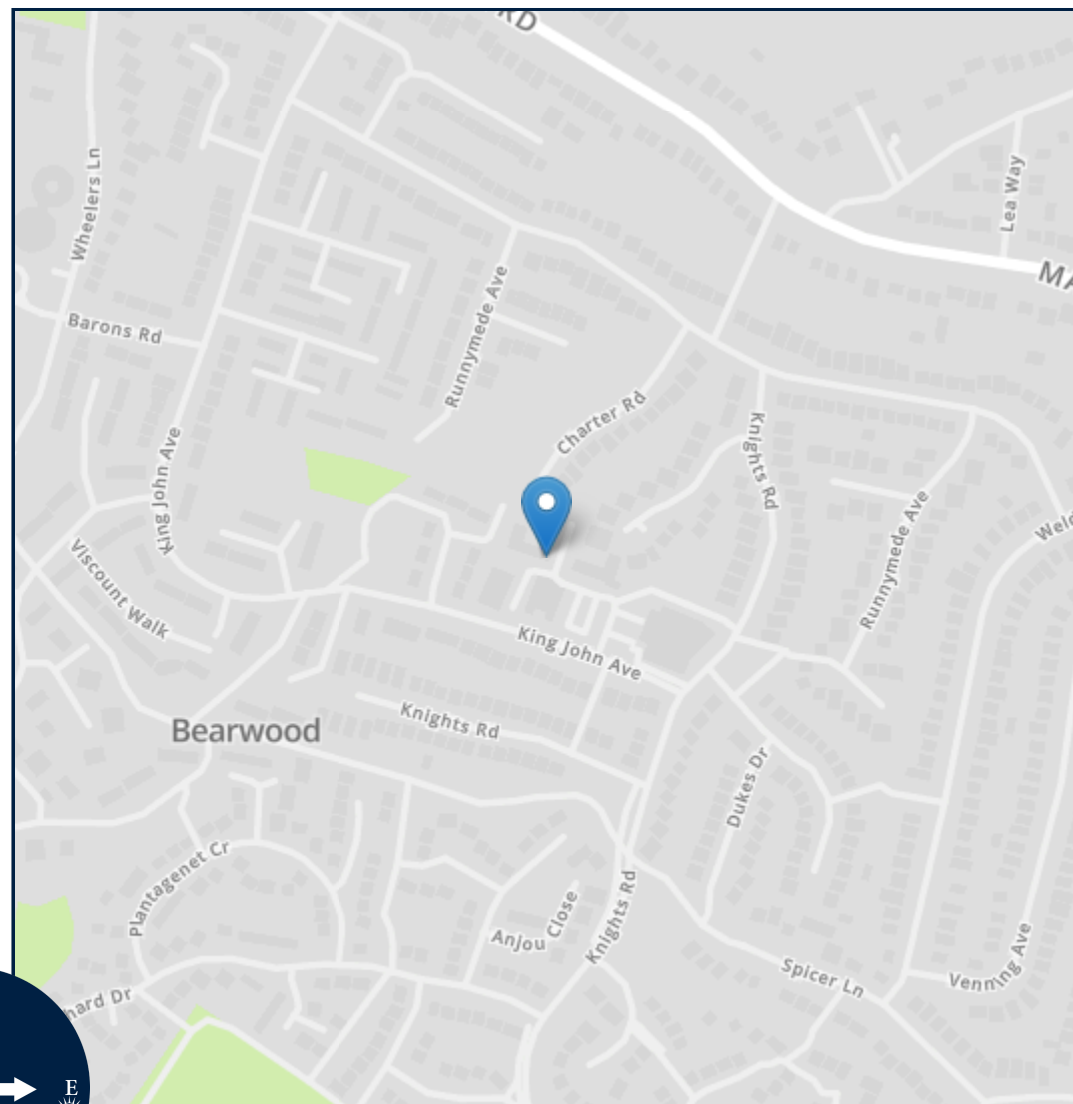
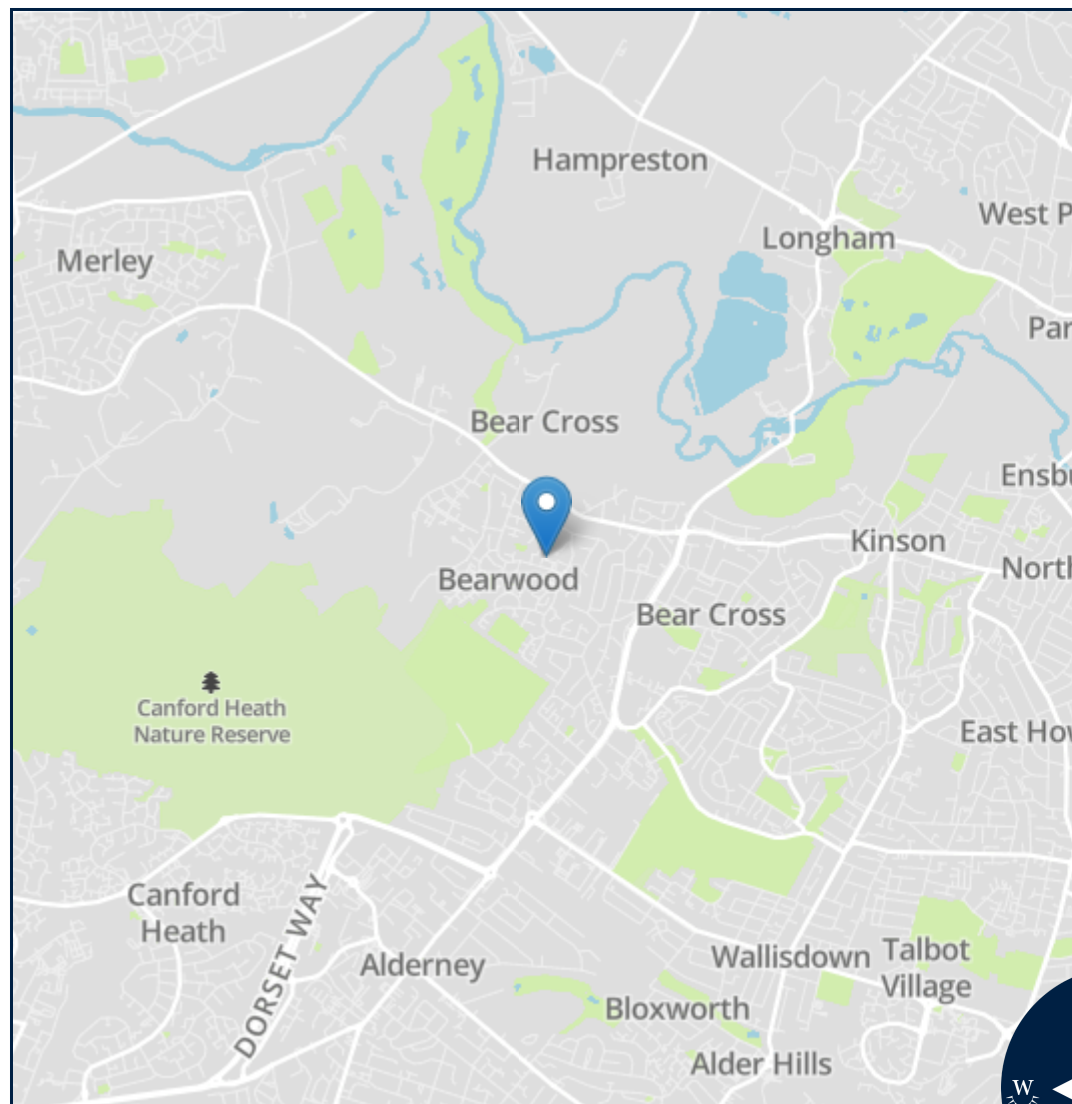
Local Authority: BPC Council

Council Tax Band:B

GROUND FLOOR
447 sq.ft. (41.5 sq.m.) approx.



TOTAL FLOOR AREA : 447 sq.ft. (41.5 sq.m.) approx.
Measurements are approximate. Not to scale. Illustrative purposes only
Made with Metropix ©2024



Energy Efficiency Rating	
Current	Potential
Very energy efficient - lower running costs	
(92+) A	88
(81-91) B	
(69-80) C	
(55-68) D	
(39-54) E	
(21-38) F	
(1-20) G	
Not energy efficient - higher running costs	
66	
England, Scotland & Wales	
EU Directive 2002/91/EC	



Important notice: Fisks Estate Agents, their clients and any joint agents give notice that 1: They are not authorised to make or give any representations or warranties in relation to the property either here or elsewhere, either on their own behalf or on behalf of their client or otherwise. They assume no responsibility for any statement that may be made in these particulars. These particulars do not form part of any offer or contract and must not be relied upon as statements or representations of fact. 2: Any areas, measurements or distances are approximate. The text, photographs and plans are for guidance only and are not necessarily comprehensive. It should not be assumed that the property has all necessary planning, building regulation or other consents and Fisks Estate Agents have not tested any services, equipment or facilities. Purchasers must satisfy themselves by inspection or otherwise.



12 East Street, Wimborne,
Dorset, BH21 1DS
www.fisksestateagents.co.uk
01202 880000