

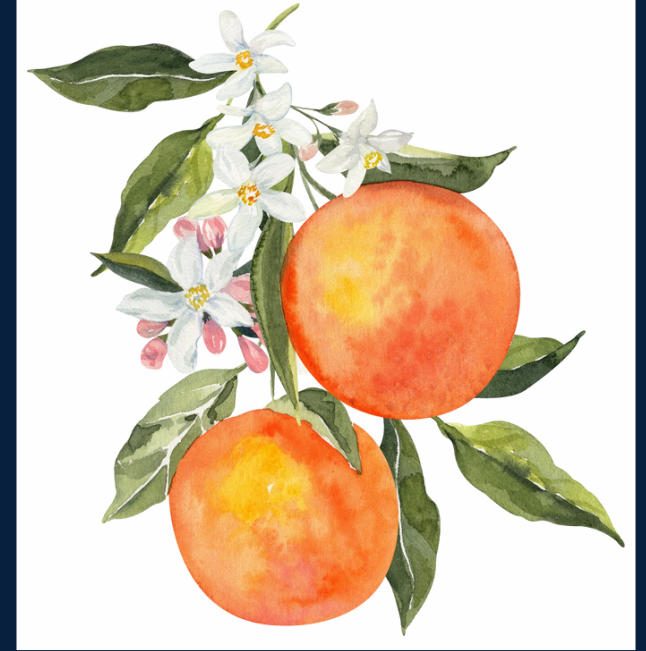


*Croft Rose*

KIRKBY LONSDALE



## 23 CROFT CLOSE



Nestled in the charming town of Kirkby Lonsdale, this elegant first-floor apartment on Croft Close offers a perfect blend of modern living and picturesque surroundings. Boasting two generously sized double bedrooms, this property is ideal for couples, small families, or professionals seeking a tranquil yet convenient lifestyle.

Step into a spacious and inviting living room, seamlessly integrated with an open-plan kitchen. The contemporary kitchen is well-appointed with modern appliances and ample storage, making it perfect for both everyday living and entertaining guests. The living area, with its large windows, allows for an abundance of natural light and offers breathtaking views of the surrounding countryside. The family bathroom is stylishly designed, featuring high-quality fixtures and fittings, providing a relaxing retreat at the end of the day.





*Take a closer look...*



Property Type:

*Apartment*

Square Footage:

*607 sqft*

Council Tax Band:

*B*

EPC Rating:

*tbc*

Tenure:

*Leasehold*

# Why Kirkby Lonsdale?



NESTLED IN THE PICTURESQUE LUNE VALLEY, KIRKBY LONSDALE IS A CHARMING MARKET TOWN IN CARNFORTH THAT OFFERS A BLEND OF NATURAL BEAUTY, HISTORICAL CHARM, AND MODERN AMENITIES. POSITIONED BETWEEN THE LAKE DISTRICT AND THE YORKSHIRE DALES, IT IS IDEAL FOR NATURE ENTHUSIASTS, HISTORY BUFFS, AND THOSE SEEKING A VIBRANT COMMUNITY. THE TOWN FEATURES STUNNING SCENERY, NOTABLY THE ICONIC VIEW OF THE RIVER LUNE FROM RUSKIN'S VIEW, AND OFFERS NUMEROUS OUTDOOR ACTIVITIES LIKE HIKING, CYCLING, AND FISHING. RICH IN HISTORY, IT BOASTS THE 12TH-CENTURY ST. MARY'S CHURCH AND WELL-PRESERVED GEORGIAN AND VICTORIAN ARCHITECTURE. DESPITE ITS QUIANT SIZE, KIRKBY LONSDALE HAS A BUSTLING TOWN CENTRE WITH INDEPENDENT SHOPS, EATERIES, AND GALLERIES. THE COMMUNITY IS VIBRANT, WITH A WEEKLY MARKET, ANNUAL EVENTS LIKE THE BEER AND MUSIC FESTIVAL, AND MANY CLUBS AND SOCIETIES. EXCELLENT LOCAL SCHOOLS, INCLUDING QUEEN ELIZABETH SCHOOL, ACCESSIBLE HEALTHCARE SERVICES, AND GOOD TRANSPORT LINKS FURTHER ENHANCE ITS APPEAL, MAKING KIRKBY LONSDALE A DELIGHTFUL PLACE TO CALL HOME.

Kirkby Lonsdale Town







PARKING



GARDEN



Residents of Croft Close will enjoy the convenience of being close to local amenities, while also having the advantage of stunning vistas that make this property truly unique.

Whether you are enjoying your morning coffee or winding down in the evening, the scenic views from this apartment will never cease to amaze. Don't miss the opportunity to make this beautiful apartment your new home.

This property is subject to a local occupancy clause. Please contact the office for further information and to obtain the relevant forms.

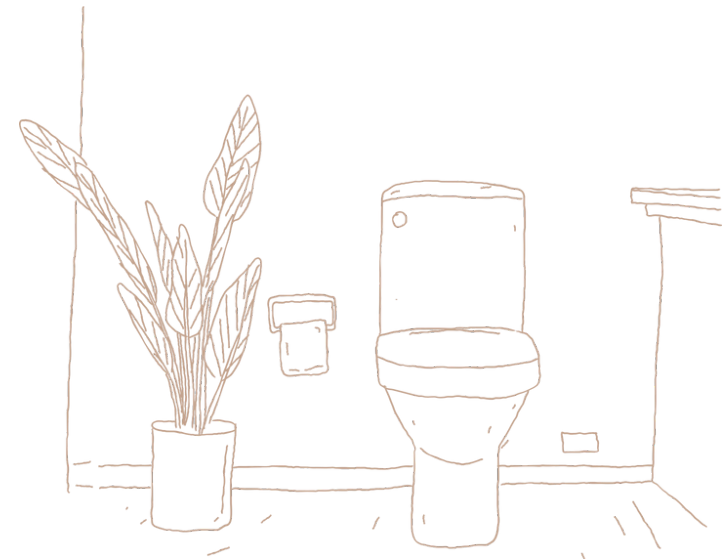


Zzz... 9000









# WHERE CAN I FIND...



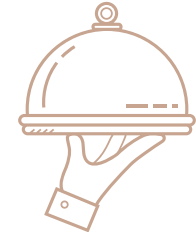
The Closest School?

Queen Elizabeth School is just 0.2 miles away.



The Local Shop?

Booths is just 0.2 miles from your doorstep. Great for those essentials!



A Delicious Meal?

Kings Arms Hotel and it's fabulous menu awaits you, only 0.2 miles away.



Somewhere Nice to Walk the Dog?

A Breathtaking walk round Devils Bridge can be accessed 0.7 miles from your home just over a 10 min walk.



A Refreshing Pint?

The Royal Barn is just 0.2 miles away, you could be back home in under 5 minutes!

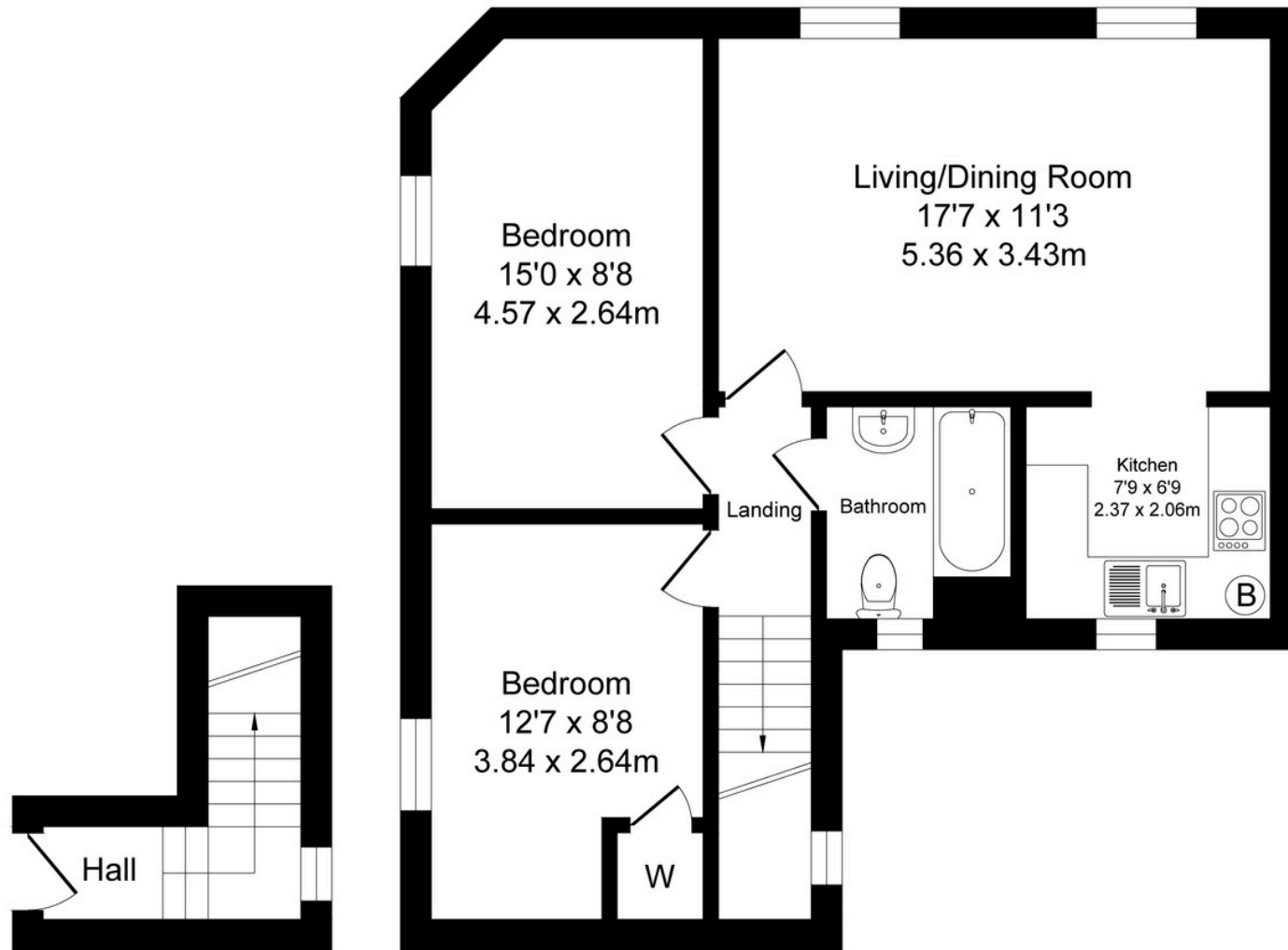


Your Local Property Experts?

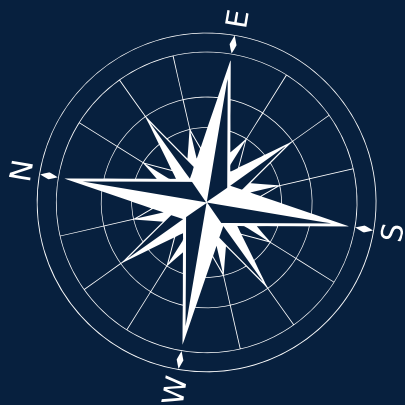
Our Lovely Lune Valley Team are available via Email or phone 7 Days!







**lunevalley**  
ESTATES.



**Total Floor Area: 607 sq.ft (56.4 sq.m) approx.**

Whilst every attempt has been made to ensure the accuracy of this floorplan, measurements of doors, windows, rooms and any other items are approximate and no responsibility is taken for any error, omission or mis-statement. This plan is for illustrative purposes only and should be used as such by any prospective purchaser. The services, systems and appliances shown have not been tested and no guarantee as to their operability or efficiency can be given.





23, Croft Close, Kirkby Lonsdale, Carnforth LA6 2FH

 [///clubs.pioneered.winded](https://clubs.pioneered.winded)



015242 56625 | [team@lunevalleyestates.com](mailto:team@lunevalleyestates.com) | [www.lunevalleyestates.com](http://www.lunevalleyestates.com)