



## Ladbroke Drive, Potters Bar, Hertfordshire, EN6 1QP

**£975,000**

- SUPERB FAMILY HOME
- BI-FOLDING DOORS TO SOUTH FACING GARDEN
- LOFT CONVERSION WITH MASTER BEDROOM / EN-SUITE
- EXCELLENT DECORATIVE ORDER THROUGHOUT
- LOUNGE KITCHEN DINER WITH UNDER FLOOR HEATING
- SOLAR PANELS
- CLOSE TO SHOPS / RESTAURANTS / TRAIN STATION
- SOUTH FACING GARDEN WITH SIDE STORAGE

108, High Street, Potters Bar, EN6 5AT

01707 245 555

[www.home-counties.com](http://www.home-counties.com)

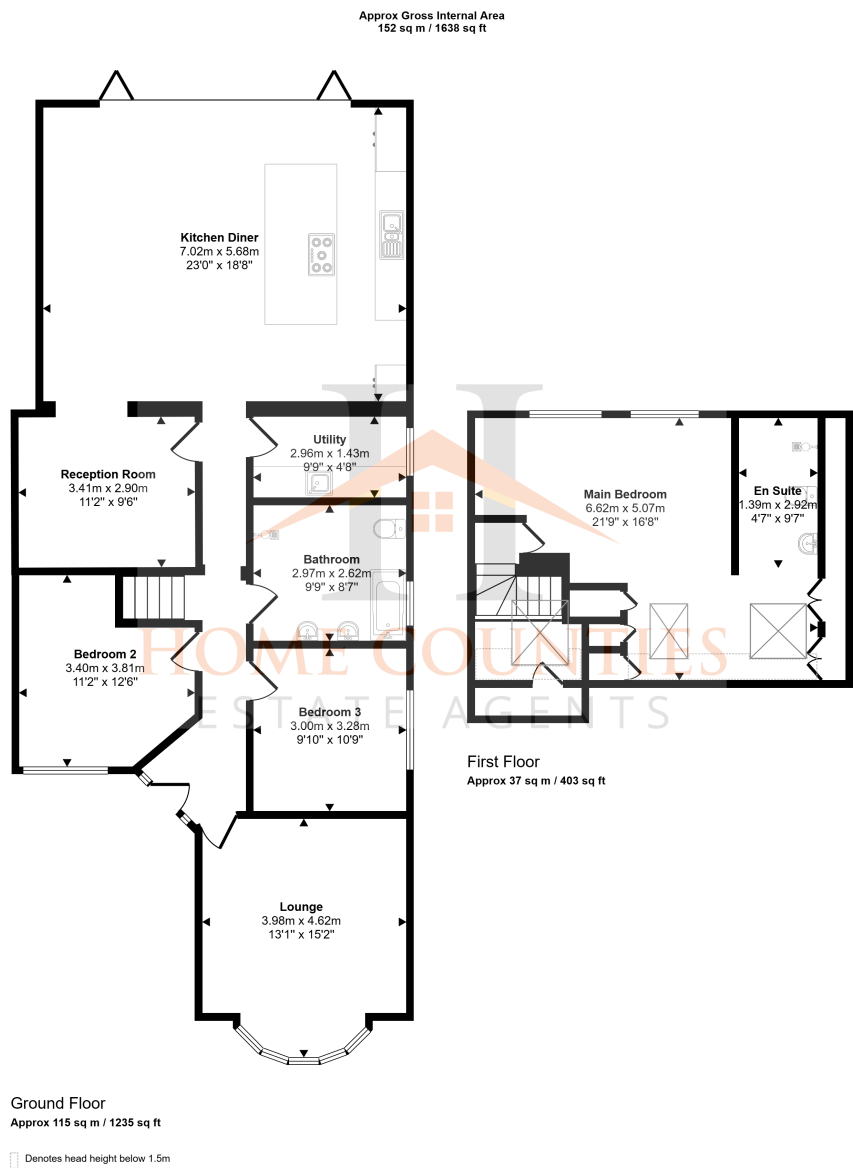
# Ladbroke Drive, Potters Bar, Hertfordshire, . EN6 1QP

## £975,000 Freehold

A beautifully extended 3/4 bedroom bungalow located on a desirable, tree-lined road near Darkes Lane and Potters Bar Station.

Immaculately presented throughout, it features a spacious open-plan kitchen/living/dining area with bi-fold doors opening to a private, south-facing garden. Additional highlights include a utility room, flexible second reception/fourth bedroom, stylish bathrooms, and a loft-level principal suite with en-suite and built-in wardrobes.

Outside offers ample parking, a timber garage, storage lean-to, and a large garden with patio, lawn, deck, and log cabin.



This floorplan is only for illustrative purposes and is not to scale. Measurements of rooms, doors, windows, and any items are approximate and no responsibility is taken for any error, omission or mis-statement. Icons of items such as bathroom suites are representations only and may not look like the real items. Made with Made Snappy 360.

