

Hartlake Close

Glastonbury, BA6 9GF

COOPER
AND
TANNER



£145,000 Leasehold

3 1 2 EPC C

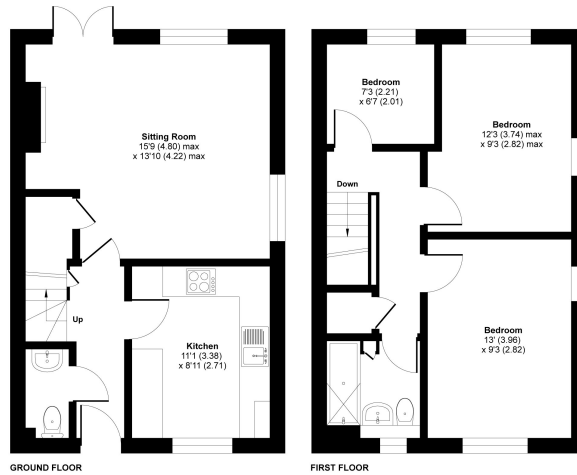
Description

An exceptionally rare opportunity to acquire a 50% share of this immaculately presented three-bedroom semi-detached home. Tucked away in a secluded position, the property offers contemporary accommodation with several rooms enjoying westerly views over the surrounding green spaces. The ground floor includes a well-appointed kitchen with breakfast bar, a cloakroom/WC, and a spacious lounge/diner with French doors to the garden. Upstairs are three bedrooms and a beautifully finished family bathroom. A private, low maintenance garden benefits from new fencing and the recent addition a seating area in one corner.

Hartlake Close, Glastonbury, BA6

Approximate Area = 800 sq ft / 74.3 sq m

For identification only - Not to scale



① Floor plan produced in accordance with RICS Property Measurement 2nd Edition, incorporating International Property Measurement Standards (IPMS Residential). Produced for Cooper and Tanner. REF: 1406025. © nrichcom 2025.



Features

- Perfect for buyers seeking an affordable start to home ownership
- £360.83 rent PCM
- Leasehold - 82 years remaining
- 50% Shared Ownership With Higher Shares Available up to 100%
- Secluded location, set away from busy roads
- Immaculately presented and tasteful decor throughout
- Allocated parking

Local Information

- Council Tax Band C
- Tenure Leasehold
- EPC Rating C

GLASTONBURY OFFICE

Telephone 01458 831077

41, High Street, Glastonbury, Somerset BA6 9DS

glastonbury@cooperandtanner.co.uk

**COOPER
AND
TANNER**

Important Notice: These particulars are set out as a general outline only for the guidance of intended purchasers and do not constitute, nor constitute part of, an offer or contract. All descriptions, dimensions, reference to condition and necessary permissions for use and occupation, warranties and other details are given without responsibility and any intending purchasers should not rely on the same as statements or representations of fact but must satisfy themselves by inspection or otherwise as to the correctness of each of them.

