

6 Astrid Road

WALMER, Deal
CT14 9JZ

£290,000 FREEHOLD

Draft Details...Price Range £290,000 - £300,000 | Chain Free | Off Street Parking | Refurbished Three Bedroom Semi Detached House | Popular Residential Location | Burnap + Abel are delighted to offer onto the market this fabulous three bedroom semi detached family home situated in the highly sought after Astrid Road, Walmer, Deal. The property has recently been updated and the accommodation boasts a spacious lounge, brand new kitchen, three bedrooms and a modern bathroom. Additional benefits include off street parking, sunny rear garden with side access, double glazing, gas central heating (vendors have informed us that a gas safety check has been done in 2022) and NO ONWARD CHAIN. The seaside town of Deal has an excellent range of independent shops, weekly markets, two castles, wonderful architecture and a quarter mile long pier affording views of the historic seafront. Deal came first in the Daily Telegraph's 10 top spots to lay your beach towel and was praised for being 'the genuine Georgian article'. For your chance to view call sole agent Burnap + Abel on 01304 279107.



Entrance Hall

Carpeted floor, radiator, carpeted stairs to the first floor and doors leading to;

Lounge

4.53m x 4.21m (14' 10" x 13' 10") A spacious light and airy lounge with carpeted floor, radiator and double glazed window.

Kitchen

5.54m x 2.37m (18' 2" x 7' 9") Newly fitted kitchen with a mix of wall and base units, space for fridge freezer, washing machine, integrated oven/gas hob, under stair storage cupboard, radiator, wall mounted boiler (vendors have a gas safety certificate for 2022), double glazed windows and door to the garden.

First Floor Landing

Carpeted stairs, double glazed window, carpeted landing, cupboard space, loft hatch and doors leading to;

Bedroom One

3.33m x 3.17m (10'11" x 10' 5") Double bedroom with carpeted floor, radiator and double glazed window overlooking the garden.

Bedroom Two

3.18m x 2.75m (10' 5" x 9') Double bedroom with carpeted floor, radiator and double glazed window.

Bedroom Three

2.39m x 2.29m (7' 10" x 7' 6") Carpeted floor, radiator and double glazed window.

Bathroom

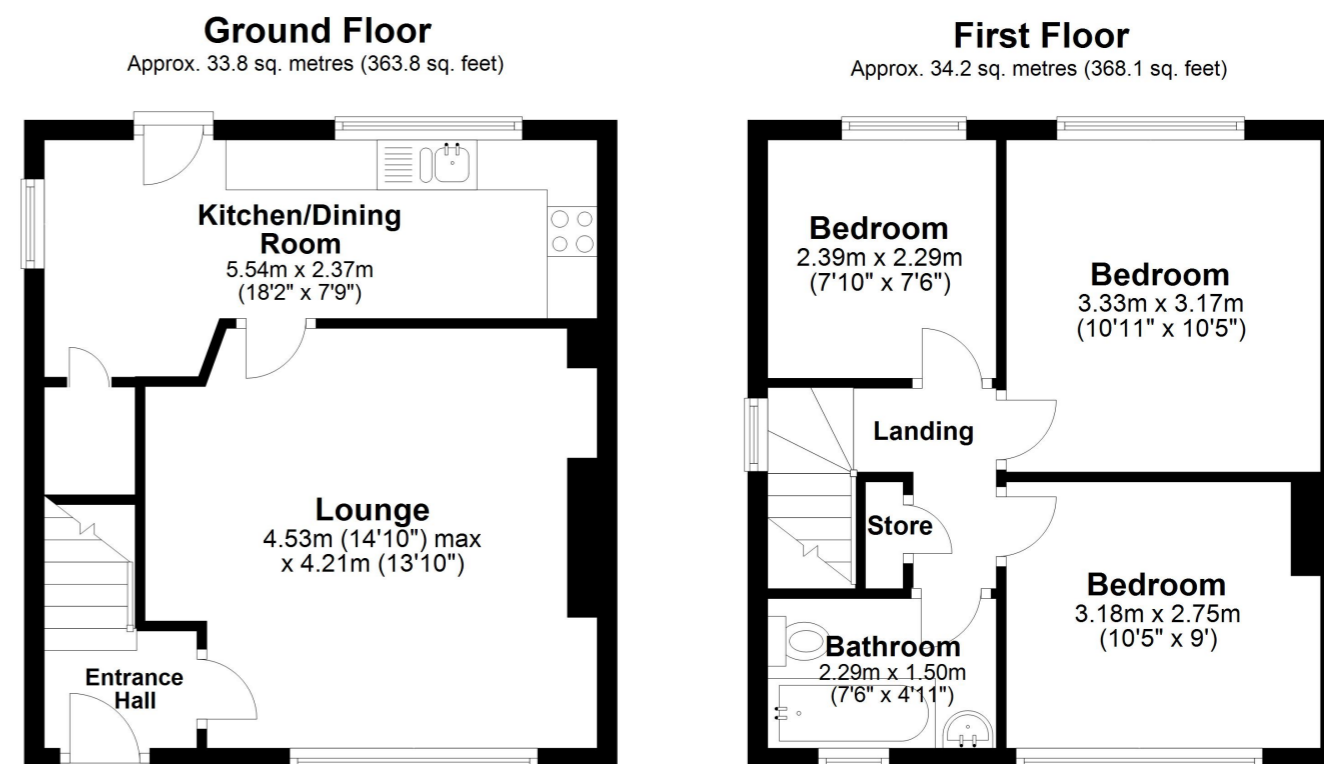
2.29m x 1.50m (7' 6" x 4' 11") Modern style bathroom with a low level W.C., bath with overhead shower, wash hand basin, radiator and a frosted double glazed window.

Garden

A good size sunny rear garden with side access. Mainly laid to lawn.

Area Information

Deal is a town situated in Kent, which lies on the English Channel, eight miles north-east of Dover and eight miles south of Ramsgate. This former fishing and mining town became a 'limb port' of the Cinque Ports in 1278 and grew into the busiest port in England. In 1968, "Middle Street" was the first Conservation Area in Kent, its quaint streets and houses a reminder of its history along with many ancient buildings and monuments including, most notably, Deal and Walmer Castles. Today it is a seaside resort with its award-winning High Street, high-speed train Links to St Pancras and independent shops. An array of cafes and pubs sit along the picturesque seafront that is home to a sweeping pier.



Total area: approx. 68.0 sq. metres (731.8 sq. feet)

Whilst every attempt has been made to ensure the accuracy of the floor plan contained here, measurements of doors, windows, rooms and any other items are approximate and no responsibility is taken for any error, omission or mis-statement. This plan is for illustrative purposes only and should be used as such by any prospective purchaser.

Plan produced using PlanUp.

