



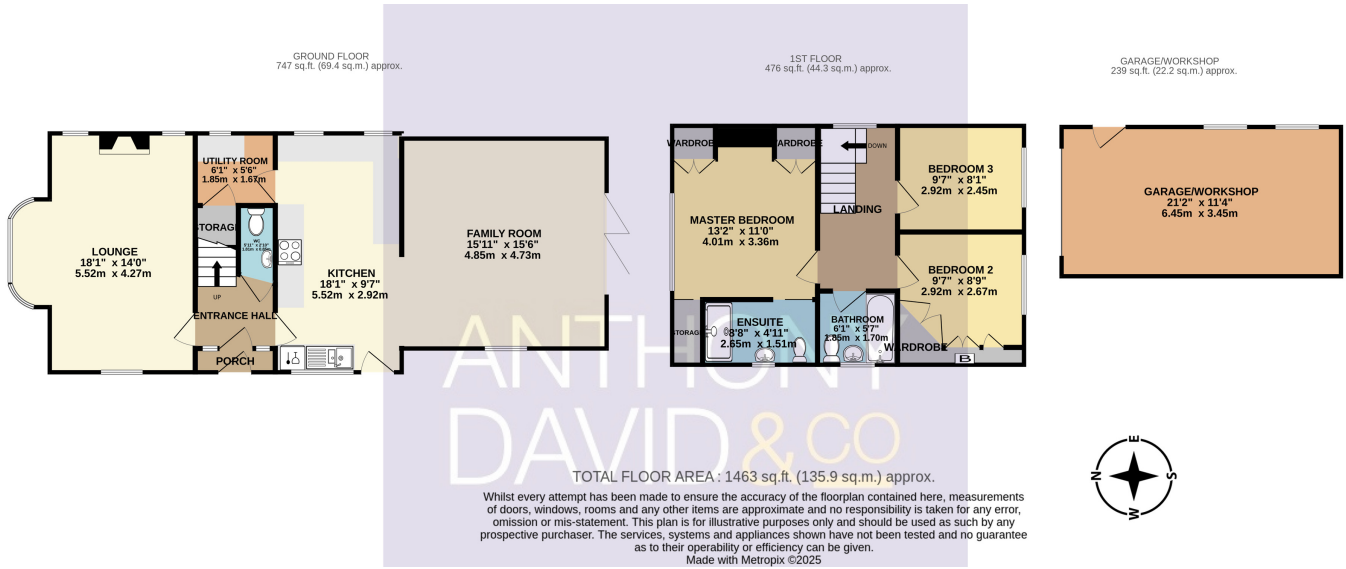
3 Haynes Avenue, Poole, Dorset BH15 2ED

£459,950 Freehold

A superb three double bedroom detached house conveniently situated on the fringes of Oakdale and Poole a short distance away from local shops, bus routes, schools and amenities. Poole Town centre with its array of shopping facilities and central transport links is also close to hand. This sizable home would benefit from some cosmetic updating and has potential to become a forever family home. Offering over 1460 sq ft (including outbuilding) the accommodation comprises: lounge with bay window, fitted kitchen, utility room, family room with bi-folds, downstairs cloakroom, en-suite shower room and family bathroom. Externally the property boasts a beautifully maintained South facing garden with sun patio ideal for al fresco dining in the summer months and lawned area leading to a detached garage/workshop with power and light. To the front the ample driveway provides off road parking. Further features of this much loved home include: feature fireplace and parquet flooring to lounge, feature port hole and stain glass windows, fitted wardrobes to bedrooms one and two, gas central heating and UPVC double glazing. Nearby Schools - Stanley Green Infants, Longfleet Primary, Oakdale Juniors, Longfleet Primary, Poole High and St Edwards RC/CoE Secondary.

info@anthonydavid.co.uk
www.anthonydavid.co.uk
01202 677444

**ANTHONY
DAVID & CO**



- Entrance Hall Doors to
- Lounge 18' 1" x 14' 0" (5.51m x 4.27m)
- Kitchen 18' 1" x 9' 7" (5.51m x 2.92m)
- Utility Room 6' 1" x 5' 6" (1.85m x 1.68m)
- Family Room 15' 11" x 15' 6" (4.85m x 4.72m)
- Downstairs Cloakroom 5' 11" x 2' 10" (1.80m x 0.86m)
- Landing Doors to
- Master Bedroom 13' 2" x 11' 0" (4.01m x 3.35m)
- En-Suite Shower 8' 8" x 4' 11" (2.64m x 1.50m)
- Bedroom Two 9' 7" x 8' 9" (2.92m x 2.67m)
- Bedroom Three 9' 7" x 8' 1" (2.92m x 2.46m)
- Bathroom 6' 1" x 5' 7" (1.85m x 1.70m)
- Garage 21' 2" x 11' 4" (6.45m x 3.45m)
- Garden South facing
- Driveway Off road parking x 3
- Council Tax Band D

