



2 Russell Place, Sutton At Hone, Dartford, Kent, DA4 9EB
£500,000 Freehold



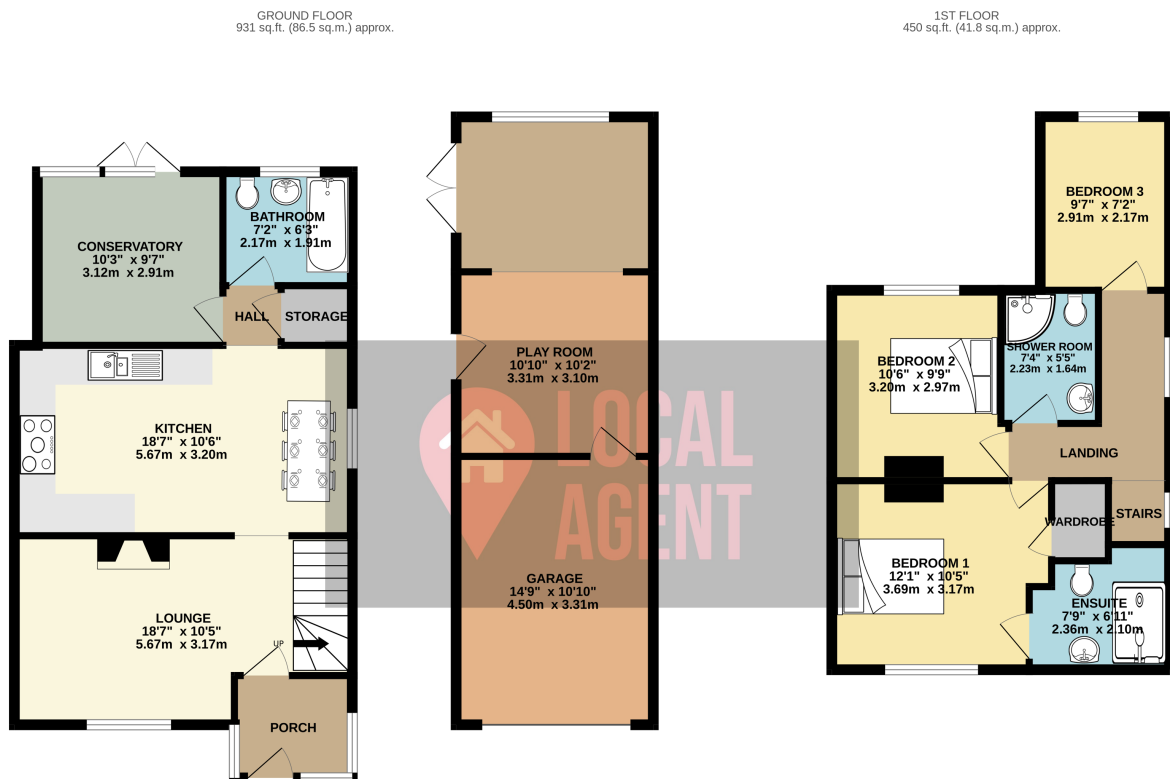
Description

Situated in a semi rural location backing on to fields, this well presented extended Three Bedroom Semi Detached House has an Ensuite to the main bedroom. Spacious Kitchen Diner and two further reception rooms. The property is on a wide plot with a large garage which has been extended to the rear for a games room. This side of the property is offering huge potential for a large extension (subject to planning).

Perfectly located for easy access to Sutton at Hone village, Farningham and Eynsford villages, this has a semi rural feel to it. It has excellent access to motorway networks and railway links, together with Ebbsfleet International station being 6.6 miles away. The M25 at Junction 3 offers access to Gatwick, Stansted and Heathrow. M20 provides convenient access to London and the Kent coast.

The area boasts for its excellent range of schools including Wilmington & Dartford Grammars and The Leigh Academy. Sutton-at-Hone Primary School which is currently rated at good but aspiring to be outstanding and short distance away. Locally there are many excellent leisure facilities including Bluewater shopping centre, The London Golf Club and Brands Hatch motor racing circuit. You will also find and a range of boutique shops, country pubs and restaurants in the surrounding villages.

Farningham Road station 0.5 miles Swanley 3.4 miles, Dartford 4 miles, Ebbsfleet International station 6.5 miles, (All distances are approximate)



TOTAL FLOOR AREA: 1381 sq.ft. (128.3 sq.m.) approx.
Whilst every attempt has been made to ensure the accuracy of the floorplan contained here, measurements of doors, windows, rooms and any other items are approximate and no responsibility is taken for any error.