



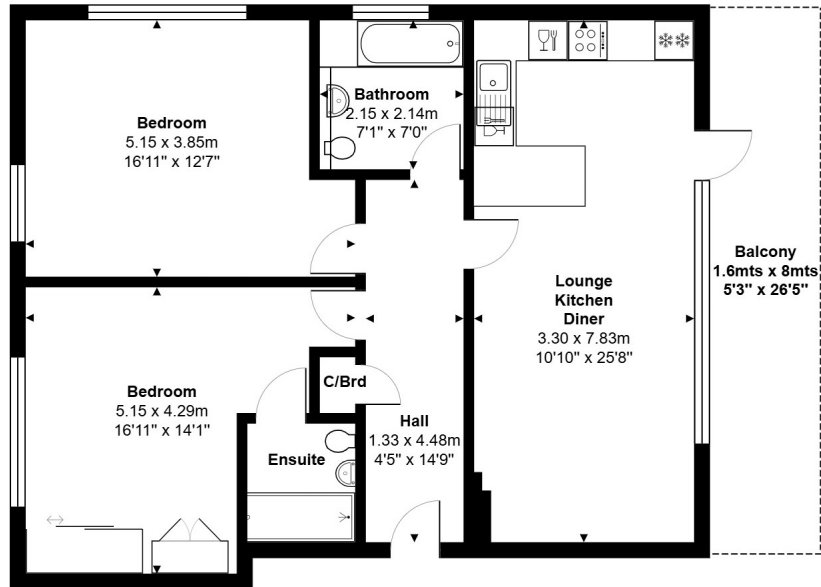
## **Thames Street, Staines-upon-Thames, Surrey, TW18 4BF**

STUNNING TWO BEDROOM, TWO BATHROOM RIVERSIDE PENTHOUSE SITUATED IN THIS SOUGHT AFTER DEVELOPMENT IDEALLY POSITIONED IN THE HEART OF STAINES TOWN CENTRE, CONVENIENTLY LOCATED FOR EASY ACCESS TO HIGH STREET, MAINLINE TRAIN STATION, LOCAL MOTORWAY NETWORKS & HEATHROW AIRPORT. The property benefits from a spacious kitchen/diner open to lounge with bi-folding doors to private balcony, two double bedrooms (en-suite to Bed 1), further luxury bathroom suite and secure underground gated parking. No Onward Chain. Viewings Highly Recommended!

## ROOM DESCRIPTIONS

---

# FLOORPLAN



**Fifth Floor**

Total Area: 79.9 m<sup>2</sup> ... 860 ft<sup>2</sup>

All measurements are approximate and for display purposes only.

127a, High Street, Staines-upon-Thames, TW18 4PD

01784 451458

staines@gregory-brown.co.uk